

Rose Cottage

Yanley Lane, Long Ashton

Guide Price £325,000

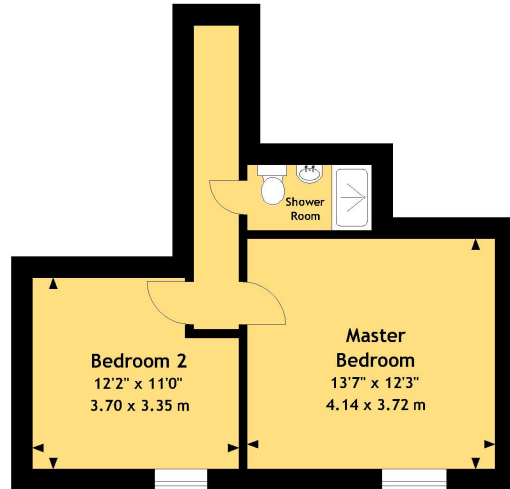
- Detached Cottage
- Period Features
- Two Double Bedrooms
- Two Generous Reception Rooms
- Modern Ground Floor Bathroom
- Modern First Floor Shower Room
- Recently Fitted Kitchen
- Private Courtyard Garden

DESCRIPTION

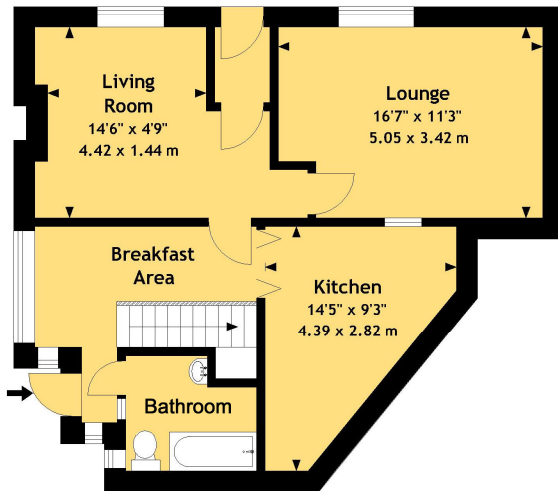
Dating back to the early 1800s this charming detached two-bedroom cottage is offered to the market with no onward chain. The property benefits from gas central heating and up to date electrics whilst offering period features such as picture rails and sash windows. The accommodation is deceptively spacious with the ground floor comprising two generous reception rooms, one with built-in storage and one with window seat. The newly fitted kitchen includes a four-ring gas hob with space and plumbing for fridge/freezer, washing machine and tumble dryer, with further storage cupboard leading to a glazed breakfast room with doors leading to south-facing courtyard. There is a modern bathroom suite to the ground floor consisting of shower over bath with shower unit and shower screen, basin and WC. The first floor offers two generous bedrooms, both with sash windows and dual glazing. Bedroom two also has a useful cupboard and loft hatch. A shower room serviced the bedrooms with WC, basin and shower cubicle with mains fed shower. The level south-facing rear courtyard is private and enclosed, is very low-maintenance with garden storage shed useful for garden furniture and bicycles with side access via a wooden gate.



Approx. Area 1045.95 Sq.Ft - 97.17 Sq.M



First Floor



Ground Floor

For illustrative purposes only. Not to scale.

Whilst every attempt has been made to ensure accuracy of the floor plan all measurements are approximate and no responsibility is taken for any error, omission or measurement.
Floor plan produced by Westcountry FPC



Clifton Branch: 01179 744 766
Long Ashton Branch: 01275 393 956

