

## Northleaze, Long Ashton Asking Price £275,000

- Spacious Three Bedroom First Floor Flat
- NO ONWARD CHAIN
- Ideal for First Time Buyers / Investors
- Fitted Kitchen
- Open Plan Living/Dining Room
- Three Double Bedrooms
- Bathroom with Separate WC
- South Facing Outdoor Courtyard Space
- Integrated Outside Storage Shed

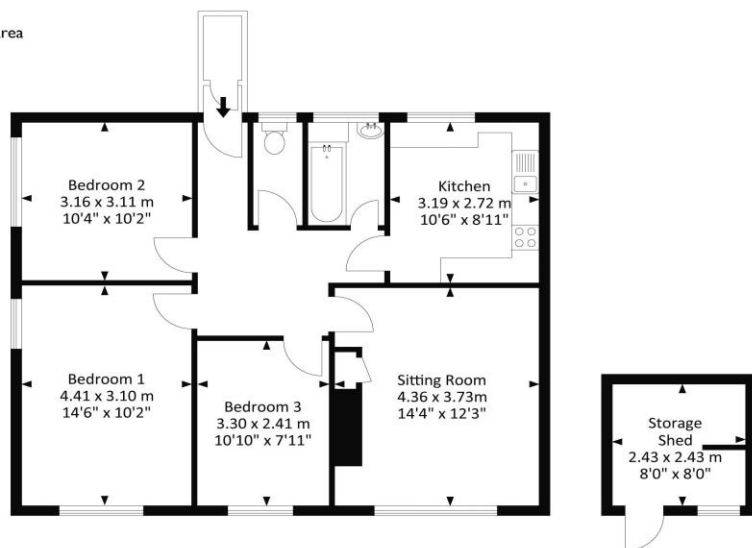
### SUMMARY

This generously sized three bedroom flat on the first floor presents an excellent opportunity for first time buyers or investors alike. The property features a well-equipped kitchen with a range of base and wall units, an integrated four-ring hob and oven, and space for a washing machine and fridge/freezer. The bright and spacious living/dining room enjoys far reaching, south facing views towards Dundry. There are three double bedrooms, a family bathroom with a bath and mains-fed shower, a sink and a separate WC. Outside you'll find a south facing courtyard, perfect for al fresco dining, as well as an integral storage cupboard.



## Northleaze, Long Ashton BS41 9HS

Approx. Gross Internal Area  
841.9 Sq.Ft - 78.2 Sq.M  
(Includes Storage Shed)



For illustrative purposes only. Not to scale.  
Whilst every attempt has been made to ensure accuracy of the floor plan all measurements are approximate and no responsibility is taken for any error, omission or measurement.



**Tenure**  
Leasehold

**EPC Rating**  
B

**Council Tax Band**  
C

**Services Mains Gas, Water and Electric**

Clifton : 01179 744 766  
Long Ashton : 01275 393 956  
Southville : 01174 523 700

