

Legion View, Long Ashton

Asking Price £540,000

- Modern Three Bedroom Townhouse
- South Facing Rear Garden
- Immaculately Presented Throughout
- Open Plan Kitchen / Dining / Living Room
- Main Bedroom Suite with Walk In Wardrobe and En-Suite
- Two Further Bedrooms
- Off Street Parking for Two Vehicles

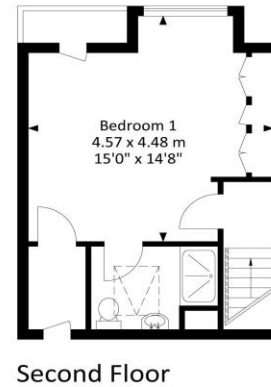
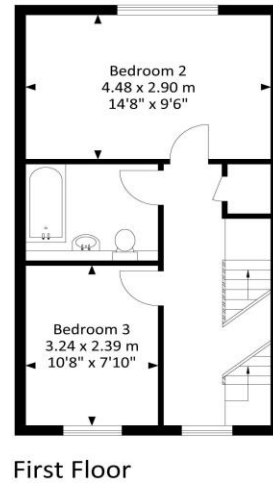
SUMMARY

This immaculately presented three-bedroom modern townhouse is set within a private, elevated development, enjoying stunning south-facing views. The ground floor enters into a spacious hallway with under-stair storage and a convenient downstairs WC, as well as a stylish open-plan kitchen, dining, and living area, featuring Karndean flooring throughout and double doors opening onto the rear garden. The contemporary kitchen includes a range of wall and base units, a Worcester boiler, a built-in Bosch induction hob, gas oven and extractor fan, and integrated appliances such as a fridge/freezer, dishwasher, and washing machine. Upstairs on the first floor are two generous bedrooms, a modern family bathroom with a floating sink, WC, and bath with mains-fed shower, plus a large storage cupboard with built-in shelving. On the top floor is the impressive main bedroom suite, complete with a walk-in wardrobe and a stylish en-suite bathroom featuring a walk-in shower, floating sink, and WC. This room also takes advantage of the property's beautiful south-facing outlook. The professionally landscaped rear garden offers a level lawn and patio, perfect for al-fresco dining. Additional features include two allocated off-street parking spaces, five solar panels, and access to secure communal bike storage.



Legion View, Long Ashton BS41 9FQ

Approx. Gross Internal Area
1135.0 Sq.Ft - 105.40 Sq.M



For illustrative purposes only. Not to scale.
Whilst every attempt has been made to ensure
accuracy of the floor plan all measurements are
approximate and no responsibility is taken for
any error, omission or measurement.



Tenure
Freehold

EPC Rating
B

Council Tax Band
D

Services Mains Gas, Electric and Water

Clifton : 01179 744 766
Long Ashton : 01275 393 956
Southville : 01174 523 700

