

## Perry Road, Long Ashton BS41 9FE

Asking Price £650,000

- Four Bedroom Detached Family Home
- Well Presented Throughout
- Open Plan Kitchen/Dining Space
- Large Reception Room
- Master Bedroom with En-Suite
- Three Further Bedrooms
- Utility Room and Downstairs WC
- Modern Family Bathroom
- Store Room / Garage

### SUMMARY

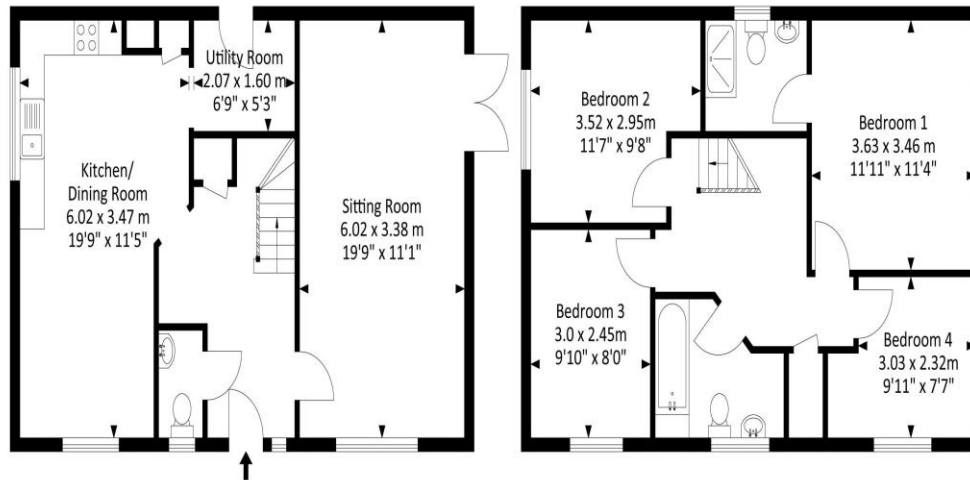
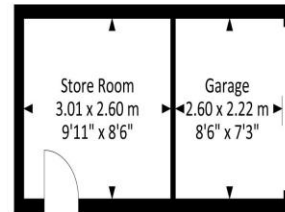
Situated on this popular development, this four-bedroom detached family home is well presented and has a light and airy feel throughout. Laid over two floors, the accommodation to the ground floor offers a large double aspect living room and contemporary modern open plan kitchen dining room, as well as a separate utility and downstairs WC. The kitchen comprises a range of base and wall units with worktop over, four ring induction hob, stainless steel sink. Integrated appliances include double oven and dishwasher. The utility room has space and plumbing for washing machine, dryer and fridge freezer.

To the first floor there are four generous sized bedrooms, along with a family bathroom. The main double bedroom features plenty of space for storage as well as an en-suite shower room with mains fed shower, WC and sink. The family bathroom offers a main fed shower over bath, sink and WC. Outside to the side is a fully enclosed garden which is mainly laid to lawn with a large decking area and small summer house. The current vendors have split the garage to create a useful storeroom which could easily be used as a home office. There is off street parking in front of the garage.



# Perry Road, Long Ashton BS41 9FE

Approx. Gross Internal Area  
1336.3 Sq.Ft - 124.1 Sq.M  
(Total Area Includes Garage/Store)



Ground Floor

First Floor

For illustrative purposes only. Not to scale.  
Whilst every attempt has been made to ensure accuracy of the floor plan all measurements are approximate and no responsibility is taken for any error, omission or measurement.

**Tenure**  
Freehold

**EPC Rating**  
C

**Council Tax Band**  
E

**Services Mains gas, water and electric.**

Clifton : 01179 744 766  
Long Ashton : 01275 393 956  
Southville : 01174 523 700

