

Keedwell Hill, Long Ashton

Asking Price £350,000

- Two Bedroom Terraced Home
- NO ONWARD CHAIN
- Living Room with Double Doors to Rear Garden
- Fitted Modern Kitchen
- Two Bedrooms
- Family Bathroom
- South Facing Courtyard Garden
- Off Street Parking for Multiple Vehicles
- Southerly Facing Views

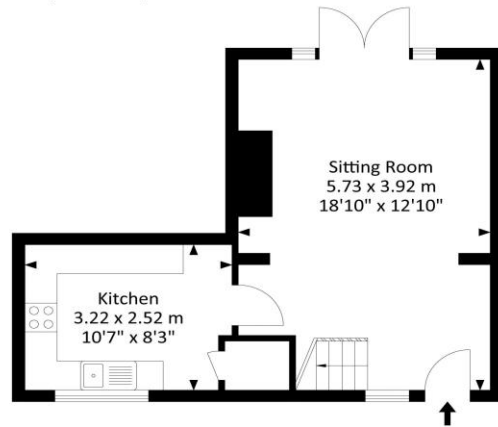
SUMMARY

This two-bedroom terraced home offers well-presented living space with southerly facing views. Entering into the spacious open-plan living/dining room you'll find an electric fire and double doors opening out to the rear garden. Adjacent is a fitted kitchen featuring a range of base and wall units, a convenient breakfast bar, an integrated Bosch oven with a Logik electric hob, and space for a washing machine and fridge/freezer. Upstairs, the property boasts a generously sized double bedroom and further single bedroom, along with a family bathroom fitted with a bath and overhead shower, WC, and sink. A built-in hallway cupboard provides useful additional storage. Outside, the enclosed courtyard garden to the rear offers a private space ideal for entertaining. At the front, a driveway provides off-street parking for multiple vehicles.

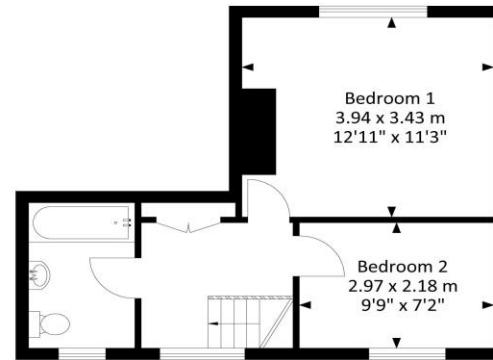


Keedwell Hill, Long Ashton, Bristol BS41 9DR

Approx. Gross Internal Area
662.20 Sq.Ft - 61.50 Sq.M



Ground Floor



First Floor

For illustrative purposes only. Not to scale.
Whilst every attempt has been made to ensure
accuracy of the floor plan all measurements are
approximate and no responsibility is taken for
any error, omission or measurement.

AlexanderMay
SALES & LETTINGS



Tenure
Freehold

EPC Rating
D

Council Tax Band
B

Services Mains Gas, Electric and Water

Clifton : 01179 744 766
Long Ashton : 01275 393 956
Southville : 01174 523 700

