

Fishers Mead, Long Ashton

Asking Price £465,000

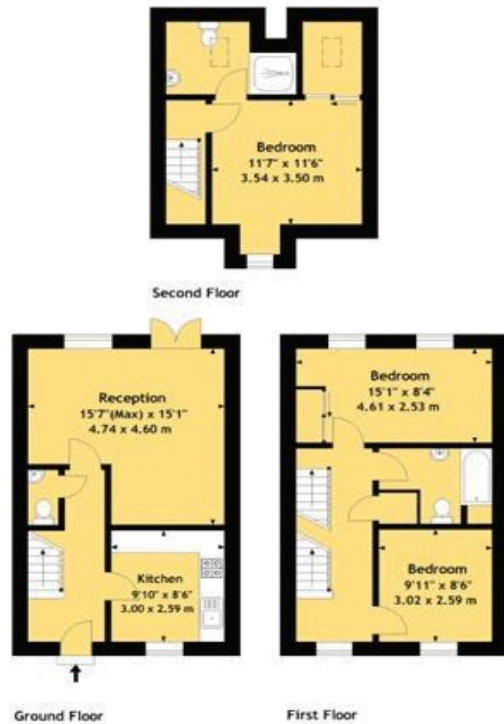
- NO ONWARD CHAIN
- Three Bedroom End-Terrace Townhouse
- Spacious Living/Dining Room
- Modern Kitchen
- Main Bedroom with En-Suite and Walk In Wardrobe
- Two Further Double Bedrooms
- Downstairs W/C and Family Bathroom
- Enclosed Rear Garden
- Single Garage

SUMMARY

A charming three-bedroom end-of-terrace townhouse, located in a highly desirable area and offered with no onward chain. Laid across three floors, the ground floor features a modern kitchen, an open-plan living/dining room with double doors leading to the rear garden, and a downstairs W/C. The kitchen is fitted with base units, a gas hob and oven, built-in fridge/freezer, and a dishwasher. On the first floor, you'll find two double bedrooms and a family bathroom with a W/C, sink, bath, and mains-fed shower. The top floor features the spacious main bedroom, complete with a walk-in wardrobe and en-suite shower room with a W/C, sink, and shower. To the rear of the property is a private garden with a patio area, lawn, and side access, along with a single garage.



Approx. Gross Area 1005.90 Sq.Ft - 93.50 Sq.M



For illustrative purposes only. Not to scale.

Whilst every attempt has been made to ensure accuracy of the floor plan all measurements are approximate and no responsibility is taken for any error, omission or measurement.
Floor Plan produced by Advantage Matters.



Tenure
Freehold

EPC Rating
C

Council Tax Band
D

Services Mains Gas, Water and Electric

Clifton : 01179 744 766
Long Ashton : 01275 393 956
Southville : 01174 523 700

