

Lovelinch Gardens, Long Ashton

Asking Price £325,000

- Two Storey Maisonette Apartment
- Located In the Heart Of Long Ashton Village
- Two Generous Double Bedrooms
- Large Living Room
- Dining Room / Third Bedroom
- Fitted Kitchen
- Family Bathroom & Shower Room
- No Onward Chain

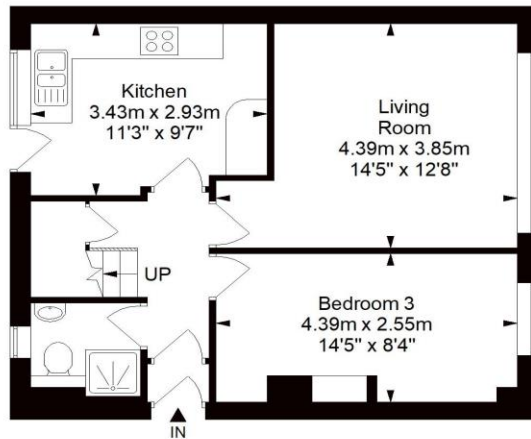
SUMMARY

This three bedroom maisonette is located in the heart of Long Ashton Village and comes with a single garage and off street parking. On the first floor, the property offers a spacious open-plan living area, a kitchen/diner, under stair storage and a bedroom/reception room. The kitchen is fitted with a range of base and wall units, breakfast bar, a four-ring gas hob and oven, as well as space for a fridge/freezer and washing machine. Additionally, there is a shower room on this floor, complete with a shower, W/C and sink. The second floor comprises of two double bedrooms, both with built-in storage, and a family bathroom featuring a bath with mains-fed shower, W/C and sink. A generous storage cupboard can also be found in the hallway. To the rear, the property offers a private courtyard garden, featuring both patio and decking areas, as well as rear access to the off street parking and single garage.

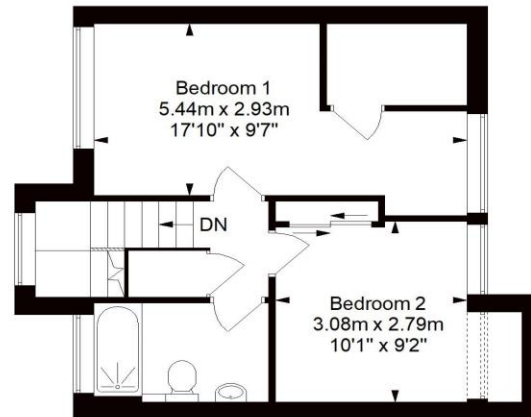


Lovelinch Gardens, Bristol, BS41 9AH

Approximate Gross Internal Area = 84.2 sq m/ 906.4 sq ft



Ground Floor



First Floor

This floor plan has been drawn using RICS guidelines (GIA)

Disclaimer : Please note this floor plan is for marketing purposes and is to be used as guide only.
All Efforts have been made to ensure its accuracy at time of print



Tenure
Leasehold

EPC Rating
D

Council Tax Band
B

Services Mains Gas, Electric and Water

Clifton : 01179 744 766
Long Ashton : 01275 393 956
Southville : 01174 523 700

