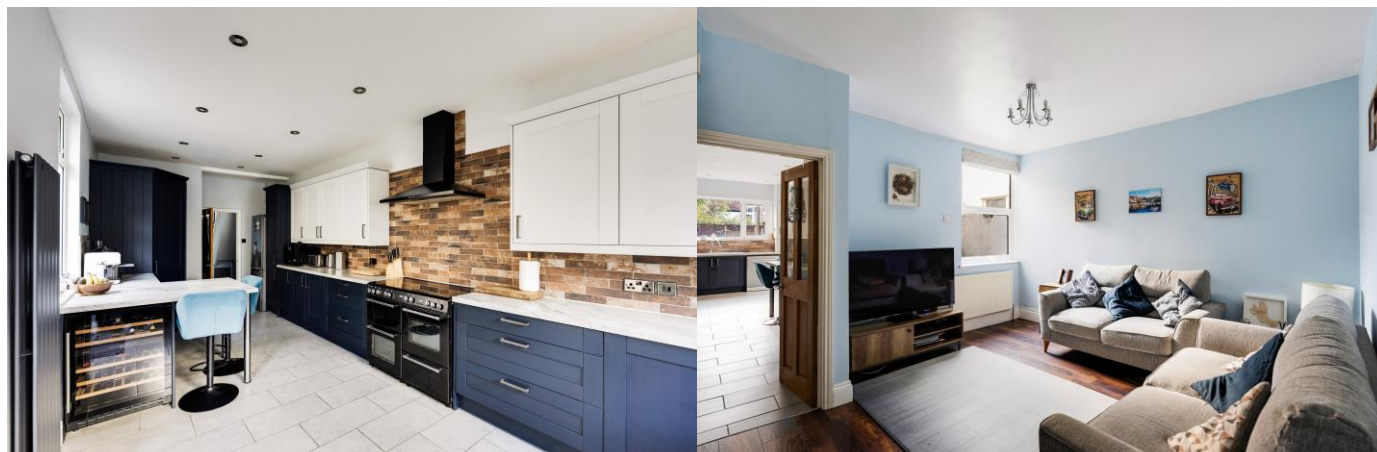


## Sturdon Road, Bedminster Asking Price £550,000

- Three Bedroom Terraced Home
- Beautifully Presented Throughout
- Modern Open-Plan Kitchen
- Spacious Living Room
- Seperate Dining Room
- Generous Sized Master Bedroom with Built-In Storage
- Two Further Double Bedrooms
- Family Bathroom
- South-Facing Enclosed Rear Garden

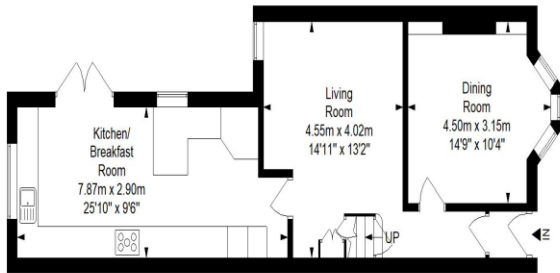
### SUMMARY

This beautifully presented three-bedroom terraced property has been fully updated by the current owners. The ground floor opens into an enclosed porch and includes a modern open-plan kitchen, a spacious living room, and a separate dining room. The kitchen is fitted with a range of base and wall units, a large built-in pantry, a breakfast bar, space for a fridge/freezer, washing machine, and dishwasher, as well as a 7-ring range cooker. Double doors lead out to the rear garden. On the first floor, you'll find a generous master bedroom with built-in wardrobes, two additional double bedrooms, and a family bathroom featuring a separate bath and shower, WC, and wash basin. The south-facing rear garden is mostly laid to lawn with a patio area ideal for al fresco dining, and offers private, secure rear access.

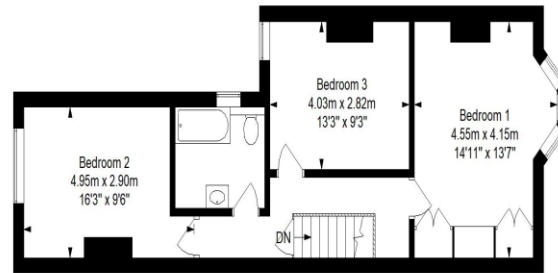


# Sturdon Road, Bedminster, Bristol, BS3 2BB

Approximate Gross Internal Area = 113.2 sq m/ 1218.5 sq ft



Ground Floor



First Floor

This floor plan has been drawn using RICS guidelines (GIA)

Disclaimer: Please note this floor plan is for marketing purposes and is to be used as guide only. All Efforts have been made to ensure its accuracy at time of print.



**Tenure**  
Freehold

**EPC Rating**  
D

**Council Tax Band**  
B

**Services Mains Gas Electric and Water**

Clifton : 01179 744 766  
Long Ashton : 01275 393 956  
Southville : 01174 523 700

