

## Barrow Gurney, Bristol

### Asking Price £580,000

- NO ONWARD CHAIN
- Semi-Detached Family Home
- Open Plan Kitchen/Dining Room
- Two Further Reception Rooms
- Five Generous Sized Bedrooms
- Period Features Throughout
- Downstairs W/C and Family Bathroom
- South Facing Rear Garden With Entrance to Woodland
- Enclosed Front Garden

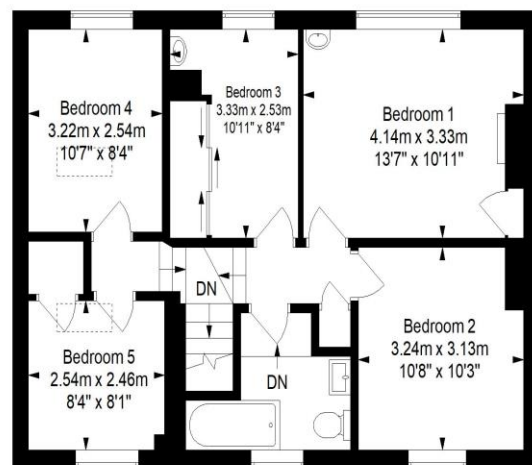
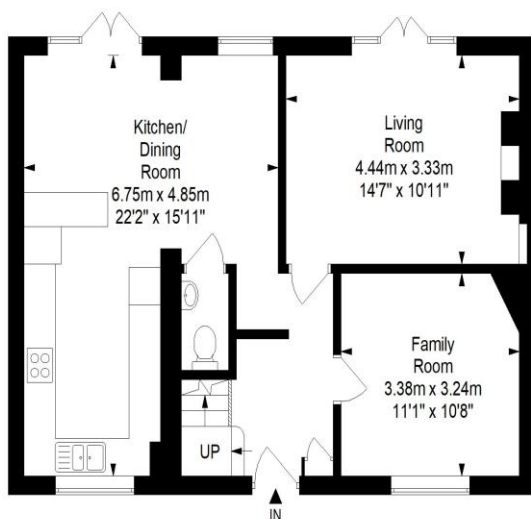
#### SUMMARY

This five bedroom semi-detached period home is situated in the semi-rural sought after location of Barrow Gurney. The property has many period features retained throughout including original wood floorboards. Entering onto the ground floor, the first reception room is positioned at the front of the property, whilst the second sitting room with a log burner and double doors out to the garden, and open plan kitchen/dining room are positioned at the rear. The kitchen features plenty of storage with a range of base and wall units, space for an oven/hob, washing machine, dishwasher and fridge/freezer, as well as double doors leading out to the enclosed rear garden and a downstairs W/C. The first floor offers five generous sized bedrooms, three with built in storage and two with additional sink basins, along with the family bathroom including a W/C, sink and bath with electric shower. To the rear of the property is a south facing garden mostly laid to lawn with a decking area and direct gated access to the woodland behind. There is also an enclosed front garden lawn, on street parking, and solar panels.



## The Cottages, Barrow Gurney, BS48 3SF

Approximate Gross Internal Area = 128.3 sq m/ 1381.1 sq ft



**Tenure**  
Freehold

**EPC Rating**  
E

**Council Tax Band**  
B

**Services**



### Ground Floor

### First Floor

This floor plan has been drawn using RICS guidelines (GIA)

Disclaimer : Please note this floor plan is for marketing purposes and is to be used as guide only.  
All Efforts have been made to ensure its accuracy at time of print

Clifton : 01179 744 766  
Long Ashton : 01275 393 956  
Southville : 01174 523 700

