

Fishers Mead, Long Ashton Asking Price £625,000

- Four Bedroom Detached Family Home
- Beautifully Presented Throughout
- South-West Facing Enclosed Rear Garden
- Open Plan Kitchen/Dining Space
- Large Reception Room
- Master Bedroom with En-Suite
- Three Further Bedrooms
- Utility Room and Downstairs WC
- Modern Family Bathroom

SUMMARY

Situated on this popular development, this four bedroom detached family home has been renovated and beautifully presented. Laid across two floors, the accommodation is light and airy throughout. On the ground floor, there is a large double aspect living room and contemporary modern open plan kitchen dining room, as well as a separate utility and downstairs WC. The kitchen comprises of a kitchen island breakfast bar, a range of base and wall units, built in Samsung double oven and induction hob and built in dishwasher as well as space for an American style fridge/freezer. There are also french doors leading out to the enclosed rear garden. To the first floor there are four generous sized bedrooms, along with a family bathroom. The main double bedroom features plenty of space for storage as well as an en-suite shower room with a walk-in shower, WC and sink. The family bathroom offers a mains fed shower over bath, sink and WC. To the rear of the property is a South-West facing private rear garden, mainly laid to lawn with a patio area ideal for alfresco dining. There is a single garage that can be accessed through the property, along with an off street parking space.

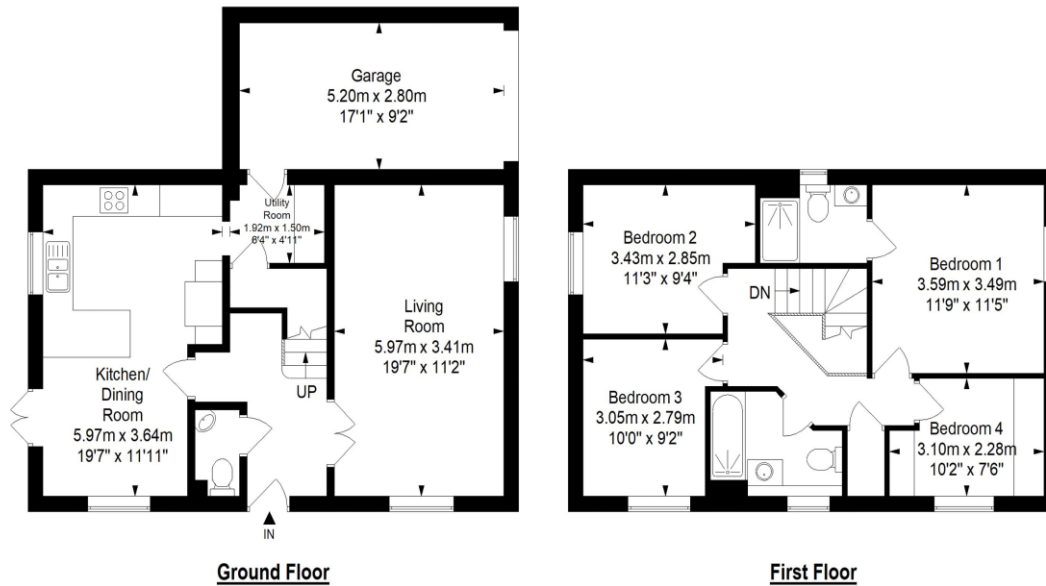


Fishers Mead, Long Ashton, BS41 9EF

Approximate Gross Internal Area = 110.1 sq m/ 1185.1 sq ft
(Excludes Garage)

Garage = 14.6 sq m/ 157.2 sq ft

Total Area = 124.7 sq m/ 1342.3 sq ft



Tenure
Freehold

EPC Rating
C

Council Tax Band
E

Services Mains Gas, Electric and Water

This floor plan has been drawn using RICS guidelines (GIA)

Disclaimer : Please note this floor plan is for marketing purposes and is to be used as guide only.
All Efforts have been made to ensure its accuracy at time of print

Alexander May

Clifton : 01179 744 766
Long Ashton : 01275 393 956
Southville : 01174 523 700

