

Cotswold Road, Bristol Asking Price £375,000

- Three Bedroom Terraced Home
- NO ONWARD CHAIN
- Open Kitchen/Dining Room
- Living Room
- Two Double Bedrooms
- Further Third Bedroom
- Family Bathroom
- Enclosed Generous Sized Rear Garden
- Beautiful Views Across the City

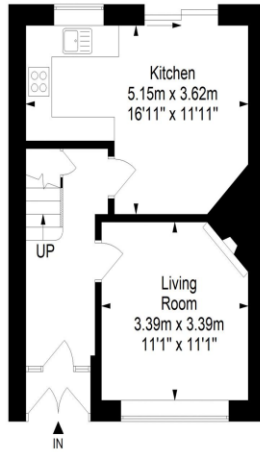
SUMMARY

Offered with no onward chain, this charming three-bedroom terraced home is situated in the popular Windmill Hill area with beautiful views across the city. The ground floor accommodation comprises of an entrance hall, generous sized living room featuring large windows allowing plenty of natural light, and an open kitchen/dining room. The kitchen consists of a range of base and wall units, integrated gas oven/hob and doors leading out to the rear garden, as well as space for a washing machine, fridge freezer and dining table and chairs. On the first floor there are two double bedrooms, both featuring gorgeous fireplaces, a further third bedroom and a family bathroom. The family bathroom comprises of a W/C, pedestal sink and shower/bath. To the rear of the property there is a private rear garden, laid mainly to lawn with a patio area perfect for alfresco dining.

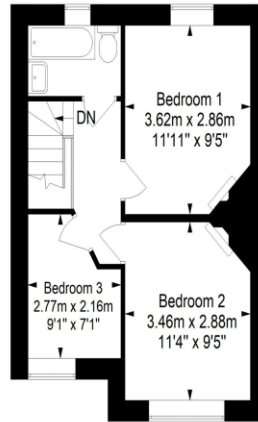


Cotswold Road, Bedminster, Bristol, BS3 4PD

Approximate Gross Internal Area = 72.2 sq m/ 777.2 sq ft



Ground Floor



First Floor

This floor plan has been drawn using RICS guidelines (GIA)

Disclaimer : Please note this floor plan is for marketing purposes and is to be used as guide only.
All Efforts have been made to ensure its accuracy at time of print



Tenure
Freehold

EPC Rating
E

Council Tax Band
B

Services Mains Gas, Electricity and Water

Clifton : 01179 744 766
Long Ashton : 01275 393 956
Southville : 01174 523 700

