

## Luckwell Road, Bedminster Asking Price £475,000

- Three Bedroom Terraced House
- Beautifully Maintained Throughout
- Modern Kitchen
- Open Living/Dining Reception Room
- Generous Sized Master Bedroom
- Two Further Double Bedrooms
- Family Bathroom
- South East Facing Private Rear Garden
- Close Proximity to North Street and Local Amenities

### SUMMARY

Situated within close proximity to North Street, this three-bedroom mid-terrace property has been well maintained by the current owners. The ground floor accommodation comprises of a generous sized sitting room with a gas fire, large bay window offering plenty of natural light and space for a dining area. The kitchen/diner includes a range of base and wall units, built in gas oven and five ring gas hob, stainless steel sink, with space for a fridge/freezer, dishwasher and washing machine, and a door leading out to the rear garden. The bathroom is accessed through the kitchen, at the back of the house comprising of a W/C, sink, shower cubicle, separate bath and combination boiler. The first floor is home to three double bedrooms. The spacious first bedroom is located at the front of the house featuring another bay window and an additional second window, with the second bedroom offering built in storage space. To the rear of the property is a terraced garden which has been landscaped by the current vendors over the years, comprising of vegetable patches, patio space and space for a garden shed.

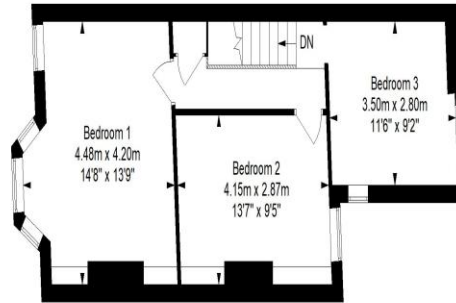


# Luckwell Road, Bedminster, BS3 3EW

Approximate Gross Internal Area = 101.0 sq m/ 1087.2 sq ft



Ground Floor



First Floor



**Tenure**  
Freehold

**EPC Rating**  
D

**Council Tax Band**  
B

**Services Mains Gas, Electric and Water**



This floor plan has been drawn using RICS guidelines (GIA)  
Disclaimer: Please note this floor plan is for marketing purposes and is to be used as guide only.  
All Efforts have been made to ensure its accuracy at time of print.

Clifton : 01179 744 766  
Long Ashton : 01275 393 956  
Southville : 01174 523 700

