

Providence View, Long Ashton Asking Price £550,000

- Semi-Detached Home in Elevated Position
- Open-Plan Kitchen-Dining Room
- Sitting Room
- Three Bedrooms
- Stunning Views
- Light And Airy Throughout
- Driveway for Multiple Vehicles
- Family Bathroom
- Utility Room

SUMMARY

Located in an elevated position in a sought-after location, this three-bedroom semi-detached property enjoys superb views. The ground floor comprises of a beautiful open kitchen/dining area, utility room and sitting room with fabulous views towards Dundry and surrounding countryside. The first floor comprises of three bedrooms (with the master bedroom benefitting from fitted wardrobes) and a family bathroom. Outside the property is an enclosed south facing level garden and a driveway for multiple vehicles.

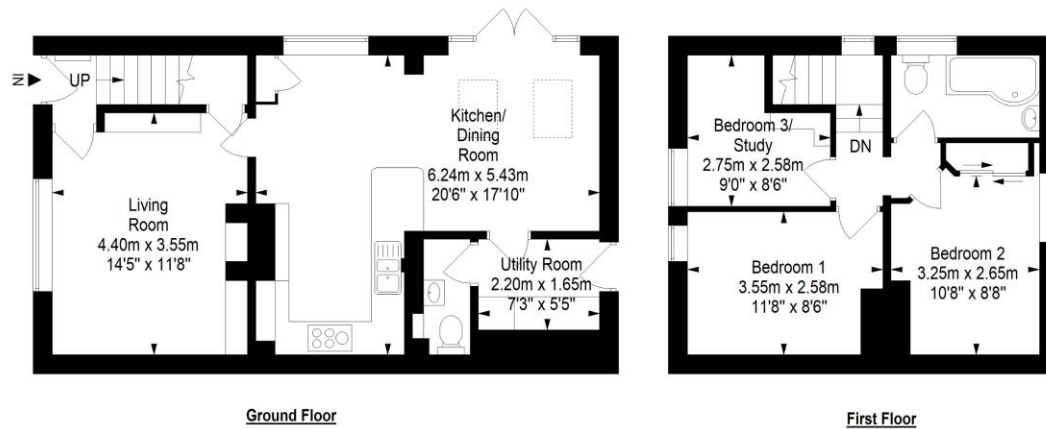
LOCATION

Surrounded by rolling countryside, Long Ashton lies just a few miles southwest of Bristol and enjoys facilities to include a supermarket, post office, baker and wine merchant amongst others. Whether it is a relaxed or faster pace of life you are looking for Long Ashton has the answer. The beautiful Ashton Court Estate with its deer park and acres of open space ideal for walking, cycling or riding; three reputable golf courses; a good choice of pubs and, of course, Clifton Village with all it has to offer is on a matter of minutes away. For those with families, Long Ashton and the surrounding areas have a wide choice of highly regarded primary, secondary and independent schools.



Providence View, Long Ashton, BS41 9DH

Approximate Gross Internal Area = 88.7 sq m/ 954.8 sq ft



Tenure
Freehold

EPC Rating
C

Council Tax Band
C

Services Mains Gas, Electric and Water

AlexanderMay
SALES & LETTINGS

This floor plan has been drawn using RICS guidelines (GIA)
Disclaimer : Please note this floor plan is for marketing purposes and is to be used as guide only.
All Efforts have been made to ensure its accuracy at time of print.

Clifton : 01179 744 766
Long Ashton : 01275 393 956
Southville : 01174 523 700

