



## Holt Street, Hindley, Wigan



**£160,000**

- BEAUTIFUL END TERRACE
- THREE BEDROOMS
- BEAUTIFULLY PRESENTED
- ON STREET PARKING
- POPULAR LOCATION
- LEASEHOLD
- COUNCIL TAX BAND A
- EPC RATING TBC



Northwood Sales and Lettings are delighted to offer to the market this stunning three bedroom terraced situated on Holt Street in Hindley.

Finished to a very high standard this property compromises a large living area, modern kitchen with breakfast bar and a door to the yard. Upstairs we have three bedrooms and bathroom. This home is perfect for families and couples. Local amenities and excellent public transport links, it is also in proximity to local schools.

**VIEWING ESSENTIAL!!! NO CHAIN!!!**

**LEASEHOLD TBC - GROUND RENT TBC PER ANNUM - EPC RATING TBC - COUNCIL TAX BAND C**







For information on broadband or mobile coverage in the area, please visit [checker.ofcom.org.uk](https://checker.ofcom.org.uk). Should you require EV charging, we advise that you get clarification as to whether the property can support an EV charger. To know if there is a risk of flood at this property, please visit [gov.uk/check-long-term-flood-risk](https://gov.uk/check-long-term-flood-risk).

We have taken every care to ensure that the particulars listed are accurate; however, this cannot be guaranteed. Therefore, we advise that prior to a viewing, any potential tenants or buyers carry out research on the property and let us know if you have any queries we can help with.

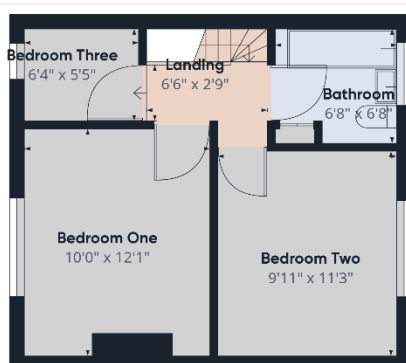
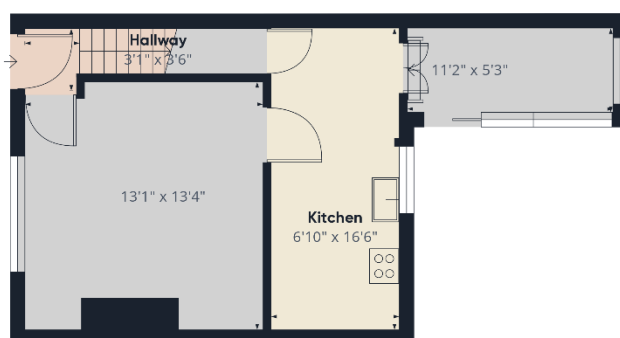






## DISCLAIMER

These details are intended to give a fair description only and their accuracy cannot be guaranteed nor are any floor plans (if included) exactly to scale. These details do not constitute part of any contract and are not to be relied upon as statements of representation or fact. Intended purchasers are advised to recheck all measurements before committing to any expense and to verify the legal title of the property from their legal representative. Any contents shown in the images contained within these particulars will not be included in the sale unless otherwise stated or following individual negotiations with the vendor. Northwood have not tested any apparatus, equipment, fixtures, or services so cannot confirm that they are in working order and the property is sold on this basis.



Approximate total area<sup>(1)</sup>  
721.11 ft<sup>2</sup>

(1) Excluding balconies and terraces

While every attempt has been made to ensure accuracy, all measurements are approximate, not to scale. This floor plan is for illustrative purposes only.

GIRAFFE360

northwood

Northwood (Wigan) Limited

01942 321 305

wigan@northwooduk.com