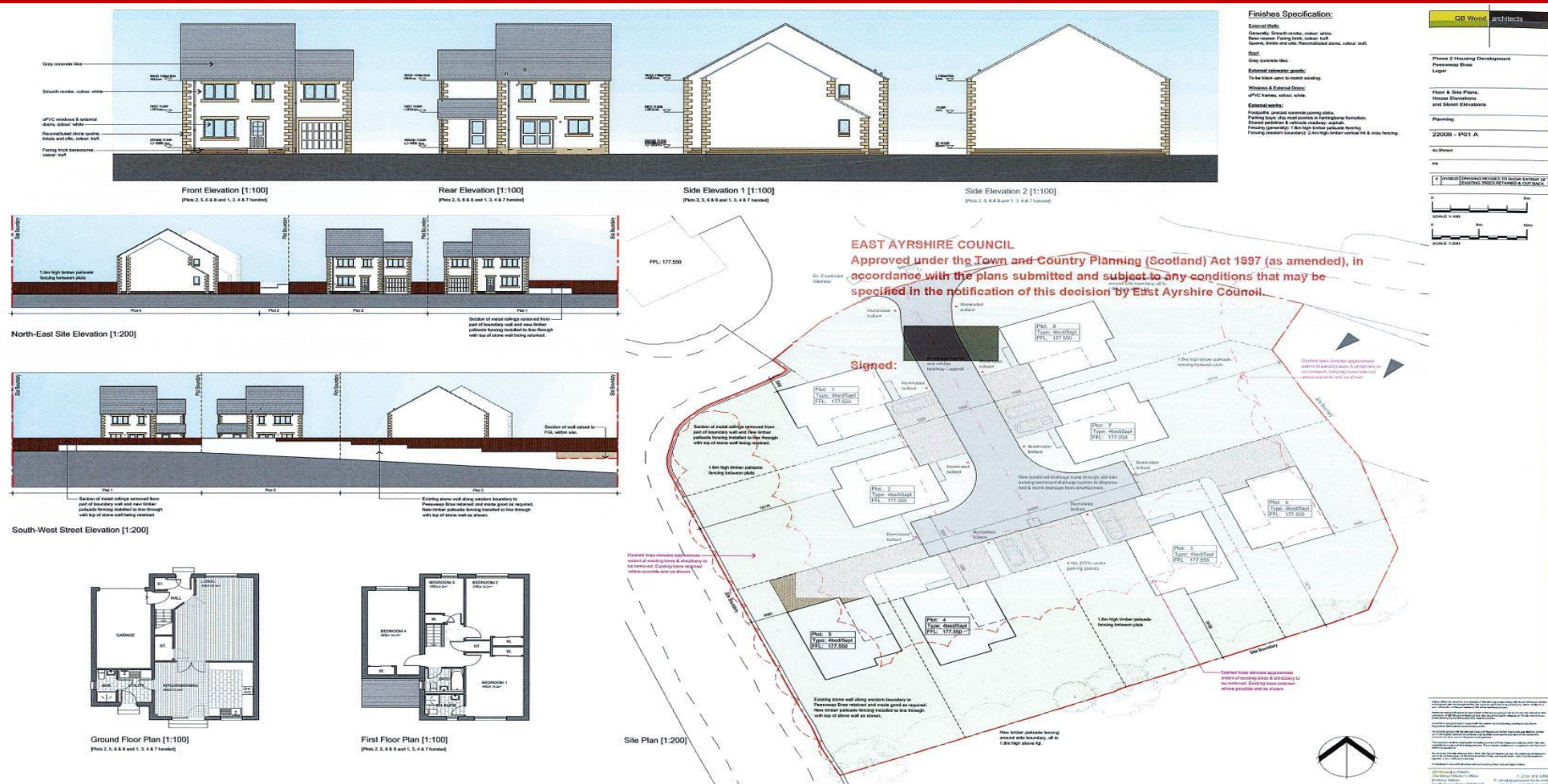


# 8 x HOUSING PLOTS WITH COUNCIL PLANNING CONSENT AT PEESWEEP BRAE, LUGAR £260,000











## DESCRIPTION

D W Shaw are delighted to present to the market 8 Plots of land with East Ayrshire Council planning permission under the Town and Country Planning (Scotland) Act 1997. This permission is for 4 Bedroom / 5 Apartment Detached Villas with boundary fencing and individual plot fencing for privacy. The plots are situated within an exclusive private cul de sac in a semi rural location.

The plots are situated approx 2 miles from Cumnock which offers a range of amenities including supermarkets and retail shopping, transport, swimming pool and leisure centre, as well as the multi educational facility Barony Campus. Nearby is also Auchinleck railway station where trains are available to Glasgow and Carlisle.

### Market Valuation

If we can assist you on the valuation of your own property our Property Manager will be happy to arrange an appointment suitable to yourself. This is a service provided free of charge and without obligation.

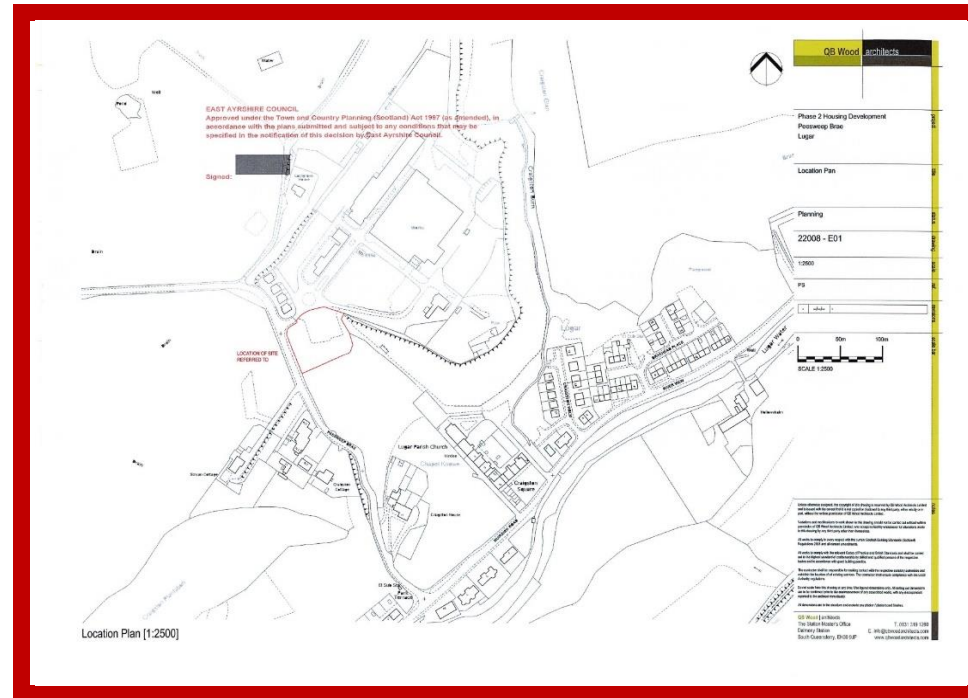
### Offers

Offers are submitted in Scottish Legal Form to the selling agents D W Shaw, 3 The Square, Cumnock, KA18 1BG  
Fax 01290 421484. DX 566421 Cumnock

### Viewing Arrangements

By appointment with D W Shaw,  
3 The Square,  
Cumnock, KA18 1BG.

Contact Marion Wyllie on 01290 421484 or email  
[mwyllie@dwshaw.co.uk](mailto:mwyllie@dwshaw.co.uk)



**OFFICE DETAILS**  
 3 The Square, Cumnock, KA18 1BG  
 Telephone: 01290 421484  
 Email [mmccaig@dwshaw.co.uk](mailto:mmccaig@dwshaw.co.uk)

#### Disclaimer

Whilst we endeavour to make these particulars as accurate as possible, they do not form any part of any contract or offer, nor are they guaranteed. Measurements are approximate and in most cases they are taken with a digital/sonic measuring device. It should not be inferred that items visible in any photographs are necessarily for sale. If there is any part of these particulars that you find misleading or simply wish clarification on any point, please contact our office immediately where we will endeavour to assist you in any way possible. Photographs have been taken with a wide angled lens