



BEECROFT  
ESTATES

## 42 Lawnwood Drive

Goldthorpe, Rotherham, S63 9GD

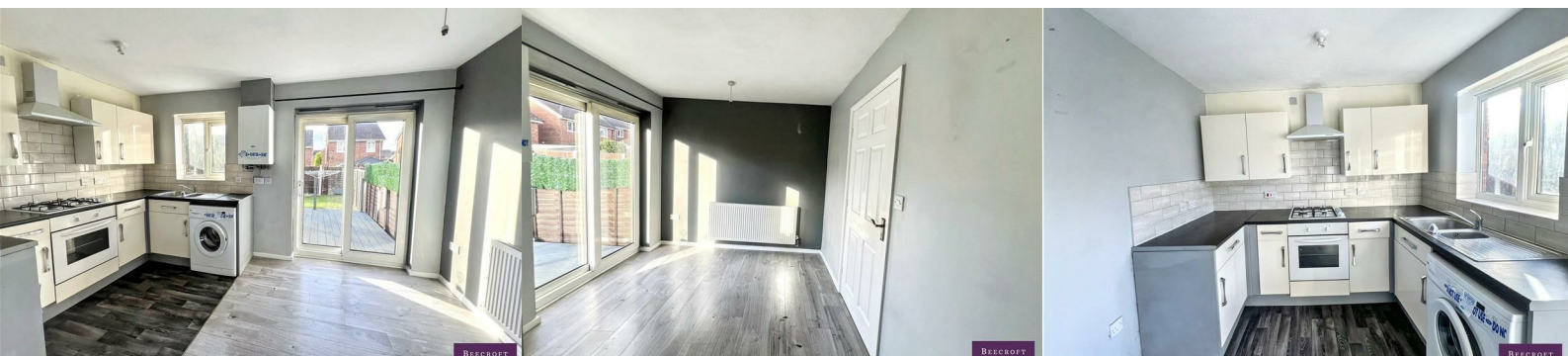
Offers Over £120,000



NEST OR INVEST!!!

This modern two-bedroom end town house, set in a quiet cul-de-sac in the popular village of Goldthorpe, offers stylish, low-maintenance living ideal for first-time buyers or investors. The property has an enclosed rear garden and downstairs wc, making it an appealing and practical home. Goldthorpe provides a great range of local amenities including shops, cafés, schools and leisure facilities, along with excellent transport links by road, rail and bus to nearby towns such as Barnsley, Doncaster and Rotherham. With ongoing regeneration in the area and strong rental demand, this attractive and well-presented home presents a fantastic opportunity for anyone looking to take their first step onto the property ladder or expand their investment portfolio.

CALL TO BOOK YOUR VIEWING !



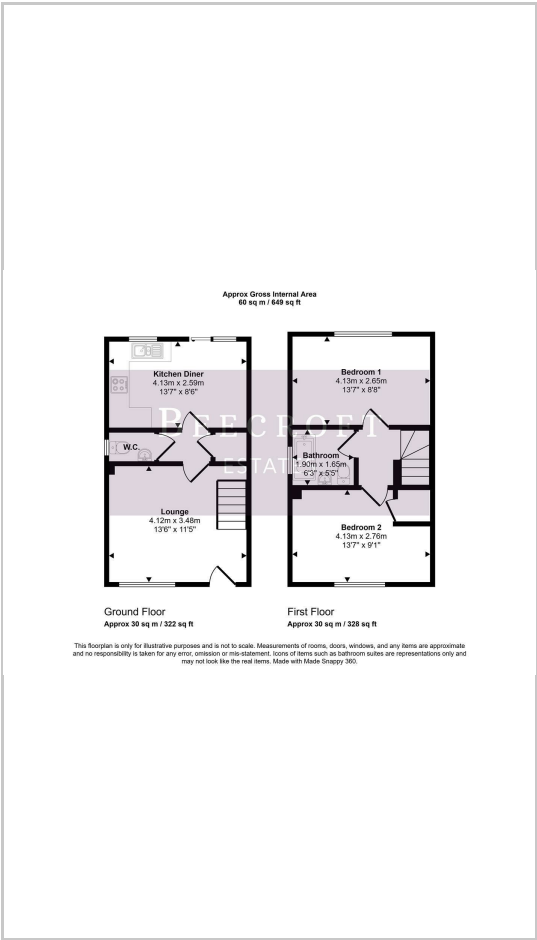


- Lounge
- Downstairs WC
- Kitchen/Diner
- Landing
- Master Bedroom
- Bedroom Two
- Bathroom
- Exterior

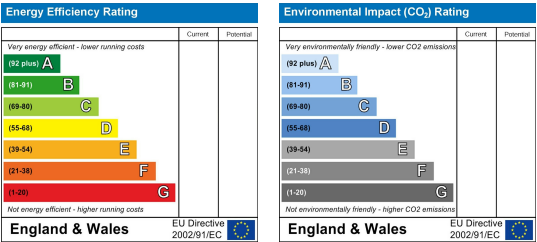
Area Map



Floor Plans



Energy Efficiency Graph



These particulars, whilst believed to be accurate are set out as a general outline only for guidance and do not constitute any part of an offer or contract. Intending purchasers should not rely on them as statements of representation of fact, but must satisfy themselves by inspection or otherwise as to their accuracy. No person in this firms employment has the authority to make or give any representation or warranty in respect of the property.