



19 Woolscroft View

Hemingfield, Barnsley, S73 0AX

£260,000



Extended Four-Bedroom Townhouse in the Heart of Hemingfield, Barnsley

Welcome to this beautifully extended four-bedroom townhouse, located in the sought-after village of Hemingfield. Offering generous living spaces and modern amenities, this property is perfectly suited for families seeking a comfortable and convenient lifestyle.

Situated in the village of Hemingfield, the property enjoys a peaceful, community-focused atmosphere while remaining close to essential amenities. Its proximity to the Dearne Valley Park and major transport links makes commuting simple and convenient.

CALL BEECROFT ESTATES TO BOOK YOUR VIEWING !



GROUND FLOOR

ENTRANCE HALL

A welcoming entrance hall, the staircase rises to the first floor accommodation.

LOUNGE

This beautifully designed living space is both spacious and inviting, offering a perfect balance of style and comfort. The room is flooded with natural light, thanks to a charming box bay window and provides delightful views to the front of the property.

DINING KITCHEN

This impressive kitchen has been thoughtfully designed with both style and functionality in mind, making it a standout feature of the home. Sleek tiled splashbacks and wood-effect worktops create a contemporary yet welcoming feel, Integrated appliances comprising a gas hob, fan-assisted oven, an extractor fan, fridge freezer and plumbing for a washing machine, seamlessly blending practicality with modern aesthetics. This kitchen offers ample space for meal preparation and storage, making it perfect for families and those who enjoy entertaining.

SUNROOM/SITTING ROOM

This stunning extension enhances the property with its modern design and practicality. It offers views over the rear garden, making it a delightful space to relax or entertain. Skylight windows flood the room with natural light, creating a bright and airy atmosphere. With sliding doors providing seamless access to the garden while bringing the outdoors in.

DOWNSTAIRS WC

A two piece suite comprising WC and wash hand basin with radiator.

FIRST FLOOR

LANDING

BEDROOM TWO

A double bedroom having a front facing double glazed window, fitted wardrobes and radiator.

BEDROOM THREE

A double bedroom having a rear facing double glazed window, fitted wardrobes and radiator

BEDROOM FOUR

Having a rear facing double glazed window and radiator.

HOUSE BATHROOM

A newly fitted suite comprising bath, WC and vanity wash hand basin. Heated ladder rail and modern tiling to the walls and flooring.

SECOND FLOOR

MASTER BEDROOM

A well proportioned master bedroom boasting fitted wardrobes providing ample hanging and storage space, front facing double glazed window and radiator. Gives access to the en-suite.

EN-SUITE

A three piece suite comprising double shower cubicle, WC and wash hand basin. Part tiling to the walls and velux style window.

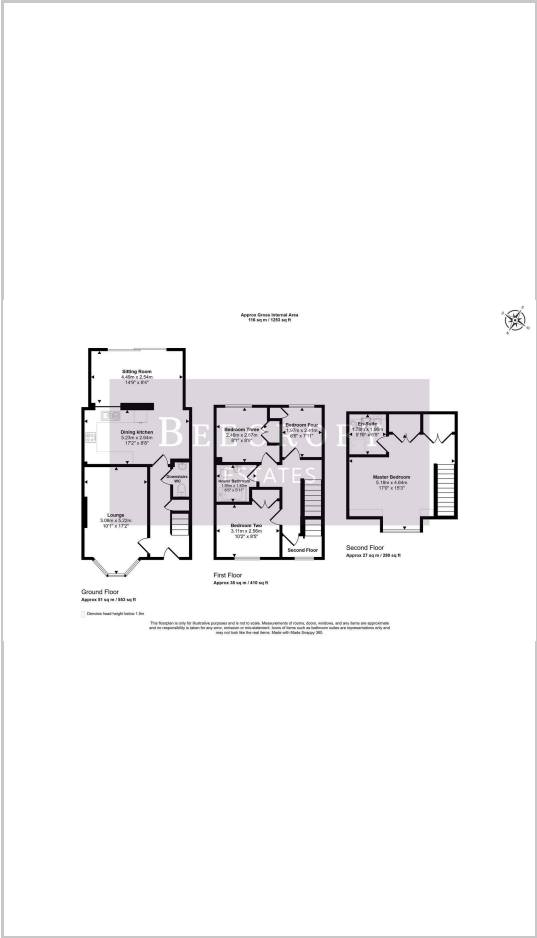
OUTSIDE

Large south facing elongated tiered garden, with patio area, and separate decking area having a storage shed and conifers offering extra privacy. Situated adjacent to the property is a garage with a driveway providing off road parking.

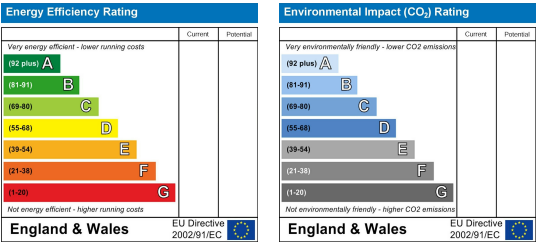
Area Map



Floor Plans



Energy Efficiency Graph



These particulars, whilst believed to be accurate are set out as a general outline only for guidance and do not constitute any part of an offer or contract. Intending purchasers should not rely on them as statements of representation of fact, but must satisfy themselves by inspection or otherwise as to their accuracy. No person in this firms employment has the authority to make or give any representation or warranty in respect of the property.