



# 145 Kingfisher Drive

Wombwell, Barnsley, S73 0UX

Offers In The Region Of £350,000



Nestled in the charming Kingfisher Drive, Wombwell, Barnsley, this stunning detached house built in 2005 offers a perfect blend of modern comfort and timeless elegance. Boasting 2 reception rooms, 4 bedrooms, and 2 bathrooms, this property is ideal for those seeking a spacious and luxurious living space.

As you step inside, you are greeted by a spacious living area, perfect for entertaining guests or simply relaxing with your loved ones. The large kitchen dining room is a chef's dream, offering ample space to whip up culinary delights. The property also features a utility room, ensuring practicality meets style.

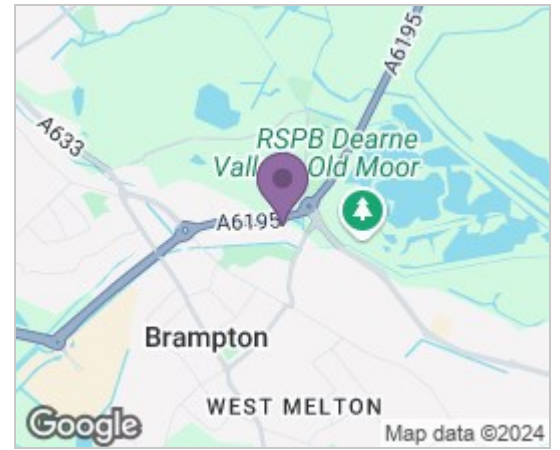
The outdoor space is equally impressive, with a garden featuring a new deck, pool and Hot Tub, providing a serene oasis to unwind after a long day. Parking will never be an issue with space for 2 vehicles and a double detached garage with a gated drive.

The 4 bedrooms offer comfort and privacy, with one bedroom featuring an en-suite for added convenience. The family bathroom is equipped with a shower cubicle, catering to all your needs.

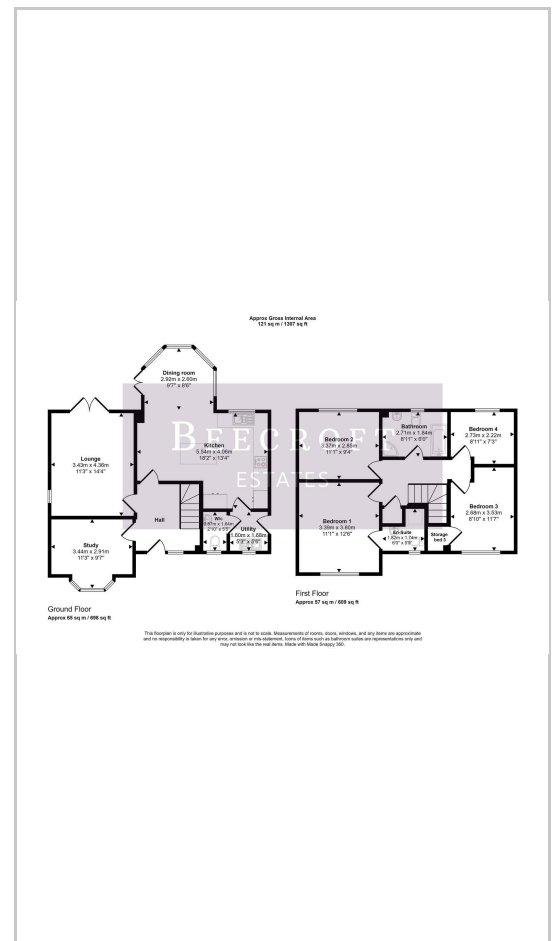


- Front
- Hall
- Study
- Lounge
- Kitchen
- Dining room
- Utility
- W/c
- Bedroom 1
- En-suite
- Bedroom 2
- Bedroom 3
- Bedroom 4
- Drive
- Garden

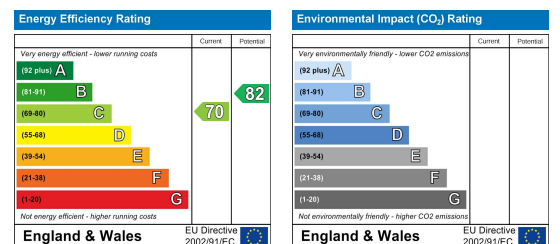
## Area Map



## Floor Plans



## Energy Efficiency Graph



These particulars, whilst believed to be accurate are set out as a general outline only for guidance and do not constitute any part of an offer or contract. Intending purchasers should not rely on them as statements of representation of fact, but must satisfy themselves by inspection or otherwise as to their accuracy. No person in this firm's employment has the authority to make or give any representation or warranty in respect of the property.