



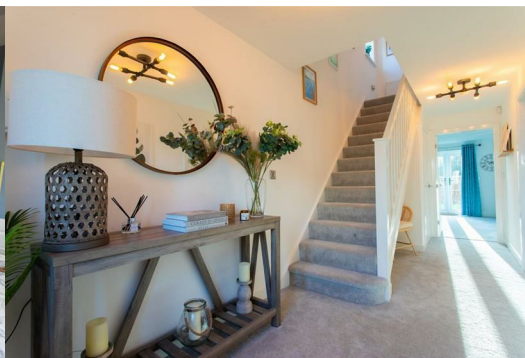
The Milton Manor Oaks, Lime Tree Grove

Oak Road, Wath-Upon-Dearne, Rotherham, S63 7AR

£244,995



THE MILTON
AN EXCLUSIVE DEVELOPMENT OF 29 BRAND
NEW HIGH SPECIFICATION HOMES, IN A
CONVENIENT SEMI-RURAL LOCATION NEAR
ROTHERHAM AND SHEFFIELD.



Description

Family run Yorkshire developer Hooper Homes are proud to introduce Manor Oaks to Oak Road, Wath Upon Dearne.

Where tradition meets modernity, building in the heart of communities to enhance them, Manor Oaks will boast 29 brand-new high-quality homes in a well-connected and sought after area.

With a host of amenities and conveniences on the doorstep, as well as Manvers Lake for lakeside walks within walking distance, a leisurely and well-connected lifestyle awaits!

With a focus on quality, appearance, and style, using highly skilled trades people. Home buyers can get involved with the process, right from the reservation, choosing from a range of Designer Kitchens through to flooring and tiling.

Due to our family ethos, we can offer a one to one service and you can be sure Hooper Homes have everything covered for you.

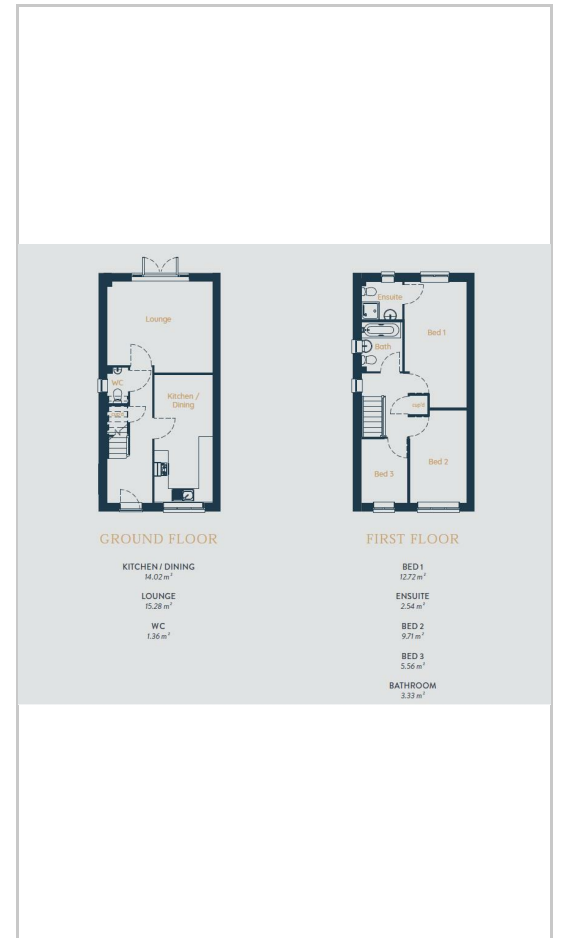
Each Hooper Homes includes:

- Choice of Kitchens (Bronze package included)
- Choice of Worktops with upstand
- Glass Splashback
- Oven/induction hob & extractor fan
- Choice of Karndean flooring (kitchen)
- Choice of Carpets throughout
- Choice of stylish wall and floor tiles in the bathroom
- Spotlights in kitchen and bathroom
- Washroom Chrome heated towel radiator
- Turfed gardens with private fencing
- Outside tap
- Outside lights
- 2 car parking spaces
- Electric vehicle charging point

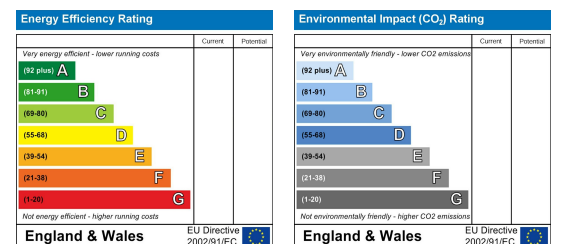
Area Map



Floor Plans



Energy Efficiency Graph



These particulars, whilst believed to be accurate are set out as a general outline only for guidance and do not constitute any part of an offer or contract. Intending purchasers should not rely on them as statements of representation of fact, but must satisfy themselves by inspection or otherwise as to their accuracy. No person in this firm's employment has the authority to make or give any representation or warranty in respect of the property.

Wombwell 6-8 Park Street, Wombwell, S73 0DJ

Tel: 01226 340110 Email: info@beecroftstates.co.uk www.beecroftstates.co.uk