



32 Rotherham Road

Wath-Upon-Dearne, Rotherham, S63 6AE

£120,000



This property in the sought-after village of Wath upon Dearne presents an exciting opportunity for those looking to create their ideal family home. Conveniently situated near local schools, transportation options, and amenities, its location offers both practicality and charm.

The house features an impressive front garden, adding to its curb appeal, and a low-maintenance garden at the rear, perfect for relaxation and outdoor activities. With spacious living areas throughout, there's ample room for comfortable living and entertaining.

Additionally, the shared driveway provides convenient off-street parking which in turn leads to the garage - a valuable asset in any family home.

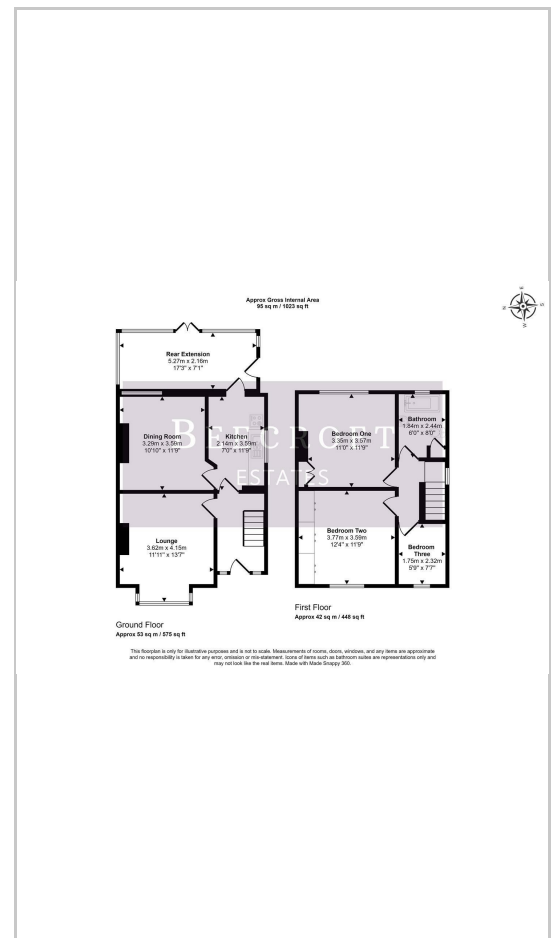


GROUND FLOOR
 ENTRANCE HALL
 LOUNGE
 DINING ROOM
 KITCHEN
 REAR PORCH
 FIRST FLOOR
 LANDING
 BEDROOM ONE
 BEDROOM TWO
 BEDROOM THREE
 BATHROOM
 OUTSIDE
 GARAGE

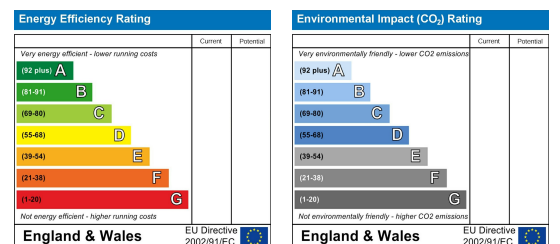
Area Map



Floor Plans



Energy Efficiency Graph



These particulars, whilst believed to be accurate are set out as a general outline only for guidance and do not constitute any part of an offer or contract. Intending purchasers should not rely on them as statements of representation of fact, but must satisfy themselves by inspection or otherwise as to their accuracy. No person in this firm's employment has the authority to make or give any representation or warranty in respect of the property.