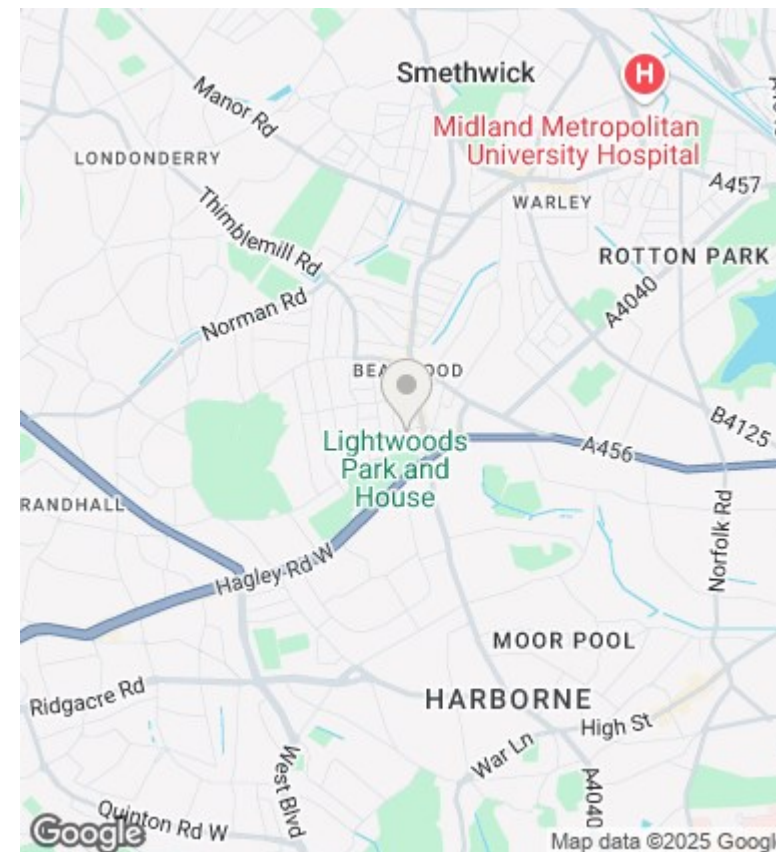
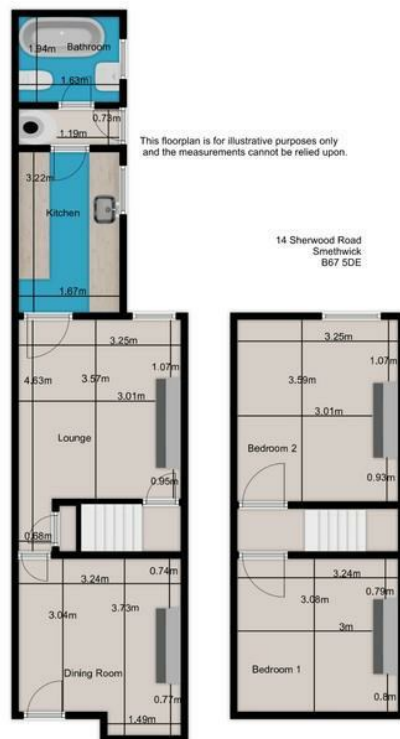




## 14 Sherwood Road, Bearwood, Smethwick, B67 5DE

£895 PCM

- Redecorated in 2019
- Gas central heating and double glazing
- Traditional mid-terraced property
- Close to Bearwood High Street



## Directions

## Viewings

Viewings by arrangement only.  
Call 01905 796 111 to make an appointment.

## Council Tax Band

B

## EPC Rating:

D

Energy Efficiency Rating		
	Current	Potential
Very energy efficient - lower running costs		
(92 plus) <b>A</b>		
(81-91) <b>B</b>		83
(69-80) <b>C</b>		
(55-68) <b>D</b>	56	
(39-54) <b>E</b>		
(21-38) <b>F</b>		
(1-20) <b>G</b>		
Not energy efficient - higher running costs		
England & Wales		EU Directive 2002/91/EC