



{ WATTEAU SQUARE CROYDON CR0
£1,417 PER MONTH AVAILABLE NOW

Hamptons
THE HOME EXPERTS

{ THE PARTICULARS

Watteau Square Croydon CR0

£1,417 Per Month
Furnished

 1 Bedroom

Features

- 2 month free rent, - Spacious, - Modern, -
Close to Station, - Parking available by
negotiation, - Furnished option

Council Tax

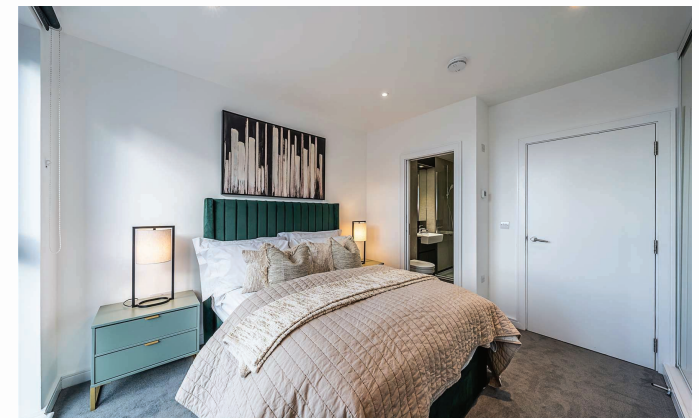
Council tax band not specified

Hamptons
www.hamptons.co.uk

{ FULLY REFURBISHED 1-BEDROOM FLAT – PANNETT HOUSE, WATTEAU SQUARE,

The Property

This beautifully presented and fully refurbished one-bedroom flat in Pannett House, Watteau Square, CR0 3FB, offers a bright and modern living space finished to an excellent standard throughout. The property features a spacious open-plan lounge with plenty of natural light, a brand-new contemporary kitchen with integrated appliances, and a stylishly updated bathroom with quality fittings. The double bedroom is generously sized and designed for comfort, complemented by fresh décor and new flooring across the entire apartment. Furniture is optional and can be provided at the same rent, giving tenants the flexibility to move straight in with ease. The building is well maintained and conveniently located close to local shops, transport links, parks, and all essential amenities, making it ideal for professionals or couples seeking a clean, modern home in a peaceful yet well-connected area. Secure on-site parking is also available at an additional cost. If you'd like, I can make it more premium, more concise, or tailored for a specific listing platform. **2 months incentives Rent free applied in rent.



No floor plan currently available

For Clarification
We wish to inform prospective tenants that we have prepared these particulars as a general guide and they have been confirmed as accurate by the landlord. We have not verified permissions, nor carried out a survey, tested the services, appliances and specific fittings. Room sizes are approximate and measurement figures rounded: they are taken between internal wall surfaces and therefore include cupboards/shelves, etc. Accordingly, they should not be relied upon for

carpets and furnishings. It should also be noted that all fixtures and fittings, carpeted, curtains/blinds, kitchen equipment and garden statuary, whether fitted or not, are deemed removable by the landlord unless specifically itemised with these particulars. Please enquire in office or on our website for details on holding deposit and tenancy deposit figures.

