



44 White Cliff Mill Street, Blandford Forum, Dorset, DT11 7BQ





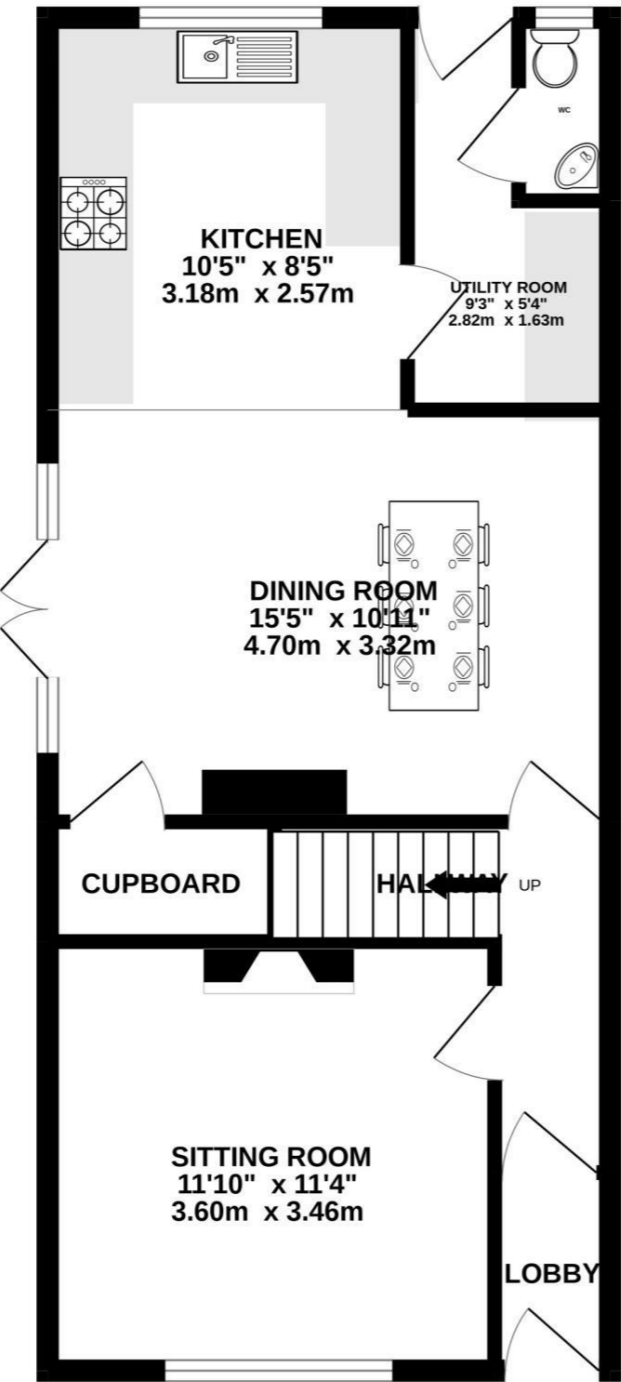
A 2/3 bedroom character semi-detached property offers versatile living being a short walk from the town centre and boasting a mix of period and modern design.

This attractive red-brick home combines period charm with modern comfort, set behind a characterful flint and brick boundary wall. Inside, the layout flows beautifully from a welcoming central dining area and into a bright, contemporary kitchen. The kitchen is finished with soft grey cabinetry, stone-effect worktops, and a herringbone-patterned floor, complemented by a large window and glazed doors that open onto a generous patio garden, creating a seamless indoor-outdoor connection. A handy utility room and WC can be accessed off the kitchen. also on the ground floor is a spacious room which offers flexibility as a snug, 3rd bedroom or even a home office. Upstairs, the principal bedroom enjoys excellent natural light and benefits from a large built in wardrobe, with the 2<sup>nd</sup> bedroom also offering a built in wardrobe and window overlooking the rear garden. The bathroom is thoughtfully designed with a freestanding bath, separate shower enclosure, and elegant tiling for a calm, spa-like feel. Outside, the paved garden is bordered by raised beds and mature planting, providing a private and inviting space for relaxation or entertaining. This is a home that blends character and practicality in a sought-after setting.

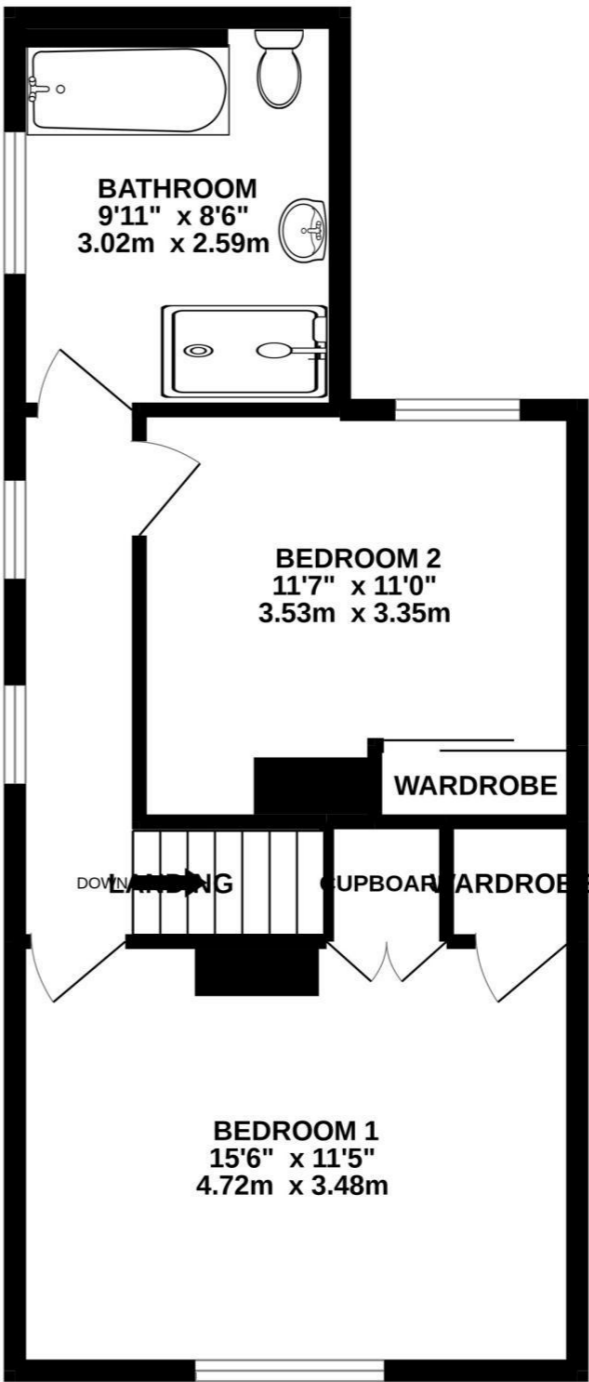


£360,000 Freehold

GROUND FLOOR



1ST FLOOR



Whilst every attempt has been made to ensure the accuracy of the floorplan contained here, measurements of doors, windows, rooms and any other items are approximate and no responsibility is taken for any error, omission or mis-statement. This plan is for illustrative purposes only and should be used as such by any prospective purchaser. The services, systems and appliances shown have not been tested and no guarantee as to their operability or efficiency can be given.  
Made with Metropix ©2022

Please note Forum Sales & Lettings and their client give notice that:

1. They have no authority to make or give any representation or warranties in relations to the property. These particulars do not form part of any offer or contract and must not be relied upon as statements or representations of fact.
2. Any areas, common measurements or distances are approximate. The text, photographs and plans are for guidance only and are not necessarily comprehensive. It should not be assumed that the property has all necessary Planning, Building Regulations or other consents and Forum Sales and Lettings have not tested any services, equipment or facilities. Purchasers must satisfy themselves by inspection or otherwise.

EPC Rating - D

Viewing Arrangements - Strictly by appointment with Forum Sales & Lettings

15 Salisbury Street, Blandford Forum, Dorset, DT11 7AU

Tel: 01258 459600

