



60 Manor Avenue, Poole, Dorset, BH12 4LD





A strikingly modern and luxurious home offering exceptional design throughout, as well as a garage and a fully functioning home bar.

Tucked away in a sought-after residential setting, this exceptional contemporary home offers a seamless blend of architectural elegance and high-end living. From the moment you arrive, the striking façade—combining crisp white render with natural stone and a sharply pitched roofline—sets the tone for the refined interiors that follow.

Inside, the expansive open-plan layout is bathed in natural light, with large-format glazed doors and windows framing the landscaped garden beyond. Underfloor heating runs throughout the ground floor, enhancing the sense of comfort and luxury beneath the sleek tiled surfaces. The kitchen is a true centrepiece, finished with bespoke cabinetry, premium appliances, and a statement island that flows effortlessly into the living and dining areas. A stylish staircase rises beside the dining space, its glass balustrades and designer lighting adding a sculptural quality to the heart of the home.

Further ground floor accommodation includes a dedicated cinema room, offering a cosy retreat with ambient lighting and acoustic styling, as well as a versatile reception room currently arranged as a therapy space.

Upstairs, the master suite is a sanctuary of calm, complete with a Juliet balcony, vaulted ceiling, and dual skylights. A luxurious ensuite and a pair of walk-in wardrobes—his and hers—complete the suite, reflecting the home’s attention to detail and lifestyle appeal. Further double bedroom also benefit from generous proportions and their own wardrobes, with additional ensuite facilities ensuring comfort and privacy.

Outside, the garden has been thoughtfully designed for both relaxation and entertaining. A sunken jacuzzi sits adjacent to the property, with a stylish dining area sit beneath a sleek pergola to the rear. A separate outbuilding at the far end of the garden houses a fully equipped bar.

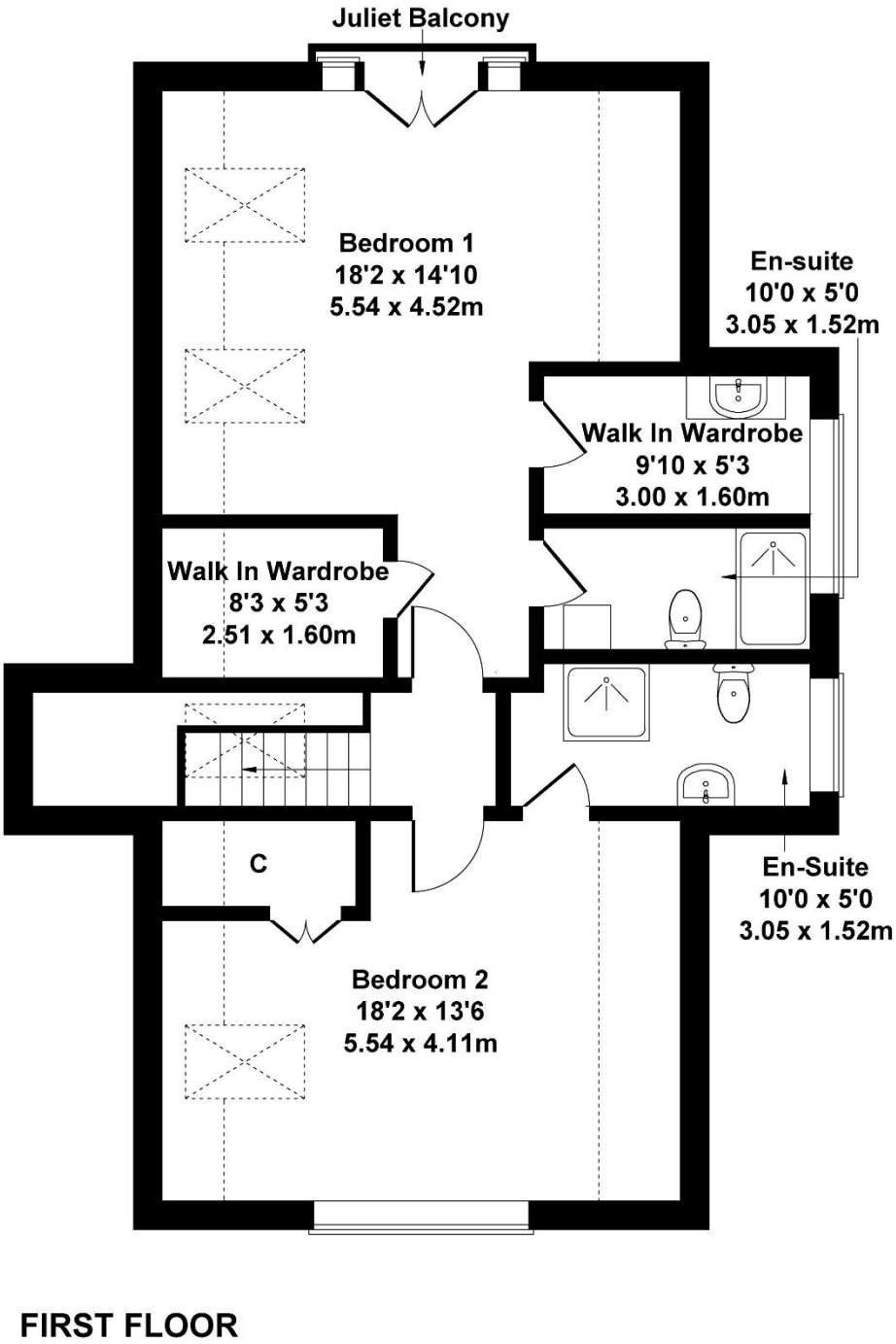
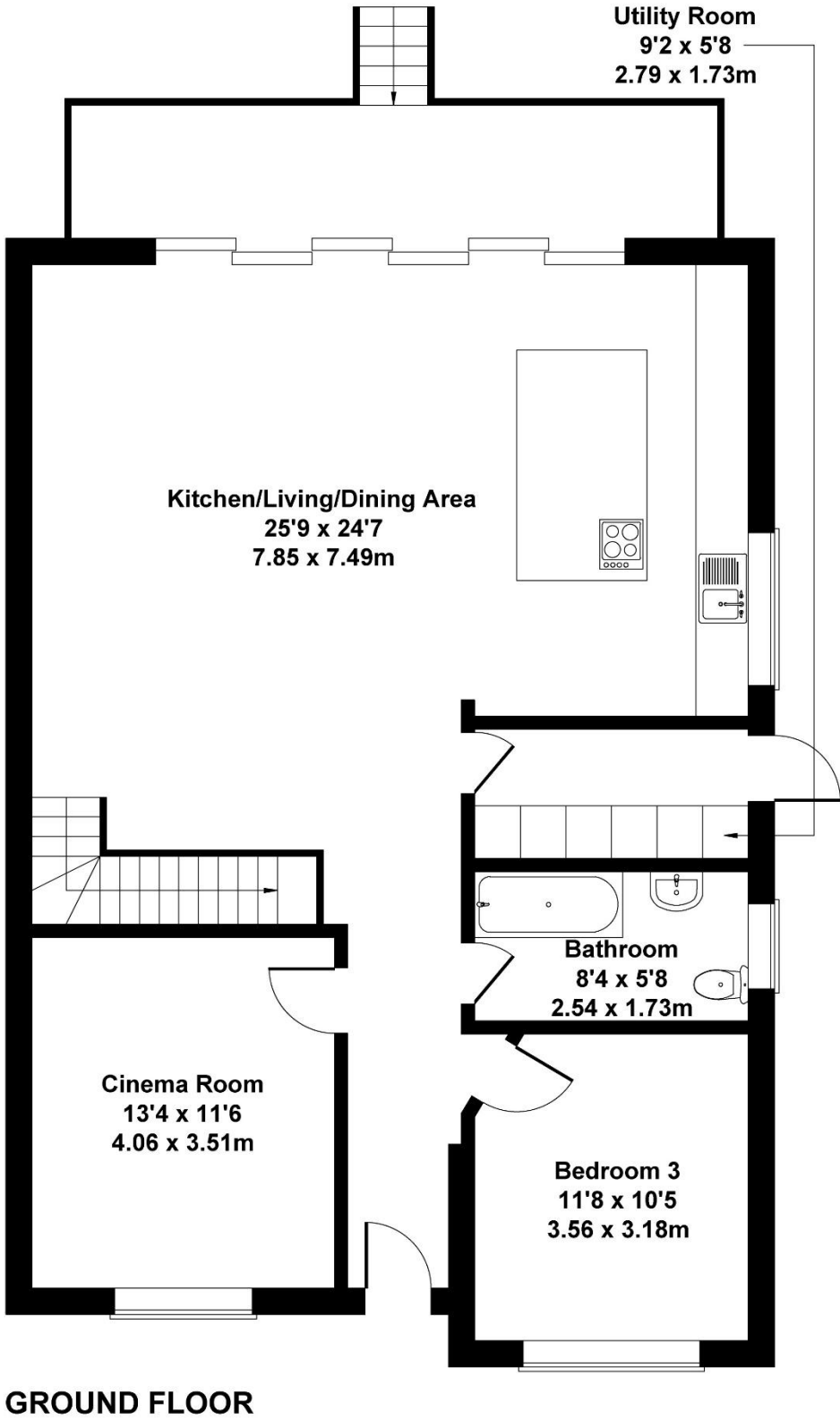
Inside, the bar area is a vibrant social hub, complete with a pool table, arcade machine, and rustic beams strung with ambient lighting. This unique addition elevates the property’s leisure offering, making it ideal for hosting guests or enjoying quiet evenings at home. Please note bar items are under separate negotiations.

Every element of this residence has been curated to deliver a premium lifestyle, combining cutting-edge design with luxurious finishes in a setting that feels both exclusive and welcoming.



£800,000 Freehold

Approximate Gross Internal Area
1875 sq ft - 174 sq m



Not to Scale. Produced by The Plan Portal 2025
For Illustrative Purposes Only.

Please note Forum Sales & Lettings and their client give notice that:

1. They have no authority to make or give any representation or warranties in relations to the property. These particulars do not form part of any offer or contract and must not be relied upon as statements or representations of fact.
2. Any areas, common measurements or distances are approximate. The text, photographs and plans are for guidance only and are not necessarily comprehensive. It should not be assumed that the property has all necessary Planning, Building Regulations or other consents and Forum Sales and Lettings have not tested any services, equipment or facilities. Purchasers must satisfy themselves by inspection or otherwise.