



1 Longmead Cottages, Milborne St Andrew, Dorset, DT11 0HU





A unique opportunity to purchase this spacious 3/4 bedroom semi detached property, set in 0.4 of an acre, currently housing multiple outbuildings.

Set amidst sweeping Dorset countryside, this charming home enjoys a peaceful rural setting with far-reaching views across open fields and rolling hills.

The surrounding gardens and mature greenery create a sense of privacy and space.

Inside, the ground floor flows beautifully from the welcoming entrance hall into a characterful lounge, where exposed beams and a wood-burning stove create a cosy, inviting atmosphere. The kitchen combines rustic charm with modern practicality, featuring terracotta flooring, exposed beams, and a clean, contemporary finish with white cabinetry and subway tiling.

A separate dining room offers space for more formal occasions, while the adjoining garden room provides a tranquil spot to enjoy the changing seasons.



Upstairs, three bedrooms are arranged around a central landing, with the principal bedroom being of particularly good size. A modern shower room completes the first floor, offering convenience and style.

Outside, the grounds extend to approximately 0.4 acres, clearly defined with the aerial view, with well-kept lawns, mature planting, and a selection of useful outbuildings. A gravel driveway leads up through the garden, framed by trees and hedgerows, and opens to uninterrupted countryside views.

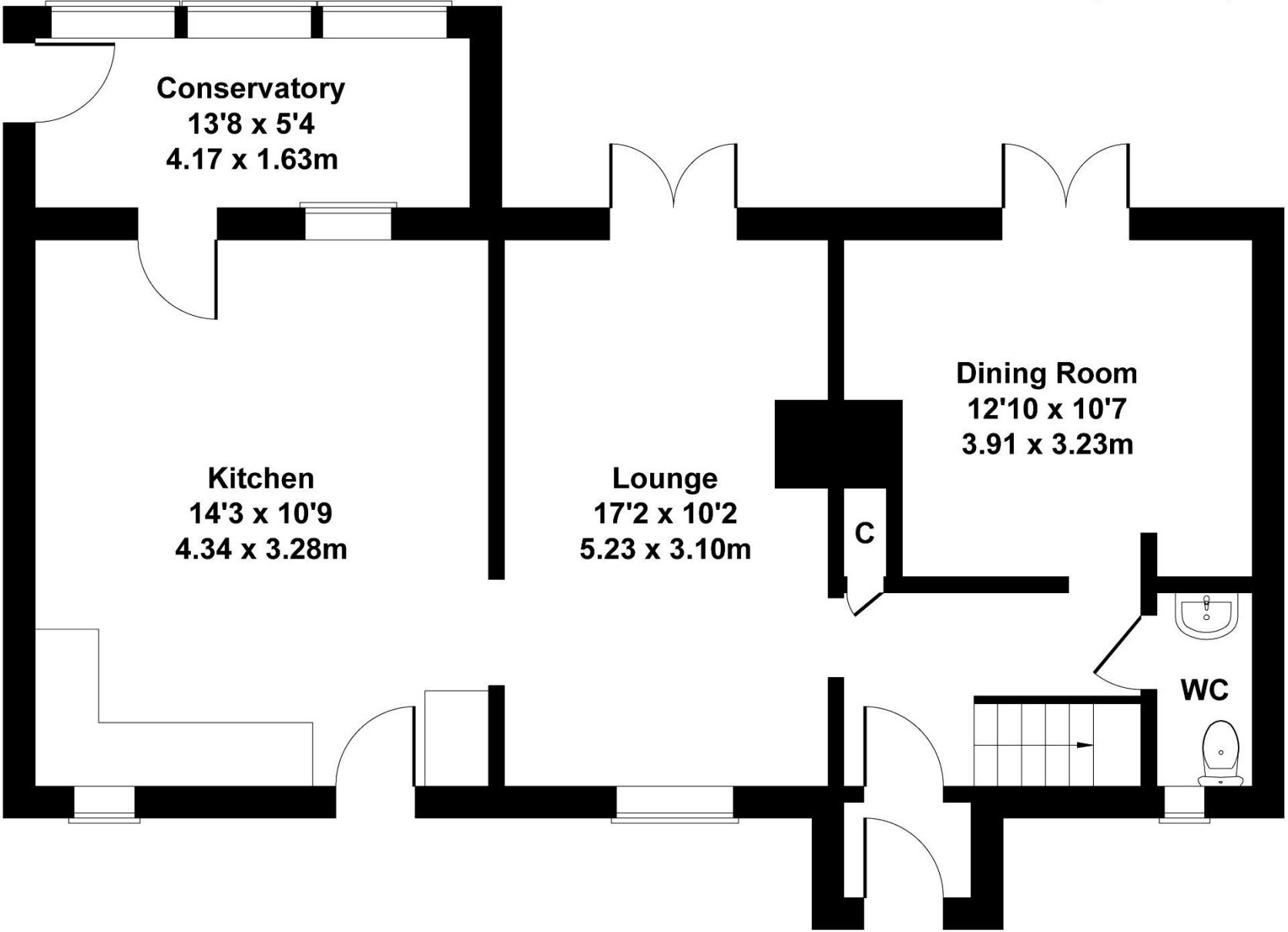
To the rear, the house opens onto a private garden with a patio area and a lawn that blends seamlessly into the open fields beyond, offering a peaceful and picturesque backdrop.



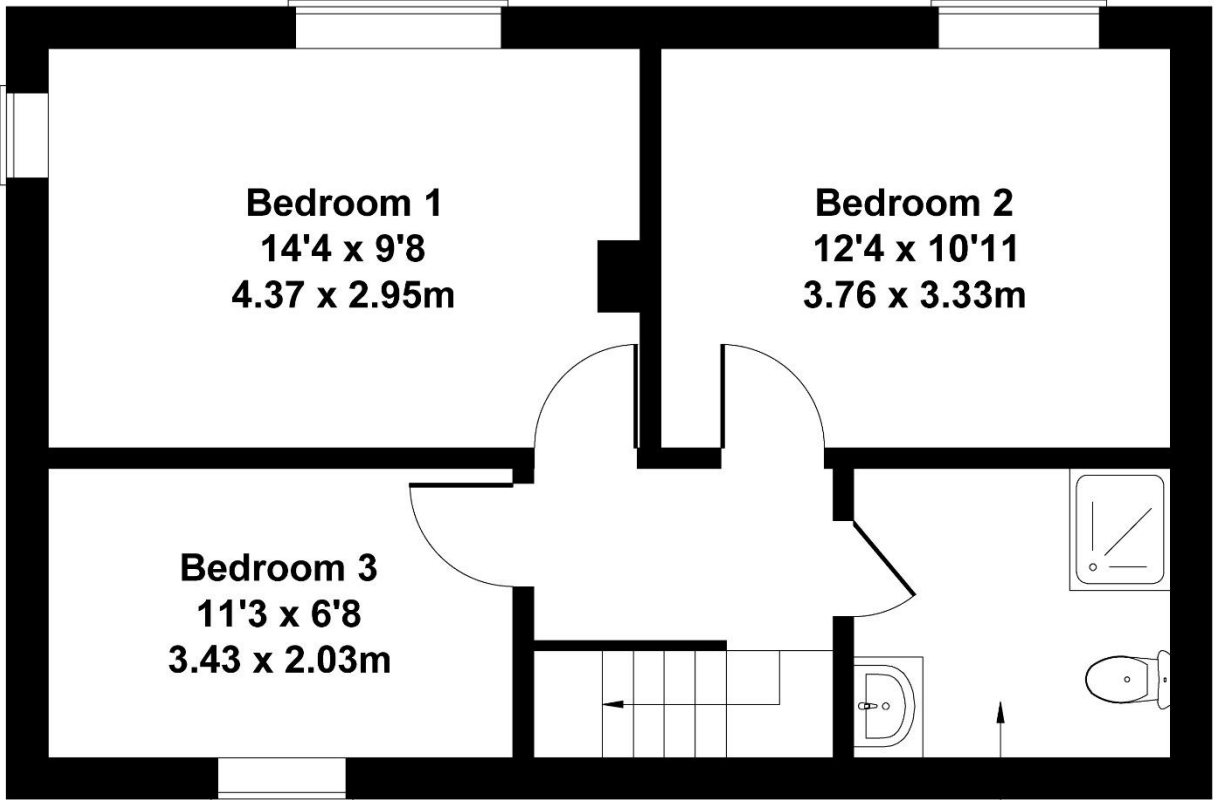
£525,000 Freehold

1 Longmead Cottages

Approximate Gross Internal Area
1224 sq ft - 114 sq m



GROUND FLOOR



FIRST FLOOR

Not to Scale. Produced by The Plan Portal 2025
For Illustrative Purposes Only.

Please note Forum Sales & Lettings and their client give notice that:

1. They have no authority to make or give any representation or warranties in relations to the property. These particulars do not form part of any offer or contract and must not be relied upon as statements or representations of fact.
2. Any areas, common measurements or distances are approximate. The text, photographs and plans are for guidance only and are not necessarily comprehensive. It should not be assumed that the property has all necessary Planning, Building Regulations or other consents and Forum Sales and Lettings have not tested any services, equipment or facilities. Purchasers must satisfy themselves by inspection or otherwise.

EPC Rating - C

Viewing Arrangements - Strictly by appointment with Forum Sales & Lettings

15 Salisbury Street, Blandford Forum, Dorset, DT11 7AU

Tel: 01258 459600

