



5 St Marys Court, Sixpenny Handley, Salisbury, Wiltshire, SP5





Beautifully Extended Three-Bedroom Home in a Charming Village Setting

Set in the heart of a picturesque village, this spacious three-bedroom home seamlessly blends modern design with spacious family living. Thoughtfully extended and updated, this property offers a stylish interior and generous proportions throughout.

The ground floor boasts an entrance hall with a convenient WC, leading into a spacious living room featuring a charming bay window and a cozy log-burning stove—perfect for relaxing evenings. To the rear, the impressive open-plan kitchen and dining area serves as the heart of the home. With sleek contemporary cabinetry, integrated appliances, and a skylight that fills the space with natural light, this area is ideal for entertaining or enjoying family meals.

Upstairs, the property offers three well-proportioned bedrooms, including a bright principal bedroom, a spacious second bedroom, and a versatile third room ideal for a home office or child's bedroom. A modern family bathroom completes the first floor.

Offering approximately 1,042 sq. ft. of living space across two levels, this home also benefits from thoughtful storage solutions and a well-organized layout.

Whether you're a growing family or a couple seeking more space in a tranquil, community-focused location, this property is sure to impress.

Hall

Cloakroom

Living Room 16'10" (5.13m) x 16'7" (5.05m)

Kitchen/Dining Room 19'7" (5.97m) x 16'7" (5.05m)

First Floor Landing

Bedroom 1 12'6" (3.81m) x 8'11" (2.72m)

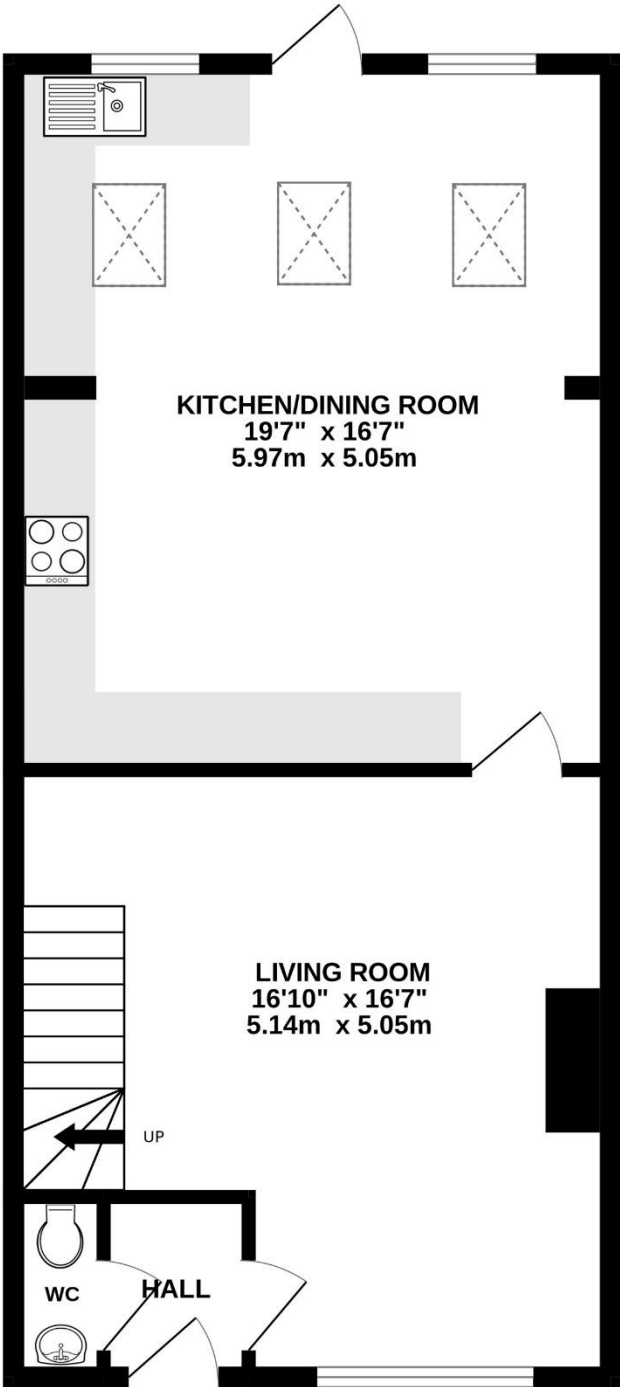
Bedroom 2 12'2" (3.71m) x 10'5" (3.18m)

Bedroom 3 9'1" (2.77m) x 7'4" (2.24m)

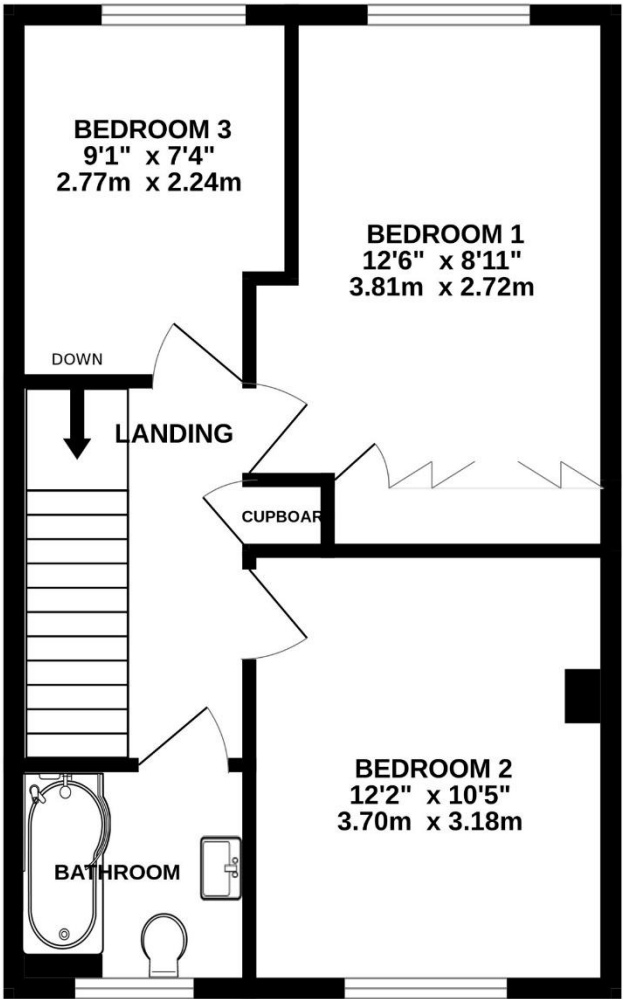
Bathroom

£315,000 Freehold

GROUND FLOOR
597 sq.ft. (55.4 sq.m.) approx.



1ST FLOOR
445 sq.ft. (41.4 sq.m.) approx.



TOTAL FLOOR AREA : 1042 sq.ft. (96.8 sq.m.) approx.

Whilst every attempt has been made to ensure the accuracy of the floorplan contained here, measurements of doors, windows, rooms and any other items are approximate and no responsibility is taken for any error, omission or mis-statement. This plan is for illustrative purposes only and should be used as such by any prospective purchaser. The services, systems and appliances shown have not been tested and no guarantee as to their operability or efficiency can be given.
Made with Metropix ©2025

Please note Forum Sales & Lettings and their client give notice that:

- 1. They have no authority to make or give any representation or warranties in relations to the property. These particulars do not form part of any offer or contract and must not be relied upon as statements or representations of fact.
- 2. Any areas, common measurements or distances are approximate. The text, photographs and plans are for guidance only and are not necessarily comprehensive. It should not be assumed that the property has all necessary Planning, Building Regulations or other consents and Forum Sales and Lettings have not tested any services, equipment or facilities. Purchasers must satisfy themselves by inspection or otherwise.

Viewing Arrangements - Strictly by appointment with Forum Sales & Lettings

15 Salisbury Street, Blandford Forum, Dorset, DT11 7AU

Tel: 01258 459600

EPC Rating - C

