



14 Roman Way, Shillingstone, Dorset, DT11 0RH



An attractive two bedroom coach house with traditional brick elevations under a clay tiled roof and benefits from double glazing and gas fired central heating. *NO FORWARD CHAIN*

Built in 2007 by Wyatt Homes, the property has light and spacious living accommodation with high ceilings, Velux windows and garage.

The front door opens into an entrance hall with a staircase rising to a first floor hallway. There is a ground floor WC and an internal door into the garage.

The open plan living room occupies one end of the property and has a Juliet balcony looking over the parking area and velux windows providing natural light.

The kitchen area comprises a range of floor and wall-mounted units with laminate worktops, 1.5 sink and mixer tap. Integral appliances include dishwasher, washer/dryer, electric double oven, gas hob and fridge freezer. There are two access doors to the kitchen.

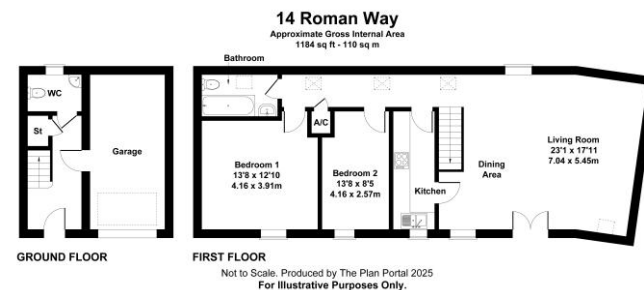
The remaining accommodation is accessed via a hallway with a Velux window to the rear and two double bedrooms. The family bathroom is situated at the far end of the coach house.

There is a garage with up and over door and a parking space.

LEASE REMAINING: 980 YEARS

Property building insurance: £401.30

£240,000 Leasehold



Please note Forum Sales & Lettings and their client give notice that:

1. They have no authority to make or give any representation or warranties in relations to the property. These particulars do not form part of any offer or contract and must not be relied upon as statements or representations of fact.
2. Any areas, common measurements or distances are approximate. The text, photographs and plans are for guidance only and are not necessarily comprehensive. It should not be assumed that the property has all necessary Planning, Building Regulations or other consents and Forum Sales and Lettings have not tested any services, equipment or facilities. Purchasers must satisfy themselves by inspection or otherwise.

EPC Rating - C

Viewing Arrangements - Strictly by appointment with Forum Sales & Lettings

15 Salisbury Street, Blandford Forum, Dorset, DT11 7AU

Tel: 01258 459600

Forum
Sales & Lettings