



2c White Cliff Mill Street, Blandford Forum, Blandford Forum, DT11 7BE





A well presented one bedroom ground floor flat situated in close proximity to the town centre. This property would suit an investor, particularly looking for an AIR BNB.

**Entrance Hallway** - Entrance hallway with doors leading to lounge, bathroom and bedroom.

**Living Room 13'4" (4.06m) x 10'2" (3.1m)**- UPVC window to rear aspect, with door to garden, radiator and hard flooring.

**Kitchen 10'9" (3.28m) x 5'0" (1.52m)**- Fitted modern kitchen, stainless steel hob, oven, extractor fan, under counter fridge and washing machine. Appliances supplied on a non repairing basis.

**Bedroom 9'1" (2.77m) x 9'1" (2.77m)**- UPVC window to front, built-in wardrobes, radiator.

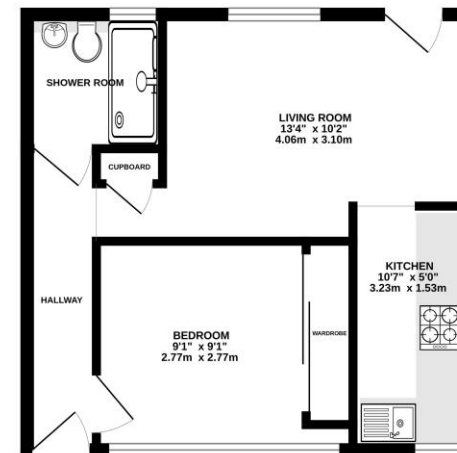
**Shower Room** - White bathroom suite with shower, heated towel rail and vinyl flooring.

**Outside Space** – Courtyard style garden with decked area and shed.

LEASE: 972 Years Remaining

£150,000 Leasehold

GROUND FLOOR  
363 sq.ft. (33.8 sq.m.) approx.



TOTAL FLOOR AREA: 363 sq ft. (33.8 sq.m.) approx.  
Whilst every effort has been made to ensure the accuracy of the figures contained herein, measurements of doors, windows, rooms and any other items are approximate and no responsibility is taken for any error, omission or misstatement. These figures are for information only and should not be used as a basis for any financial or other transaction. The actual figures may vary from those shown herein and the purchaser is to their own satisfaction as to their accuracy or otherwise.