



2a, Blandford St Mary, Blandford St Mary, Dorset, DT11 9LH

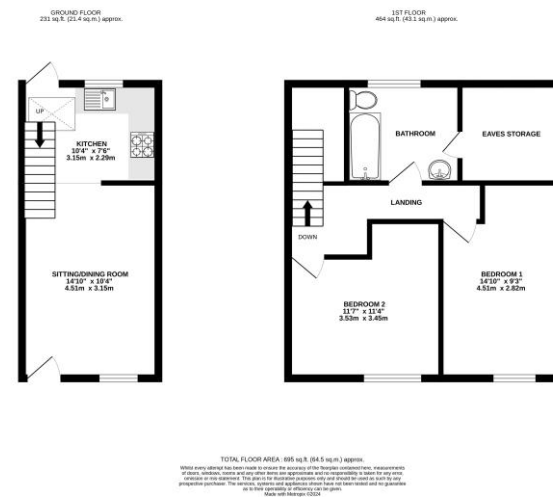


A gem of a two bedroom property situated on the outskirts of Blandford St. Mary. The property benefits from 2 Double Bedrooms, Gas Central Heating & Character Features

£240,000 Freehold



Sitting/Dining Room 14'10" (4.52m) x 10'4" (3.15m)
Kitchen 10'4" (3.15m) x 7'1" (2.16m)
First Floor Landing
Bedroom 1 15'1" (4.6m) x 9'3" (2.82m)
Bedroom 2 11'7" (3.53m) x 11'4" (3.45m)
Bathroom



Please note Forum Sales & Lettings and their client give notice that:

1. They have no authority to make or give any representation or warranties in relations to the property. These particulars do not form part of any offer or contract and must not be relied upon as statements or representations of fact.
2. Any areas, common measurements or distances are approximate. The text, photographs and plans are for guidance only and are not necessarily comprehensive. It should not be assumed that the property has all necessary Planning, Building Regulations or other consents and Forum Sales and Lettings have not tested any services, equipment or facilities. Purchasers must satisfy themselves by inspection or otherwise.

EPC Rating - D

Viewing Arrangements - Strictly by appointment with Forum Sales & Lettings

15 Salisbury Street, Blandford Forum, Dorset, DT11 7AU

Tel: 01258 459600

