



20 Heddington Drive, Blandford Forum, Dorset, DT11 7TP





**A superbly presented four bedroom detached house situated on this popular development, with a stunning two storey extension providing a quality master bedroom with en-suite.**

This lovely detached home features a newly constructed two-storey extension completed by the current owners. This property offers plenty of space for families and is designed for comfortable living.

The property flows nicely from the front door into the entrance hall, you'll find a bright living room with bifold doors that open up to a low-maintenance garden, perfect for outdoor relaxation or gatherings. The open layout connects the living area to the kitchen and dining space with an abundance of base and wall units providing cupboard and drawer storage.

Upstairs, there are four good sized bedrooms, with the master bedroom coming with its own en-suite.

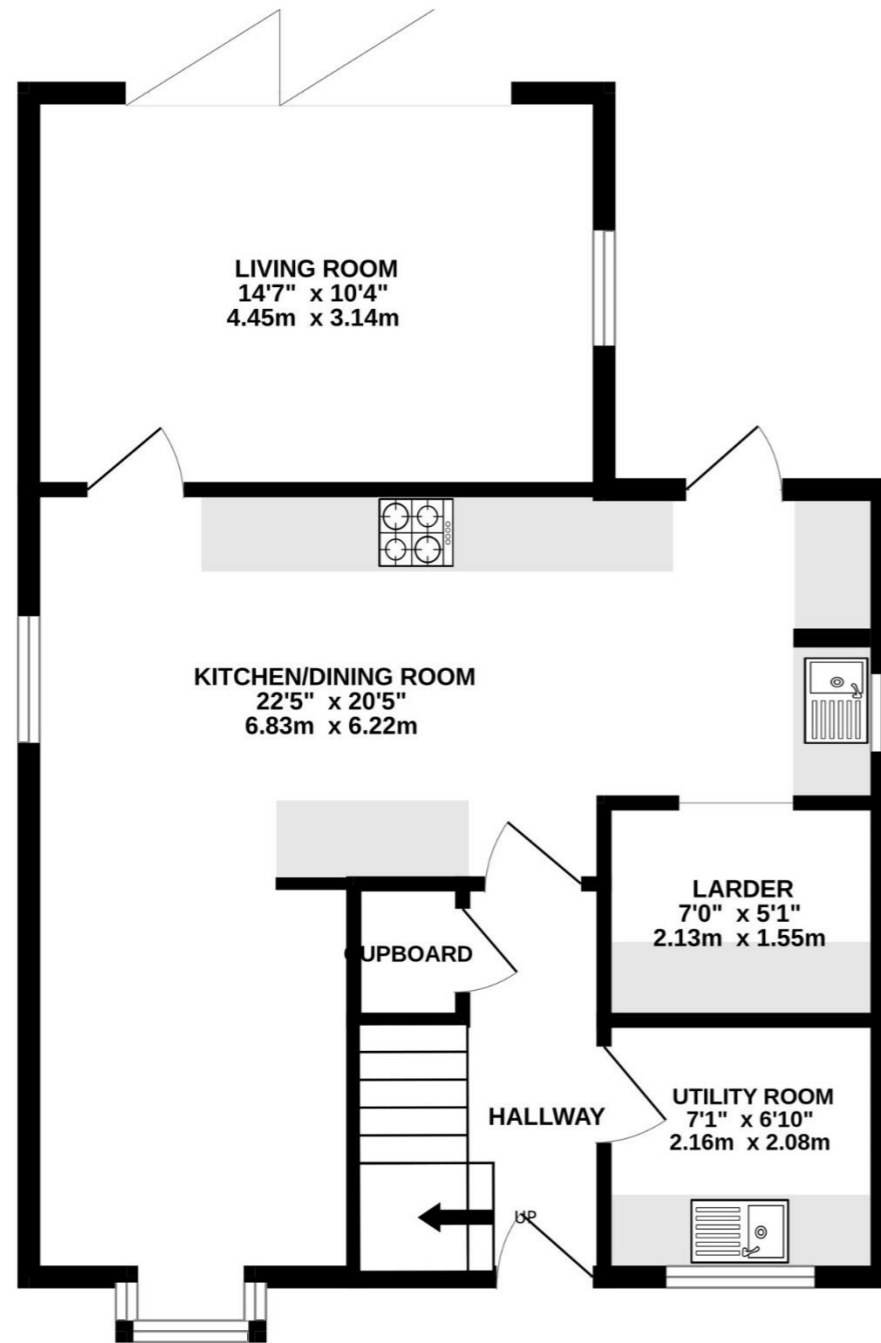
Located in a friendly neighbourhood, this home is close to local shops, schools, and parks, making it a convenient choice for everyday living. The property offers practical design and spacious layout.



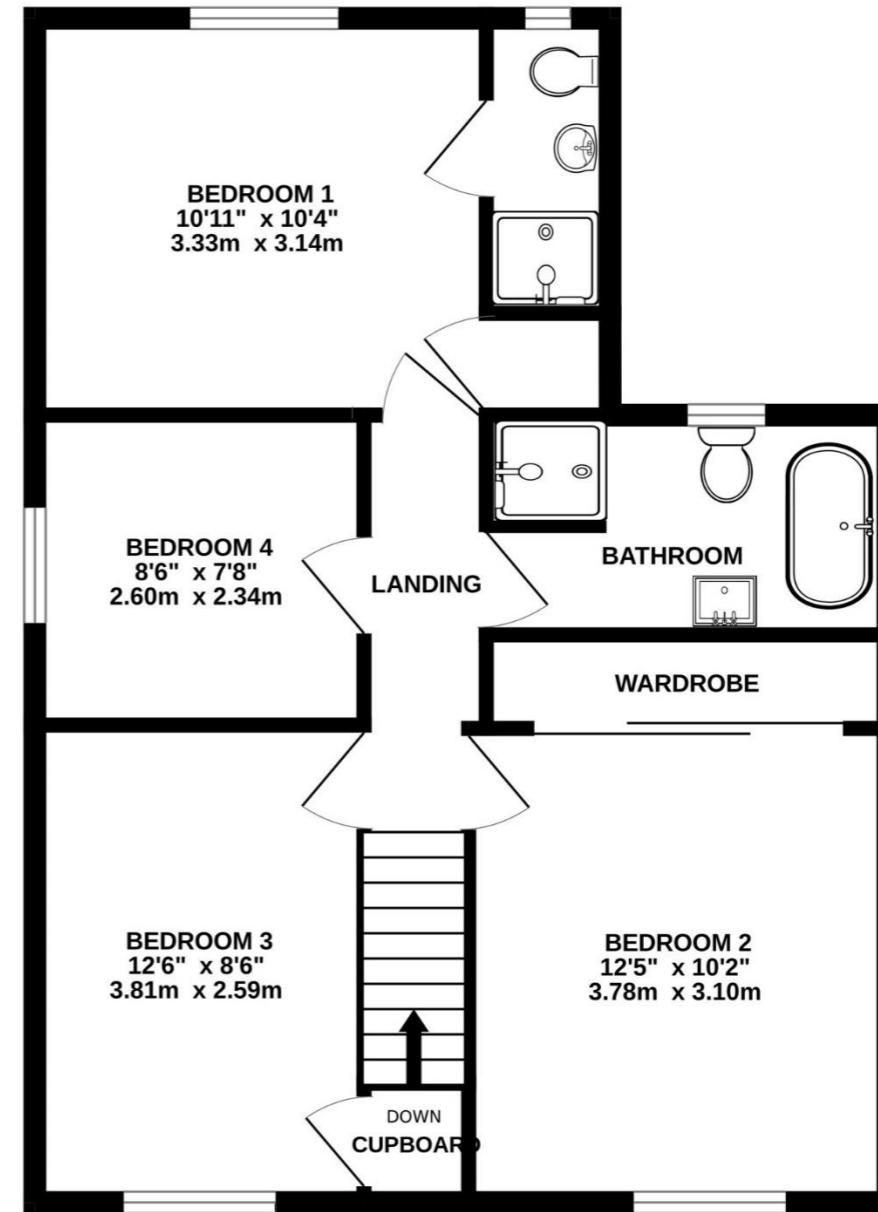
- Entrance Hall**
- Utility/Cloakroom 7'1" (2.16m) x 6'10" (2.08m)**
- Kitchen/Dining Room 22'5" (6.83m) x 20'5" (6.22m)**
- Living Room 14'7" (4.45m) x 10'4" (3.15m)**
- First Floor Landing**
- Bedroom 1 10'11" (3.33m) x 10'4" (3.15m)**
- En-Suite**
- Bedroom 2 12'5" (3.78m) x 10'2" (3.1m)**
- Bedroom 3 12'6" (3.81m) x 8'6" (2.59m)**
- Bedroom 4 8'6" (2.59m) x 7'8" (2.34m)**
- Bathroom**
- Garage**

£425,000 Freehold

GROUND FLOOR



1ST FLOOR



Whilst every attempt has been made to ensure the accuracy of the floorplan contained here, measurements of doors, windows, rooms and any other items are approximate and no responsibility is taken for any error, omission or mis-statement. This plan is for illustrative purposes only and should be used as such by any prospective purchaser. The services, systems and appliances shown have not been tested and no guarantee as to their operability or efficiency can be given.  
Made with Metropix ©2024

Please note Forum Sales & Lettings and their client give notice that:

1. They have no authority to make or give any representation or warranties in relations to the property. These particulars do not form part of any offer or contract and must not be relied upon as statements or representations of fact.
2. Any areas, common measurements or distances are approximate. The text, photographs and plans are for guidance only and are not necessarily comprehensive. It should not be assumed that the property has all necessary Planning, Building Regulations or other consents and Forum Sales and Lettings have not tested any services, equipment or facilities. Purchasers must satisfy themselves by inspection or otherwise.

EPC Rating - C

Viewing Arrangements - Strictly by appointment with Forum Sales & Lettings

15 Salisbury Street, Blandford Forum, Dorset, DT11 7AU

Tel: 01258 459600