



10 Diamond Way, Blandford Forum, Dorset, DT11 7WD





A stunning four bedroom semi detached property with garage conveniently located for Archbishop Wake School and town centre amenities.

The spacious accommodation is arranged over two floors and benefits from an extremely light and airy feel throughout.

From the reception hall, stairs lead to the first floor. There is a cloakroom with w.c. and wash hand basin. The sitting room is a most delightful space with full height bi-fold doors leading to the low maintenance rear garden.

The kitchen/diner runs the full length of the property, with a breakfast bar and space for 6 seater table. There is a range of floor and wall mounted units, sink, integrated appliances, space for American style fridge/ freezer, washing machine.

The master bedroom is located at the front of the property and has integrated wardrobes and an en-suite shower room. The second and third bedrooms are also double rooms with integrated wardrobes, and bedroom four is a comfortable single room.

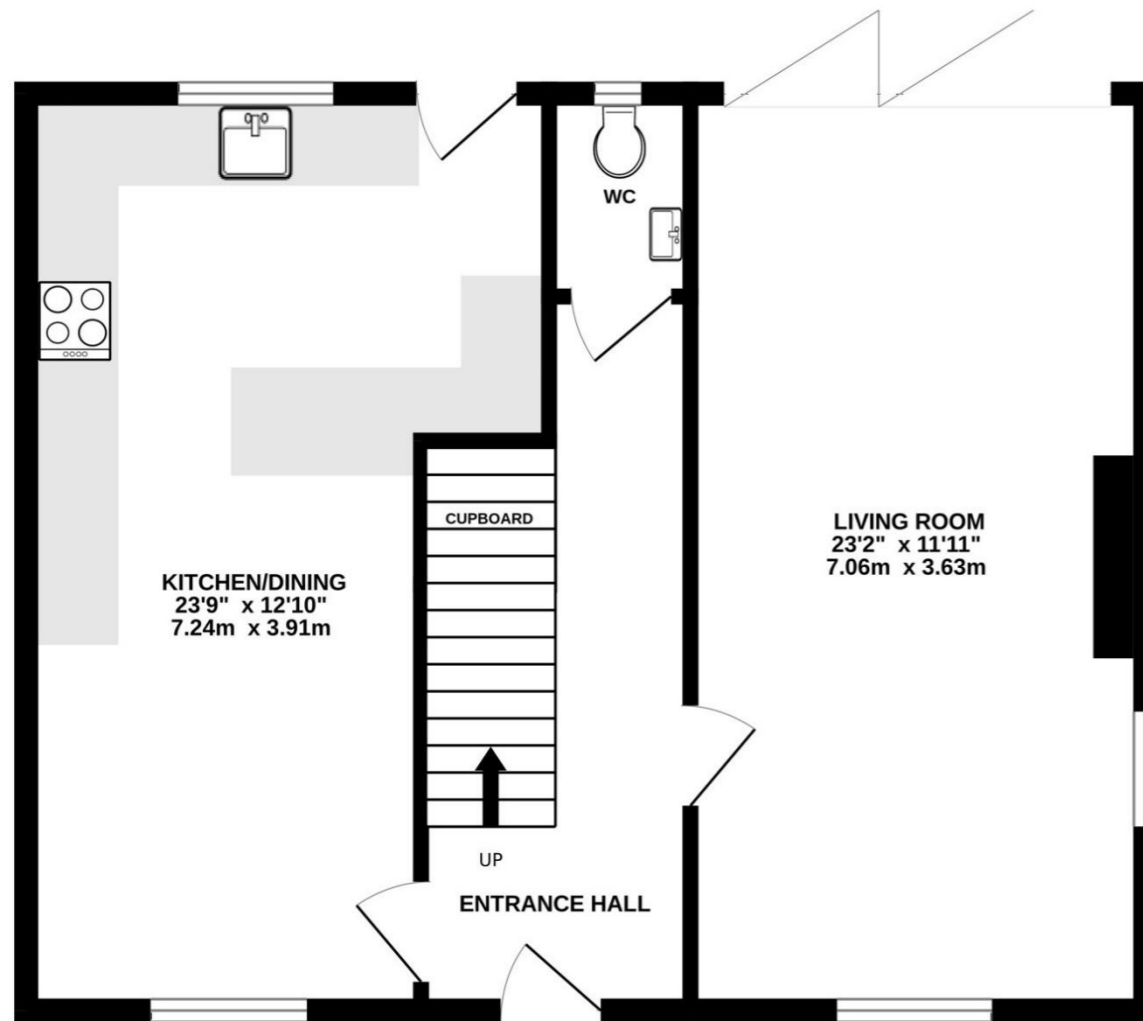
The rear garden is of split levels, offering a spacious area yet still being low maintenance.

The property has accessible parking to the front, with a single garage located to the rear with a parking space.

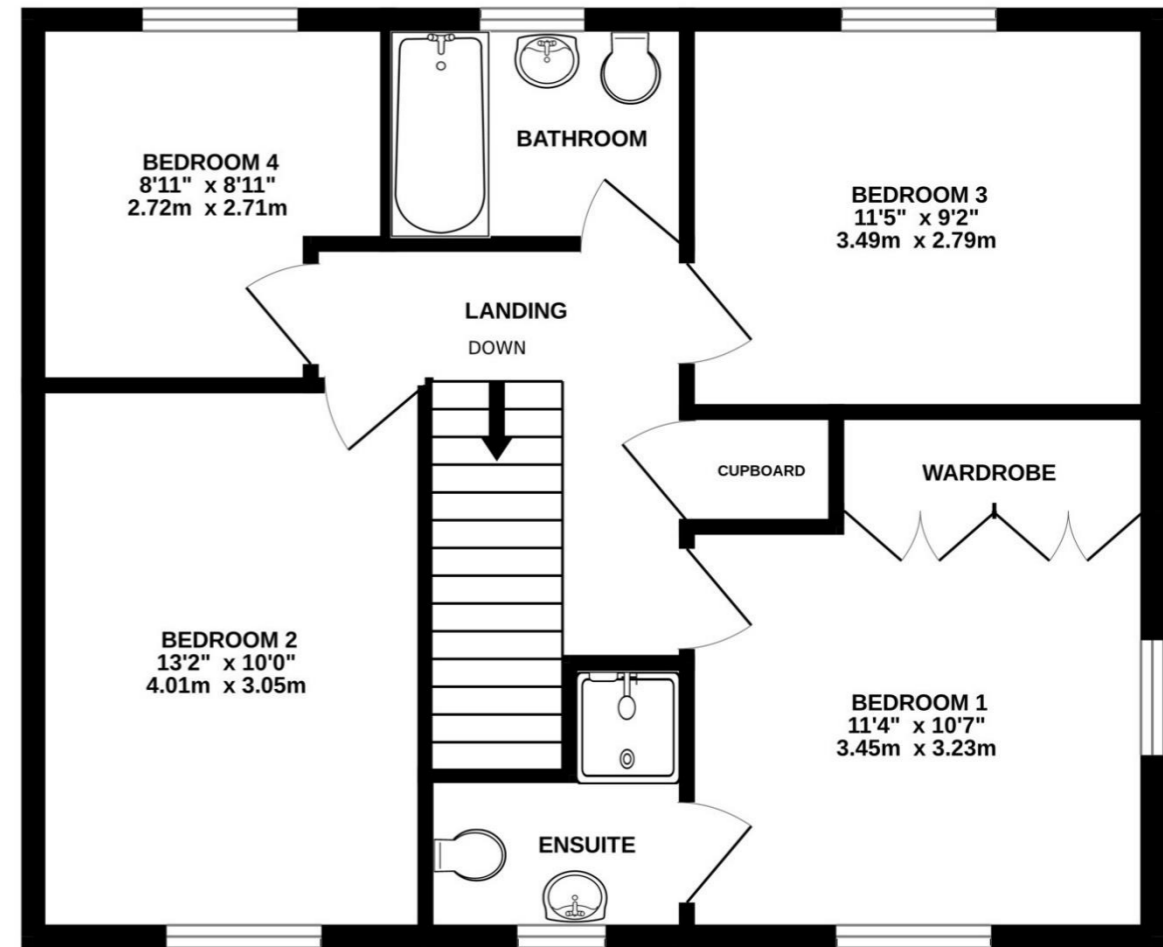


- Entrance Hall**
- Cloakroom**
- Kitchen/Dining Room 23'9" (7.24m) x 12'10" (3.91m) -**
- Living Room 23'2" (7.06m) x 11'11" (3.63m) -**
- Landing**
- Bedroom 1 11'4" (3.45m) x 10'7" (3.23m) -**
- En-Suite**
- Bedroom 2 13'2" (4.01m) x 10'0" (3.05m) -**
- Bedroom 3 11'5" (3.48m) x 9'2" (2.79m) -**
- Bedroom 4 8'11" (2.72m) x 8'11" (2.72m) -**
- Bathroom**
- Outside**
- Garage**

GROUND FLOOR
616 sq.ft. (57.2 sq.m.) approx.



1ST FLOOR
620 sq.ft. (57.6 sq.m.) approx.



TOTAL FLOOR AREA : 1236 sq.ft. (114.8 sq.m.) approx.

Whilst every attempt has been made to ensure the accuracy of the floorplan contained here, measurements of doors, windows, rooms and any other items are approximate and no responsibility is taken for any error, omission or mis-statement. This plan is for illustrative purposes only and should be used as such by any prospective purchaser. The services, systems and appliances shown have not been tested and no guarantee as to their operability or efficiency can be given.
Made with Metropix ©2024

Please note Forum Sales & Lettings and their client give notice that:

1. They have no authority to make or give any representation or warranties in relations to the property. These particulars do not form part of any offer or contract and must not be relied upon as statements or representations of fact.

2. Any areas, common measurements or distances are approximate. The text, photographs and plans are for guidance only and are not necessarily comprehensive. It should not be assumed that the property has all necessary Planning, Building Regulations or other consents and Forum Sales and Lettings have not tested any services, equipment or facilities. Purchasers must satisfy themselves by inspection or otherwise.

EPC Rating - C

Viewing Arrangements - Strictly by appointment with Forum Sales & Lettings

15 Salisbury Street, Blandford Forum, Dorset, DT11 7AU

Tel: 01258 459600