



3 Kingston Close, Blandford Forum, Dorset, DT11 7UQ



A modern 2 bedroom terrace house situated in a cul-de-sac on the very outskirts of the Estate, adjacent to the popular Trailway.

PORCH

LOUNGE

With stairs to first floor, electric meter fuse box cupboard, UPVC double glazed window to front aspect.

KITCHEN/DINING ROOM

Range of base units providing cupboard and drawer storage, with curved wood effect work surfaces, sink with mixer tap, space and plumbing for washing machine, dishwasher, 4 ring gas hob with electric cooker, deep fitted under stairs cupboard, wall mounted combi gas fired boiler serving domestic hot water and central heating, window overlooking rear garden.

FIRST FLOOR LANDING

Access to roof space.

BEDROOM 1

With 2 UPVC double glazed windows to front aspect, radiator, deep fitted cupboard, further high level double cupboard.

BEDROOM 2

UPVC double glazed window to rear aspect, radiator.

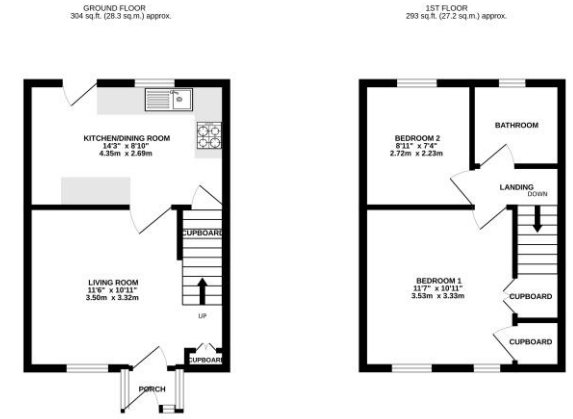
BATHROOM

White coloured suite comprising panelled bath with mixer tap, fitted shower above same, pedestal wash hand basin, low level WC, radiator, vinyl floor covering.

OUTSIDE

Fully enclosed rear garden bounded by fencing with patio area and majority of garden laid to lawn. Gate leads to rear access and in turn to the allocated parking space situated close by.

£250,000 Freehold



TOTAL FLOOR AREA: 597 sq.ft. (55.4 sq.m.) approx.
 All measurements are approximate and should be used as a guide only. Measurements are taken to the face of walls and doors. All dimensions are approximate and should be used as a guide only. All measurements are approximate and should be used as a guide only. All measurements are approximate and should be used as a guide only.

Please note Forum Sales & Lettings and their client give notice that:

1. They have no authority to make or give any representation or warranties in relations to the property. These particulars do not form part of any offer or contract and must not be relied upon as statements or representations of fact.
2. Any areas, common measurements or distances are approximate. The text, photographs and plans are for guidance only and are not necessarily comprehensive. It should not be assumed that the property has all necessary Planning, Building Regulations or other consents and Forum Sales and Lettings have not tested any services, equipment or facilities. Purchasers must satisfy themselves by inspection or otherwise.

EPC Rating - C

Viewing Arrangements - Strictly by appointment with Forum Sales & Lettings

15 Salisbury Street, Blandford Forum, Dorset, DT11 7AU

Tel: 01258 459600

