



Silver Birches, Bushes Road, Stourpaine, Dorset, DT11 8SU





**An exceptional six bedroom detached home situated on the outskirts of Blandford Forum, and finished to the highest of standards throughout.**

Step into luxury living with this exceptional six bedroom detached house, perfectly positioned on the outskirts of Blandford Forum. The property exudes elegance and style, with a double garage providing convenient parking and storage space.

As you enter, you are greeted by a spacious and inviting interior as well as a feature double stair case to the first floor.

Featuring six well-appointed bedrooms that offer comfort and privacy for all residents, with the three bedrooms to the first floor all offering en-suites, and bedrooms one and two enjoying balcony's overlooking the rear of the property.

The open-plan kitchen and living areas are designed for modern living, with high-end finishes and ample natural light creating a warm and welcoming atmosphere to the entirety of the ground floor.

A section of the ground floor accommodation has the potential to be used as a self contained annexe.

Step outside to discover the true beauty of this property, as it backs onto picturesque paddocks that offer a sense of peace and tranquillity. The landscaped garden provides a private oasis for relaxation whilst the vast decking area is ideal for outdoor entertaining, while the surrounding countryside offers endless opportunities for exploration and enjoyment.

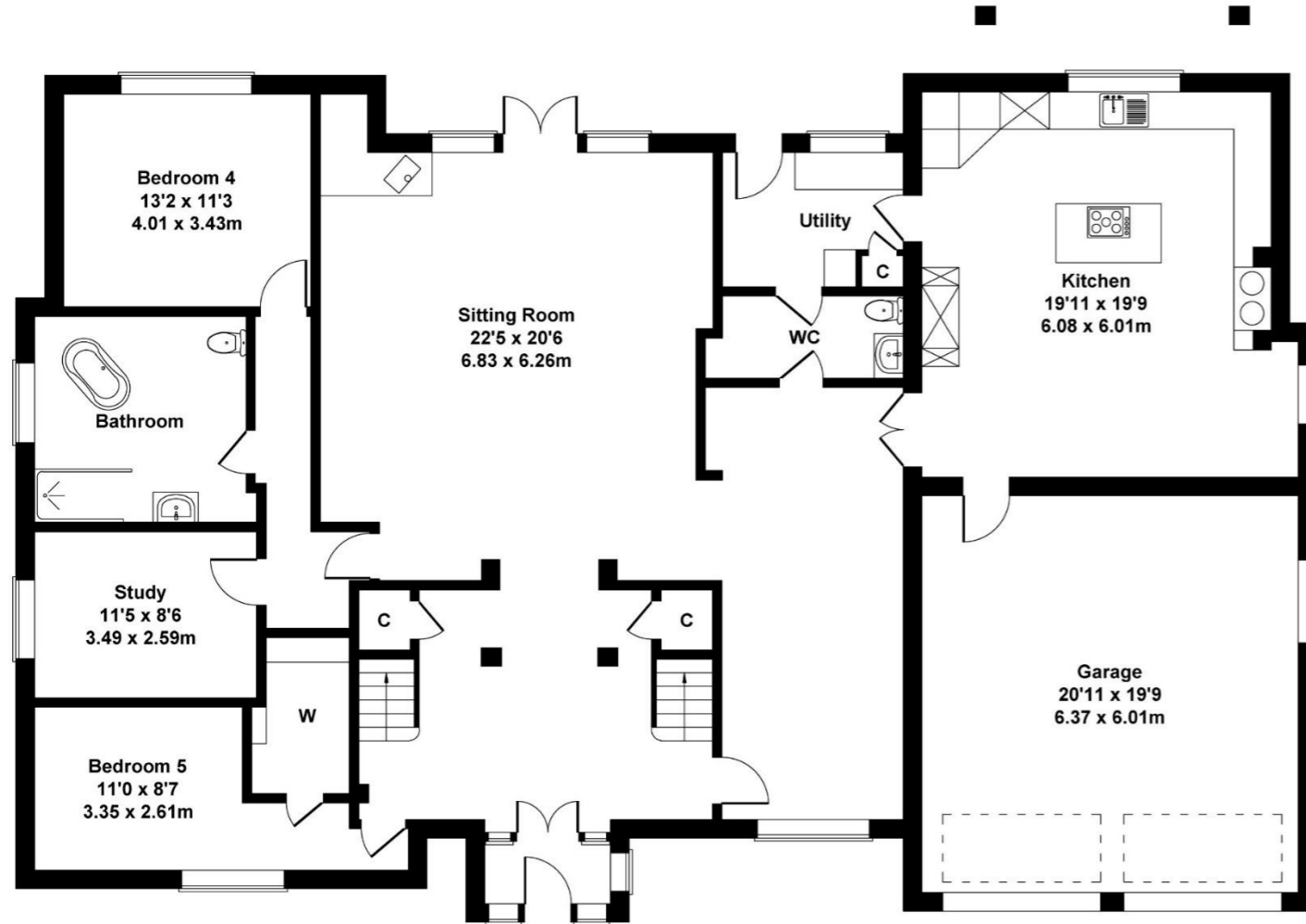
With easy access to the amenities of Blandford Forum and excellent transport links, this property combines the best of both worlds - a peaceful retreat with all the conveniences of modern living. Don't miss out on the chance to make this exceptional house your forever home.

Vendor Comment:

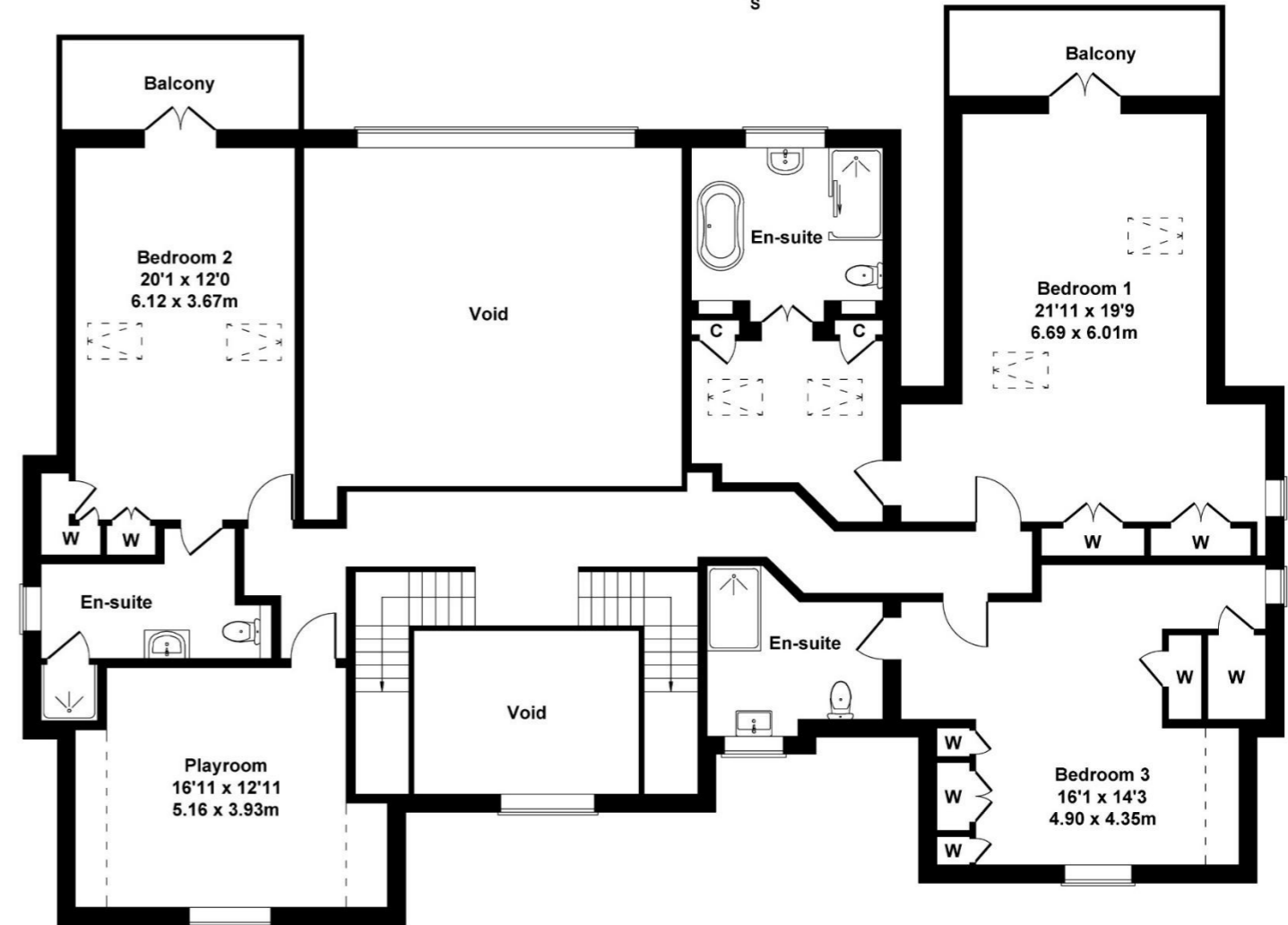
"We have been privileged to live here for 22 years. It is the perfect place to call home..... this home boasts sleek modern finishes and an abundance of natural light that dances through the generous windows. With space for everyone, this property has everything you need to make memories that will last a lifetime. The garden is a treasure-trove, a true haven for birds, butterflies and of course - you! While savouring your morning coffee on the balcony nestled amongst the trees you'll never want to leave."



**Bushes Road**  
 Approximate Gross Internal Area  
 4219 sq ft - 392 sq m  
 (Including Garage / Excluding Void)



**GROUND FLOOR**



**FIRST FLOOR**

Not to Scale. Produced by The Plan Portal 2024  
 For Illustrative Purposes Only.

Please note Forum Sales & Lettings and their client give notice that:

1. They have no authority to make or give any representation or warranties in relations to the property. These particulars do not form part of any offer or contract and must not be relied upon as statements or representations of fact.

2. Any areas, common measurements or distances are approximate. The text, photographs and plans are for guidance only and are not necessarily comprehensive. It should not be assumed that the property has all necessary Planning, Building Regulations or other consents and Forum Sales and Lettings have not tested any services, equipment or facilities. Purchasers must satisfy themselves by inspection or otherwise.

EPC Rating - C

Viewing Arrangements - Strictly by appointment with Forum Sales & Lettings

15 Salisbury Street, Blandford Forum, Dorset, DT11 7AU

Tel: 01258 459600

