



1 The Mount, Blandford Forum, Dorset, DT11 7PJ





A superbly presented three bedroom semi-detached house, forming part of this select cul-de-sac located on the fringe of the town centre.

1 The Mount is a well presented three bedroom semi-detached house, offering flexible accommodation over two floors.

Upon entering the property you are greeted into the entrance hall, with stairs to first floor and access to all ground floor rooms.

The newly fitted kitchen has a large window overlooking the front garden, with a range of base and wall units providing cupboard and drawer storage, 4 ring gas hob, integral dishwasher, 1 1/2 bowl drainer sink with mixer tap, and space for a dining table.

The lounge has a window overlooking rear garden and French doors to same, further UPVC window to side aspect.

On the first floor there are three double bedrooms, with bedroom one overlooking the cul-de-sac to the front and bedrooms two and three overlooking the rear.

The family bathroom comprises a panelled bath, low level WC, wash hand basin and a separate shower enclosure. Obscured glazed window to front aspect.

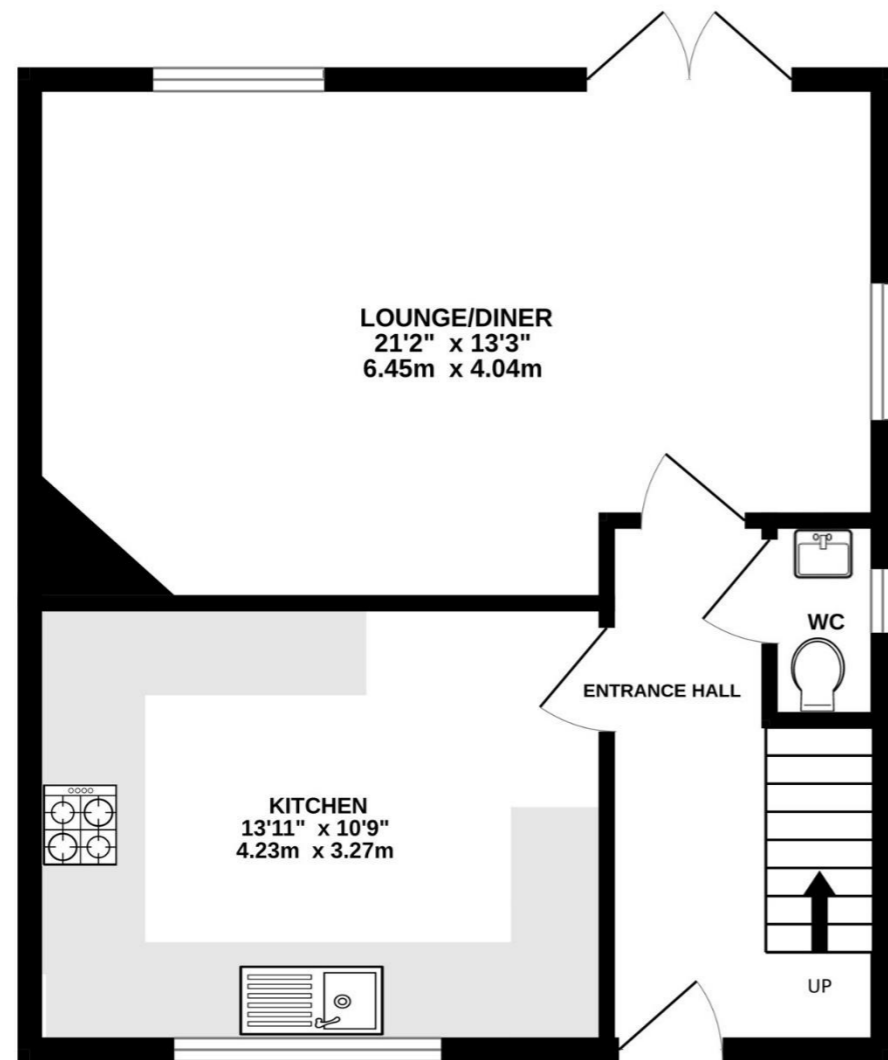
Front garden laid to lawn with paved steps and decorative wrought iron railings leading to raised area of garden comprising shrub border with matching paved path extending to side of property to the brick paved drive and DETACHED SINGLE GARAGE with up and over door, pitch tiled roof offering eaves storage, light and power.

Wrought iron gate adjacent leads to the rear garden bounded by fencing and backing on to wooded area. Main area of garden bounded by fencing and hedging comprising a circular lawn with brick edging and well stocked flower/shrub borders and timber decking area.

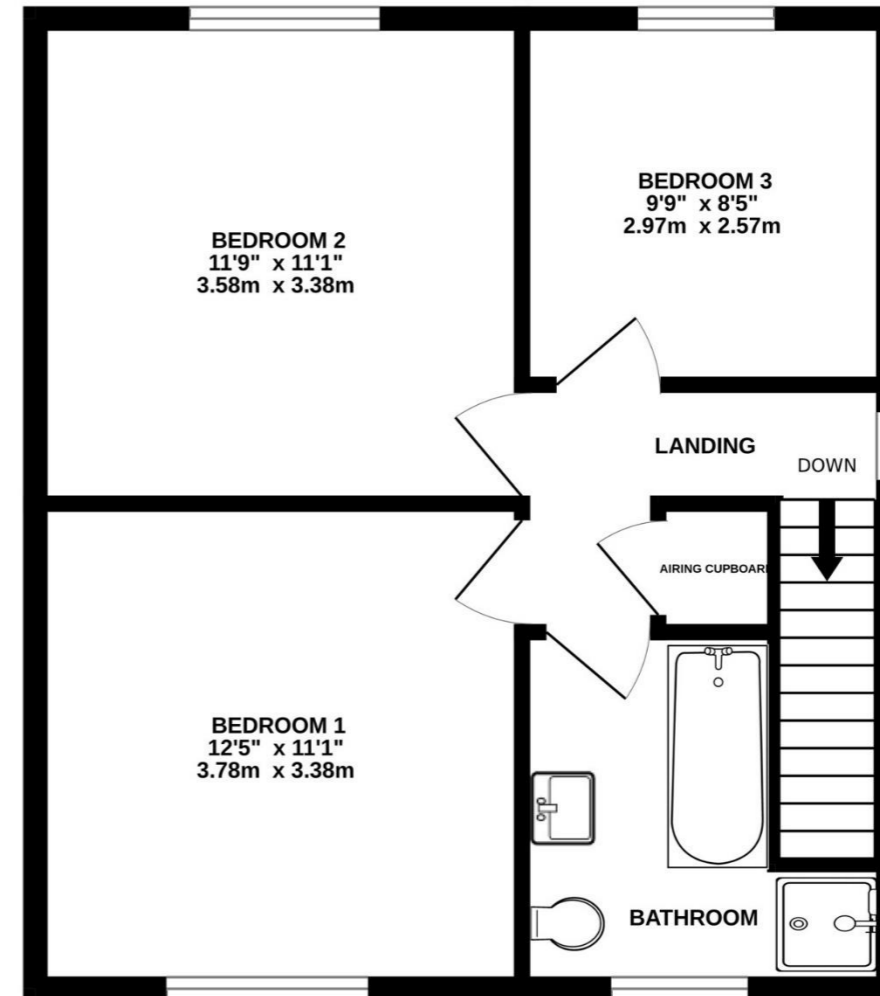


£365,000 Freehold

GROUND FLOOR



1ST FLOOR



Whilst every attempt has been made to ensure the accuracy of the floorplan contained here, measurements of doors, windows, rooms and any other items are approximate and no responsibility is taken for any error, omission or mis-statement. This plan is for illustrative purposes only and should be used as such by any prospective purchaser. The services, systems and appliances shown have not been tested and no guarantee as to their operability or efficiency can be given.
Made with Metropix ©2024

Please note Forum Sales & Lettings and their client give notice that:

1. They have no authority to make or give any representation or warranties in relations to the property. These particulars do not form part of any offer or contract and must not be relied upon as statements or representations of fact.

2. Any areas, common measurements or distances are approximate. The text, photographs and plans are for guidance only and are not necessarily comprehensive. It should not be assumed that the property has all necessary Planning, Building Regulations or other consents and Forum Sales and Lettings have not tested any services, equipment or facilities. Purchasers must satisfy themselves by inspection or otherwise.

EPC Rating - TBC

Viewing Arrangements - Strictly by appointment with Forum Sales & Lettings

15 Salisbury Street, Blandford Forum, Dorset, DT11 7AU

Tel: 01258 459600