



73 Alner Road, Blandford Forum, Dorset, DT11 7FJ



A Spacious 2 Bedroom Apartment Located In This Popular Development On The Outskirts Of The Town. The Property Benefits From Gas Central Heating, Allocated Parking & Small Outside Communal Area

Communal Entrance - Communal door (shared by two apartments) with stairs leading to the apartments private entrance on the first floor.

Hallway - Storage cupboard, telephone point, communal door intercom, radiator

Living/Dining Room 13'8" (4.17m) x 18'10" (5.74m)- Windows to front and side aspect, TV point, telephone point, 2 radiators

Kitchen 9'2" (2.79m) x 7'2" (2.18m)- A range of modern white fronted base and wall units providing cupboards and drawer storage, space for fridge freezer, integrated washer/dryer, integrated electric oven with built-in four ring gas hob and extractor hood above, cupboard housing gas boiler, vinyl flooring. circular window to rear aspect

Bedroom 1 11'5" (3.48m) x 13'1" (3.99m)- Window to front aspect, built-in wardrobe, radiator, telephone point

Bedroom 2 9'4" (2.84m) x 9'7" (2.92m)- Window to rear aspect, radiator

Bathroom - Modern suite comprising panelled bath, separate shower enclosure, vanity wash hand basin, low level WC, radiator, tiled splash-backs, tiled flooring

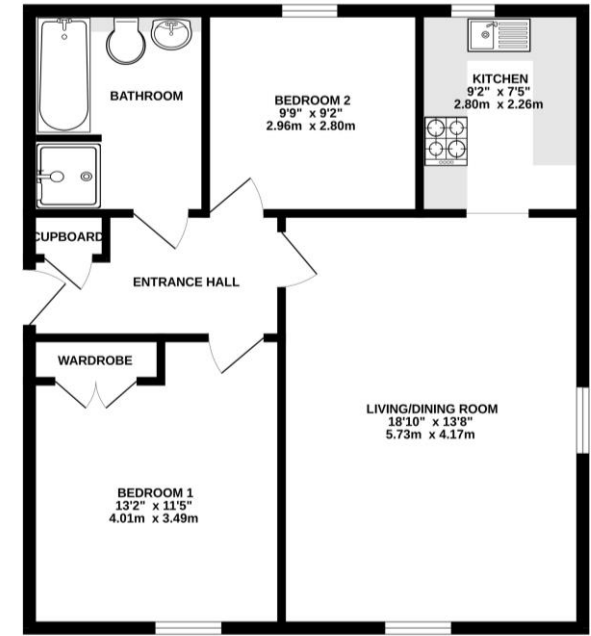
Outside - Allocated parking for two cars (behind one another), small communal outside area laid to lawn, nearby private storage shed and bin store.

Lease - 125 years from 1st January 2008

Ground Rent - £250.00 PA

Service Charge - £893.30 PA

£205,000 Leasehold



Whilst every attempt has been made to ensure the accuracy of the description contained here, measurements of doors, windows, rooms and any other items are approximate and no responsibility is taken for any error, omission or mis-statement. This plan is for illustrative purposes only and should not be used as such by any prospective purchaser. The services, systems and appliances shown have not been tested and no guarantee as to their operability or efficiency can be given. Made with Metropix ©2024

Please note Forum Sales & Lettings and their client give notice that:

1. They have no authority to make or give any representation or warranties in relations to the property. These particulars do not form part of any offer or contract and must not be relied upon as statements or representations of fact.
2. Any areas, common measurements or distances are approximate. The text, photographs and plans are for guidance only and are not necessarily comprehensive. It should not be assumed that the property has all necessary Planning, Building Regulations or other consents and Forum Sales and Lettings have not tested any services, equipment or facilities. Purchasers must satisfy themselves by inspection or otherwise.

EPC Rating - B

Viewing Arrangements - Strictly by appointment with Forum Sales & Lettings

15 Salisbury Street, Blandford Forum, Dorset, DT11 7AU

Tel: 01258 459600

