

HADLEIGH
RESIDENTIAL



HOWITT ROAD, **NW3**

£2,950 PCM

STYLISH INTERIORS THROUGHOUT | TWO GENEROUSLY PROPORTIONED BEDROOMS | 693 SQ. FT. | SOLID WOOD FLOORS THROUGHOUT | TWO LUXURY BATHROOMS | MODERN KITCHEN | EXCELLENT LOCATION

For clarification, we wish to inform prospective tenants that we have prepared these particulars as a general guide. We have not carried out a detailed survey, nor tested the services, appliances and specific fittings. Room sizes should not be relied upon for carpets and furnishings. If there are any important matters which are likely to affect your decision, please contact us before viewing the property.

HADLEIGH RESIDENTIAL
19 BELSIZE GROVE, LONDON, NW3 4TX
020 7722 9799

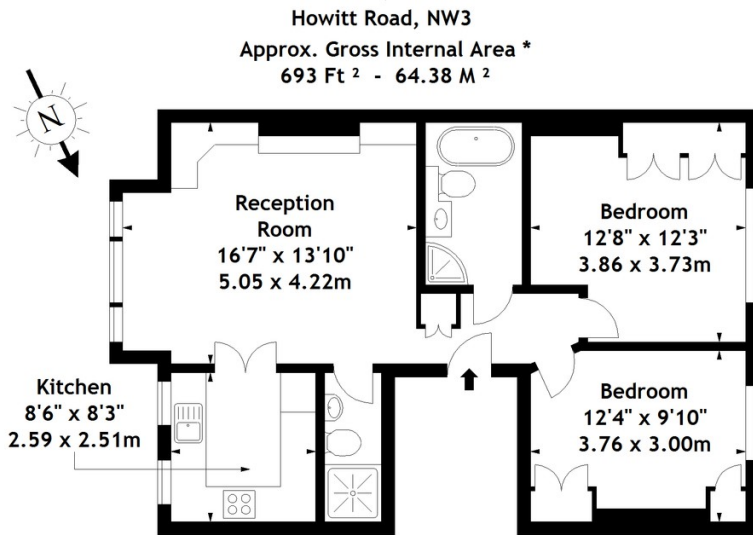
PROPERTY@HADLEIGH.CO.UK | WWW.HADLEIGH.CO.UK

DESCRIPTION

An extremely well presented two bedroom apartment occupying the first floor of this classic period conversion in an enviable position in the heart of Belsize Park. The apartment is renovated and benefits from wooden floors and stylish yet classic interiors throughout comprising of a lovely bay fronted reception room with feature brick fireplace and fitted storage, separate fitted kitchen, two generously proportioned bedrooms with fitted wardrobes, bathroom with beautiful claw foot roll top bath and separate shower cubicle and additional guest shower room with WC.

Offered unfurnished and available from 12th October.

ENERGY EFFICIENCY RATING C.



First Floor

Illustration For Identification Purposes Only. Not To Scale

* As Defined by RICS - Code of Measuring Practice

© International Floorplans.

Tel 0094 115 345958

www.ifpl.lk