

Kelso

Call 01573 400399

CULLEN KILSHAW
SOLICITORS & ESTATE AGENTS

WWW.CULLENKILSHAW.COM



20/1 The Square, Kelso

TD5 7HH

Guide Price £135,000



Located in the heart of the historic town of Kelso with lovely views over the cobbled Square, this is a bright and airy first floor apartment. Successfully let for a number of years, the property would be ideal as a first time purchase, holiday let or ready to go rental investment. Boasting many attractive and original features, the accommodation comprises: Internal stairs, hall, lounge, kitchen, two double bedrooms and bathroom. Early viewing is an absolute must.



20/1 The Square, Kelso

TD5 7HH

Guide Price £135,000

Internal Stairs
Hall
Lounge
Kitchen
Two Double Bedrooms
Bathroom

Gas Central Heating
Single Glazing

On-Street Parking



Location

Kelso is one of the most attractive towns in the Scottish Borders, situated at the confluence of the Rivers Tweed and Teviot with its focal point being the Flemish-style Town Square. There are excellent facilities in Kelso including National Hunt Racing, Curling, Golf, Swimming, Rugby, Tennis, Cricket, Bowls and Fishing. Kelso lies approximately 43 miles south of Edinburgh, 25 miles west of Berwick-Upon-Tweed and 70 miles north of Newcastle-Upon-Tyne. The new Waverley rail link from Edinburgh to Tweedbank can be reached in around 30 minutes from Kelso.

Fixtures & Fittings

The sale shall include all carpets and floorcoverings, light fittings, kitchen fittings and bathroom fittings.

Services

Mains drainage, gas, water and electricity. Gas central heating.

EPC

TBC

Council Tax Band

B

Viewing

Strictly by appointment with the Selling Agent.

Entry

By mutual agreement.



Interested in this property?
Call 01573 400399

43 The Square,
Kelso, TD5 7HL
Phone: 01573 400399
Fax: 01573 400388
Email: kelso@cullenkilshaw.com

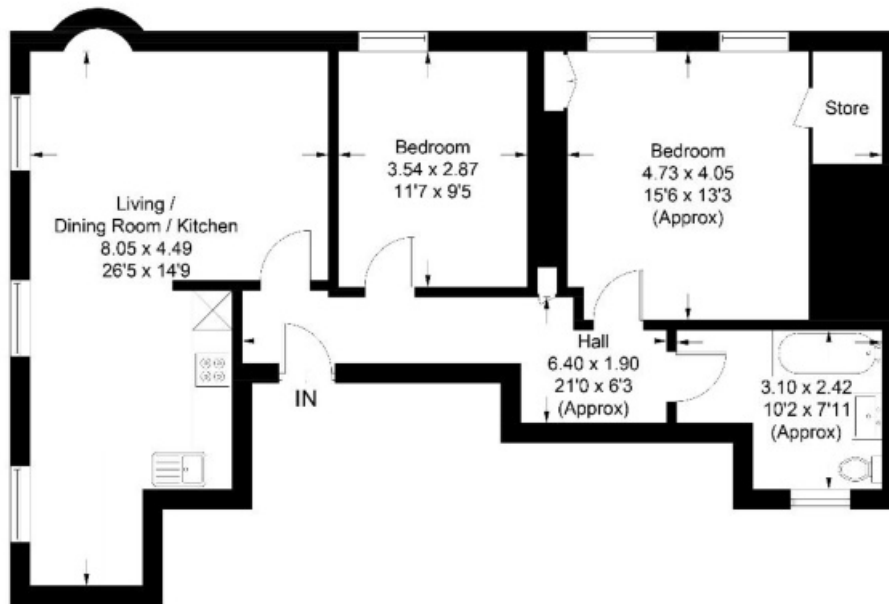
Opening Hours:
Monday to Friday: 9.00am to 5.00pm
Saturday: 9.00am to 12.00 noon

Also At:
Galashiels, Tel 01896 758 311
Jedburgh, Tel 01835 863 202
Hawick, Tel 01450 3723 36
Kelso, Tel 01573 400 399
Melrose, Tel 01896 822 796
Peebles, Tel 01721 723 999
Selkirk, Tel 01750 723 868
Langholm, Tel 013873 80482
Annan, Tel 01461 202 866/867



20/1 The Square, Kelso

Approximate Gross Internal Area = 75.9 sq m / 817 sq ft



First Floor

Illustration for identification purposes only, measurements are approximate, not to scale. floorplansUsketch.com © (ID1058845)

Full members of:



Whilst these particulars are prepared with care and are believed to be accurate neither the Selling Agent nor the vendor warrant the accuracy of the information contained herein and intending purchasers will be held to have satisfied themselves that the information given is correct.