





# 1 Rectory Lane, Cricklade, Wiltshire.

## DIRECTIONS

Please use the postcode SN6 6DB or call the office at any time for detailed directions from your location.

## SUMMARY

Grade II listed one bedroom cottage to rent situated just a stonethrow from the main High Street in Cricklade. This property benefits from a dual fuel woodburner, character features and a rear courtyard garden. Call now to view to avoid disappointment!!!

## PROPERTY

The ground floor comprises a good sized living room with a storage cupboard and dual fuel wood burner. A door leads through to the dining room which in turns leads into the kitchen which is fitted with a range of cupboards and drawers, freestanding cooker and plumbing space for white goods.. A spiral staircase leads to the first floor which houses the master bedroom which features built in wardrobes. The family bathroom comprises bath, wc and wash hand basin.

## GARDEN

The property has a rear courtyard which has a right of way over it, this is mainly laid to patio but does house a shed which is great for storage.

## LOCATION

The property is located off of a quiet part of the High Street of this ever popular town and is close to the many amenities it has to offer. Cricklade is a desirable Saxon Town with a wide range of facilities including public houses and local grocers and butchers whilst still offering easy access to the local road and rail network.

## VIEWING

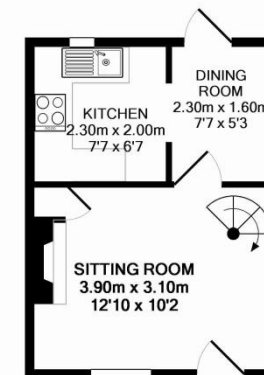
Viewing is available by appointment 7 days a week. Please call your local office to arrange.

## FEES

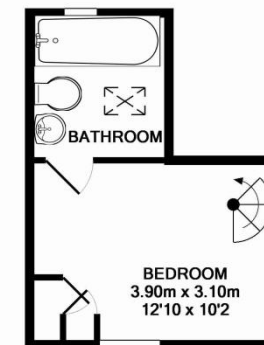
For a full scale of fees that may be payable, please see the full online listing, ask a member of the team, or visit the office for more information.

## AGENTS NOTE

We wish to inform prospective tenants that we have prepared these lettings particulars as a general guide. We have not carried out a survey, nor have we tested any services, appliances or any specific fittings at the property. Room sizes should not be relied upon for carpets and furnishings.

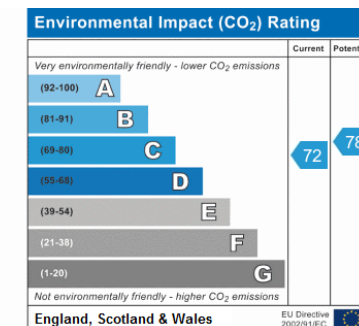
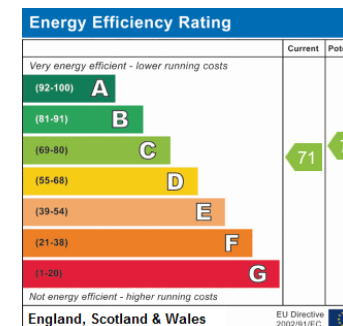


GROUND FLOOR



1ST FLOOR

Measurements are approximate. Not to scale. Illustrative purposes only  
Made with Metropix ©2015



01285 885555  
cirencester@cbslade.co.uk

01793 750793  
cricklade@cbslade.co.uk

[www.cbslade.co.uk](http://www.cbslade.co.uk)