





1 Horizon House, Longwood Court, Cirencester, Gloucestershire.

DIRECTIONS

Please use the postcode GL7 1YG or call the office at any time for detailed directions from your location.

SUMMARY

Spacious and high specification, ground floor apartment in desirable area, close to many local amenities. The accommodation offers two double bedrooms featuring fitted wardrobes, bathroom, and large open plan reception room with a kitchen providing fitted appliances and double doors to a small paved area. Further benefits include an allocated parking space and no onward chain.

PROPERTY

The apartment benefits from independent access or through the communal entrance. This then leads into the entrance hall, providing a useful storage cupboard and access to each of the primary rooms. The main reception room is a generous and flexible space benefiting from double doors to a small area of patio, and has a kitchen that has been fitted with a range of cupboards and drawers, sink with drainer, electric hob with hood, and features a range of integrated appliances including fridge and freezer, washer/dryer and a dishwasher. There are two generous bedrooms which both offer built in wardrobe space. The accommodation is completed by a bathroom which houses an airing cupboard and comprises bath with shower over, heated towel rail, wc and wash hand basin.

OUTSIDE

The property provides one allocated parking space. There is a small patio area outside the doors from the reception room.

LOCATION

The property is situated within a converted development of new apartments positioned on the edge of this desirable town. There is a range of local amenities nearby, whilst Cirencester offers its residents a wide range of further facilities and provides easy access to the nearby road and rail network.

VIEWING

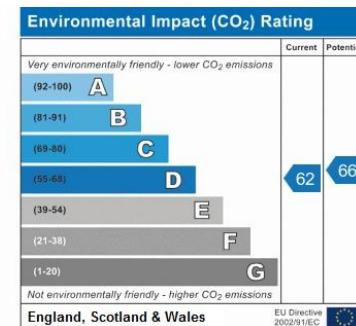
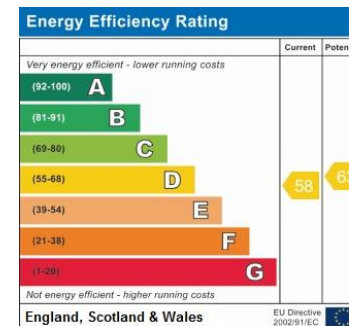
Viewing is available by appointment 7 days a week. Please call your local office to arrange.

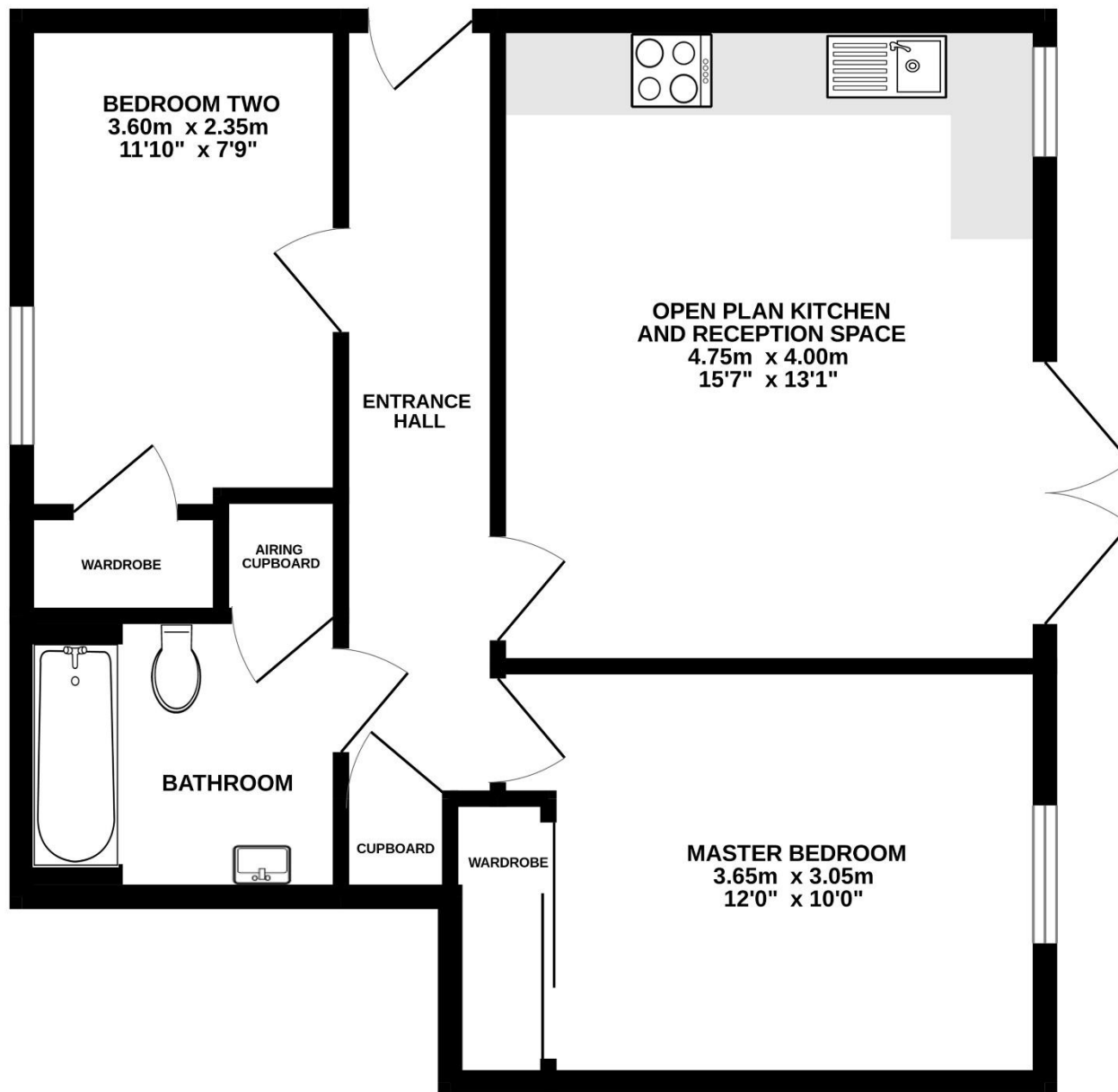
MORTGAGE

We advise potential purchasers to speak to Financial Associates to discuss their financial requirements. Call us for further information.

AGENTS NOTE

We wish to inform prospective purchasers that we have prepared these sales particulars as a general guide. We have not carried out a survey, nor have we tested any services, appliances or any specific fittings at the property. Room sizes should not be relied upon for carpets and furnishings.





Whilst every attempt has been made to ensure the accuracy of the floorplan contained here, measurements of doors, windows, rooms and any other items are approximate and no responsibility is taken for any error, omission or mis-statement. This plan is for illustrative purposes only and should be used as such by any prospective purchaser. The services, systems and appliances shown have not been tested and no guarantee as to their operability or efficiency can be given.
Made with Metropix ©2025



