





WV43, Willow View, Cirencester, Gloucestershire.

### **DIRECTIONS**

Please use the postcode GL7 5UQ or call the office at any time for detailed directions from your location.

### **SUMMARY**

Offering an extended area of southerly facing decking, this high specification holiday home offers spacious and well presented accommodation in a desirable part of this sought after holiday park. Benefits include parking, a kitchen fitted with appliances including a washing machine and dishwasher, ensuite shower room, and easy access to the many leisure facilities both on site, and throughout the rest of the Cotswold Lakes

### **PROPERTY**

The property is accessed into a well equipped kitchen/dining room with a range of storage and built in appliances which includes a dishwasher. It is open to the triple aspect living room with feature fireplace and doors out to the extended area of decking.

An inner hall provides access to the two bedrooms and family shower room which is fitted with a suite comprising shower, wc, and wash hand basin. Whilst the second bedroom benefits from a useful built in wardrobe, the master bedroom has a walk in wardrobe and ensuite shower room.

### **GARDENS**

The property benefits from its own adjoining parking space as well as further parking nearby. The property is fitted with an extended area of southerly facing decking. It also takes advantage of this luxurious development with plenty of communal gardens, as well as leisure amenities, to enjoy.

### **LOCATION**

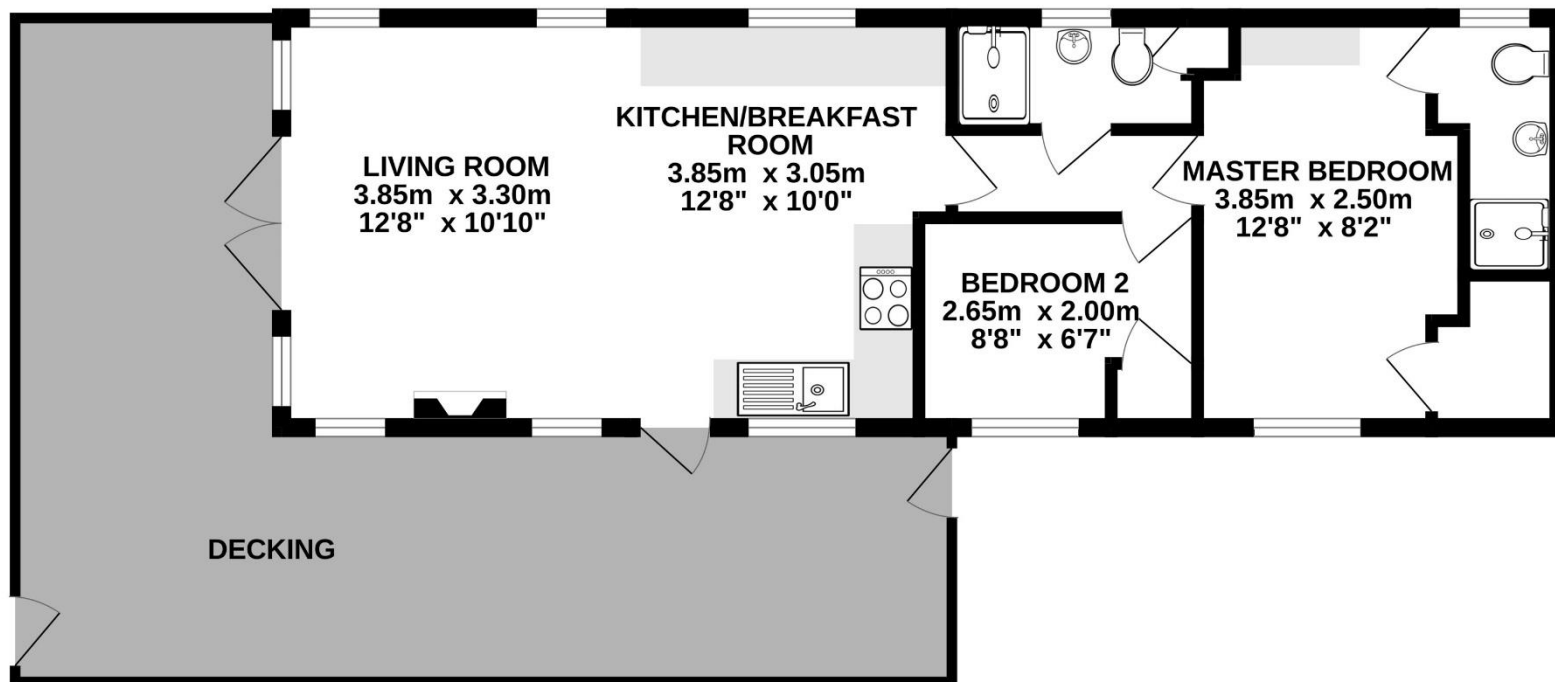
The property is located on the exclusive Cotswold Hoburne resort in the heart of the Cotswold Lakes. Facilities include an impressive entertainment complex which include children's play area, bar, and restaurant, indoor and outdoor heated pools, boating and fishing lakes, adventure golf, tennis court, multi-use games area, adventure playground, amusement arcade, shop, and much more! It is located on the edge of South Cerney which is an attractive village with a further shops and popular pubs and is within easy reach of the many beautiful walks and leisure facilities that the Cotswold Lakes have to offer.

### **VIEWING**

Viewing is available by appointment 7 days a week. Please call your local office to arrange.

### **AGENTS NOTE**

We wish to inform prospective purchasers that we have prepared these sales particulars as a general guide. We have not carried out a survey, nor have we tested any services, appliances or any specific fittings at the property. Room sizes should not be relied upon for carpets and furnishings.



Whilst every attempt has been made to ensure the accuracy of the floorplan contained here, measurements of doors, windows, rooms and any other items are approximate and no responsibility is taken for any error, omission or mis-statement. This plan is for illustrative purposes only and should be used as such by any prospective purchaser. The services, systems and appliances shown have not been tested and no guarantee as to their operability or efficiency can be given.  
Made with Metropix ©2024



