



17 Greenacres Park, Meysey Hampton,
Cirencester, Gloucestershire.



DIRECTIONS

Please use the postcode GL7 5JH or call the office at any time for detailed directions from your location.

SUMMARY

Detached park home in a generous plot with far reaching countryside views in this sought after development for the 45 and overs. The accommodation includes kitchen, reception room, two bedrooms, and a shower room and the property would benefit from some degree of updating throughout. It is convenient for the nearby towns of Fairford and Cirencester and offered for sale with no onward chain.

PROPERTY

The property is accessed into the kitchen which is fitted with a range of storage and appliance space including a large cupboard with hot water tank. There is an opening into the large dual aspect living room which has space for separate sitting and dining areas. A door leads through to the inner hall which provides access to the two, good size bedrooms, as well as the bathroom. This has been refitted and so now has a suite comprising shower, wc, and wash hand basin.



GARDENS

The property benefits from good size gardens to the side and rear which have far reaching views over local farmland. It is mainly laid to lawn with areas of patio. There is nearby parking provided for all residents and a garage can be rented, when available.

LOCATION

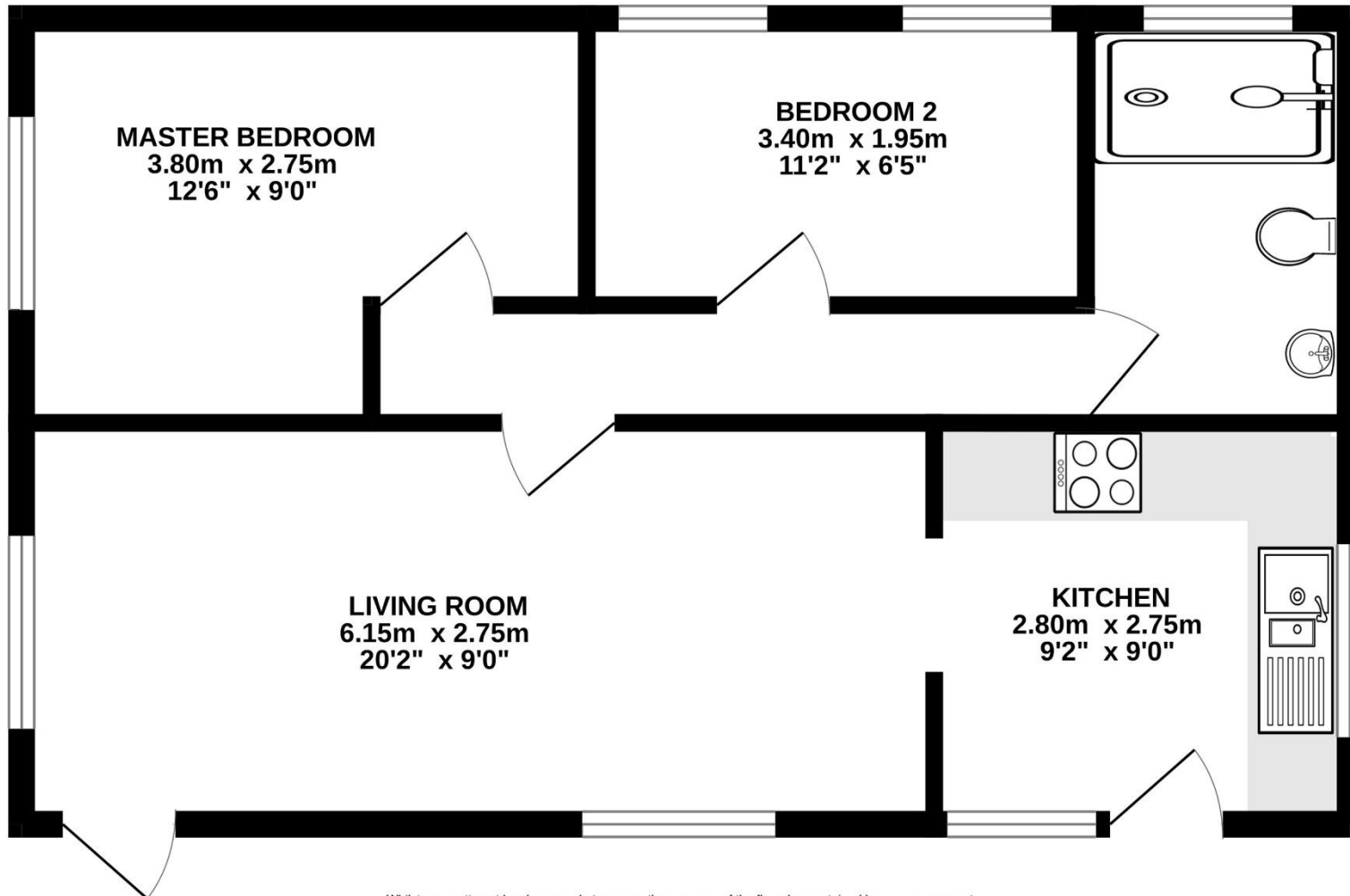
Greenacres Park is a development for the over 45's which combines an enviable rural location with excellent road links to the nearby towns of Cirencester and Fairford. This desirable village location is in the heart of the Cotswold Lakes and benefits from a range of nearby facilities.

VIEWING

Viewing is available by appointment 7 days a week. Please call your local office to arrange.

AGENTS NOTE

We wish to inform prospective purchasers that we have prepared these sales particulars as a general guide. We have not carried out a survey, nor have we tested any services, appliances or any specific fittings at the property. Room sizes should not be relied upon for carpets and furnishings.



Whilst every attempt has been made to ensure the accuracy of the floorplan contained here, measurements of doors, windows, rooms and any other items are approximate and no responsibility is taken for any error, omission or mis-statement. This plan is for illustrative purposes only and should be used as such by any prospective purchaser. The services, systems and appliances shown have not been tested and no guarantee as to their operability or efficiency can be given.
Made with Metropix ©2024



