





## 58 Willow View, Cotswold Hoburne, Cirencester, Gloucestershire.

### **DIRECTIONS**

Please use the postcode GL7 5UQ or call the office at any time for detailed directions from your location.

### **SUMMARY**

Detached two bedroom holiday located in the heart of this desirable development with a range of leisure facilities both on site, and in the wider Cotswold Water Park beyond. The accommodation includes living room, kitchen, dining area, two bedrooms, ensuite, and shower room whilst further benefits include a private parking space next to the property and lower than average site fees.

### **PROPERTY**

The property is accessed into a good size kitchen/breakfast room. There is plenty of storage, built in appliances, and room for a dining table. It is open to the triple aspect living room with feature fireplace and double doors leading out to the decking.

An inner hall leads through to the two good size bedrooms and the shower room which is fitted with a suite comprising shower, wc, and wash hand basin. Both bedrooms benefit from built in storage whilst the master bedroom also has an ensuite fitted with a wc and wash hand basin.

### **GARDENS**

The property benefits from a private parking space next to the property. There is a large deck which looks out over the green. It also takes advantage of this luxurious development with plenty of communal gardens, as well as leisure amenities, to enjoy.

### **LOCATION**

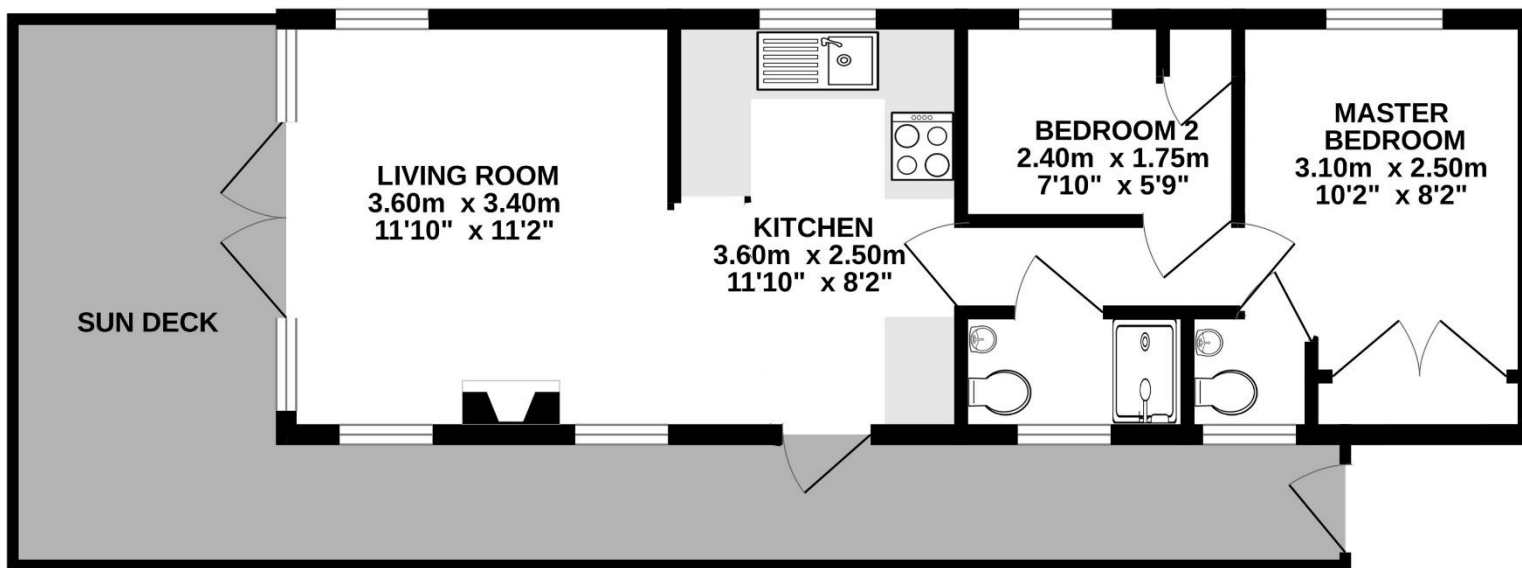
The property is located on the exclusive Cotswold Hoburne resort in the heart of the Cotswold Water Park. This particular property is in a desirable spot just moments from the facilities which include an impressive entertainment complex which include cafe, bar, and restaurant, indoor and outdoor heated pools, boating and fishing lakes, adventure golf, tennis court, multi-use games area, adventure playground, amusement arcade, shop, and much more! It is located on the edge of South Cerney which is an attractive village with a further shops and popular pubs and is within easy reach of the many beautiful walks and leisure facilities that the Cotswold Water Park has to offer.

### **VIEWING**

Viewing is available by appointment 7 days a week. Please call your local office to arrange.

### **AGENTS NOTE**

We wish to inform prospective purchasers that we have prepared these sales particulars as a general guide. We have not carried out a survey, nor have we tested any services, appliances or any specific fittings at the property. Room sizes should not be relied upon for carpets and furnishings.



Whilst every attempt has been made to ensure the accuracy of the floorplan contained here, measurements of doors, windows, rooms and any other items are approximate and no responsibility is taken for any error, omission or mis-statement. This plan is for illustrative purposes only and should be used as such by any prospective purchaser. The services, systems and appliances shown have not been tested and no guarantee as to their operability or efficiency can be given.  
 Made with Metropix ©2024



