





8 Greenwood Court, Sandbourne Road, Swindon, Wiltshire.

DIRECTIONS

Please use the postcode SN25 1RE or call the office at any time for detailed directions from your location.

SUMMARY

Situated in this popular residential area within easy reach of many local amenities, is this spacious two bedroom apartment. The accommodation includes large living room, kitchen with a range of storage and appliances, master bedroom with Juliet balcony and ensuite, further family bathroom, large entrance hall with storage. There is allocated parking.

PROPERTY

The communal entrance leads into a welcoming entrance hall with tiled floor and entry phone system. This leads into the inner hall with storage cupboard and doors to the principle rooms. There is a generous sized living room with an opening to the kitchen which is fitted with a range of cupboards and drawers with built in oven, hob and sink with drainer, as well as a fridge/freezer and washing machine. The master bedroom has a Juliet balcony and an ensuite shower room comprising of shower, wc and wash hand basin. There is a second bedroom and a family bathroom comprising of a bath with shower over, wc and wash hand basin.

GARDENS

There is allocated parking for one vehicle with plentiful visitor parking behind the apartment block or on street. There are no communal gardens but plenty of open green spaces nearby.

LOCATION

Haydon End is a modern purpose built residential location, located on the North outskirts of Swindon with its own local amenities including retail park and reputable schooling. There is excellent access to both Junction 15 and 16 of the M4 Motorway, A417, A419, A420 & the Great Western Hospital and Swindon Town Centre c.4 miles with mainline railway links to London Paddington and Bristol.

VIEWING

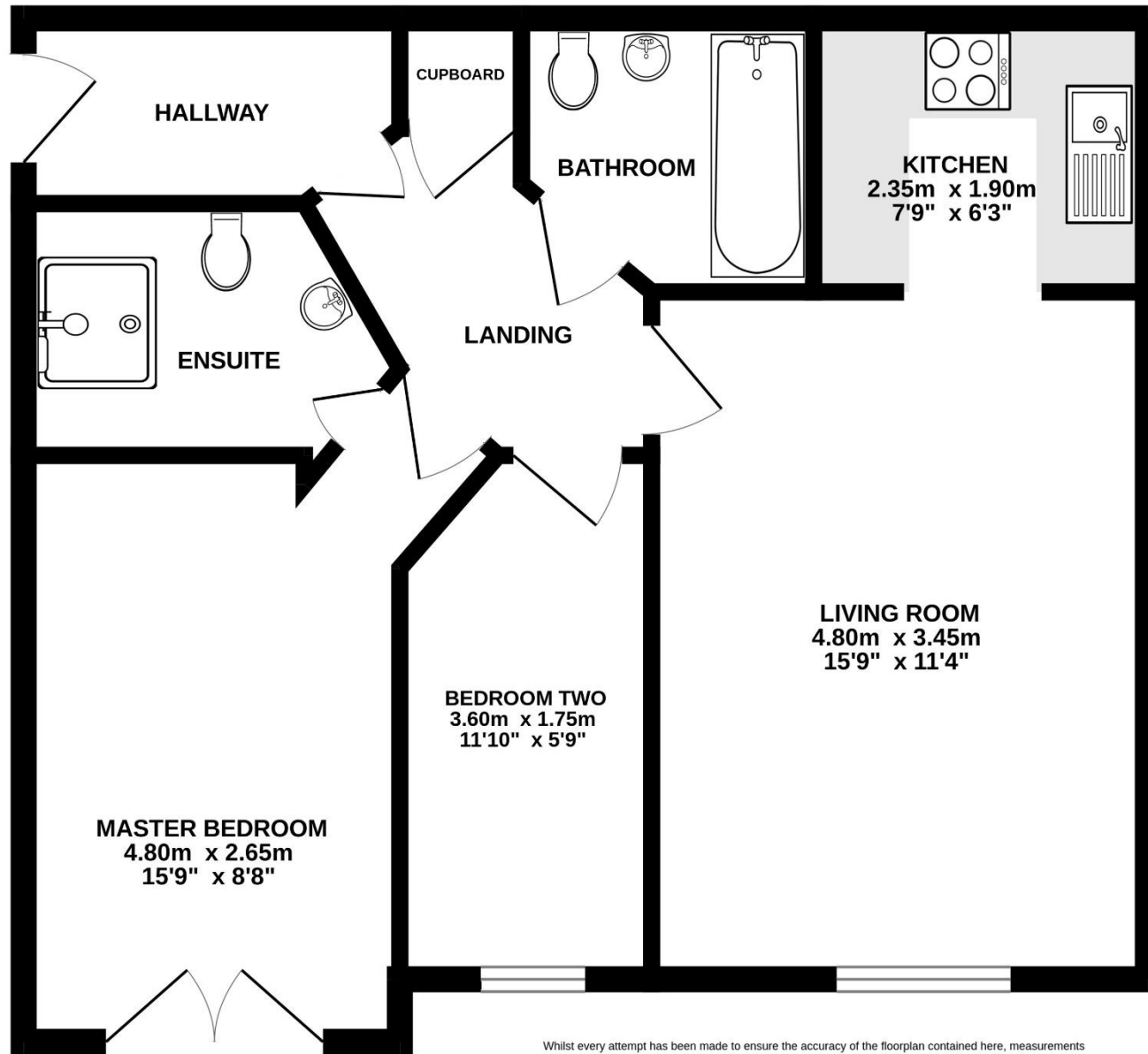
Viewing is available by appointment 7 days a week. Please call your local office to arrange.

FEES

For a full range of fees payable, please see the full online listing, our website, in our office, or speak to a member of the team.

AGENTS NOTE

We wish to inform prospective purchasers that we have prepared these sales particulars as a general guide. We have not carried out a survey, nor have we tested any services, appliances or any specific fittings at the property. Room sizes should not be relied upon for carpets and furnishings.



Whilst every attempt has been made to ensure the accuracy of the floorplan contained here, measurements of doors, windows, rooms and any other items are approximate and no responsibility is taken for any error, omission or mis-statement. This plan is for illustrative purposes only and should be used as such by any prospective purchaser. The services, systems and appliances shown have not been tested and no guarantee as to their operability or efficiency can be given.
 Made with Metropix ©2023

