







5 Greenacres Park,  
Meysay Hampton, Gloucestershire.

### **DIRECTIONS**

Please use the postcode GL7 5JH or call the office at any time for detailed directions from your location.

### **SUMMARY**

Set on this favoured development for the over 45's and overlooking a communal green, this spacious property has accommodation which includes two double bedrooms, shower room, inner hall, living room, kitchen, and entrance porch. There are gardens to three sides and parking available to the front.

### **PROPERTY**

The property is accessed via a useful entrance porch into the good size kitchen which has a range of storage and appliance space. This leads through to the large living room with fireplace and bay window. There is an inner hall which provides access to the two double bedrooms which both feature built in wardrobes, and the shower room which is fitted with a suite comprising shower cubicle, wc and wash hand basin.

### **GARDENS**

There are low maintenance gardens to three sides of the property which are mainly laid to patio and gravel with mature planting. There is a communal green to the front of the property which residents are

welcome to use and plenty of nearby parking.

### **LOCATION**

Greenacres Park is a development for the over 45's which combines an enviable rural location with excellent road links to the nearby towns of Cirencester and Fairford.

### **VIEWING**

Viewing is available by appointment 7 days a week. Please call your local office to arrange.

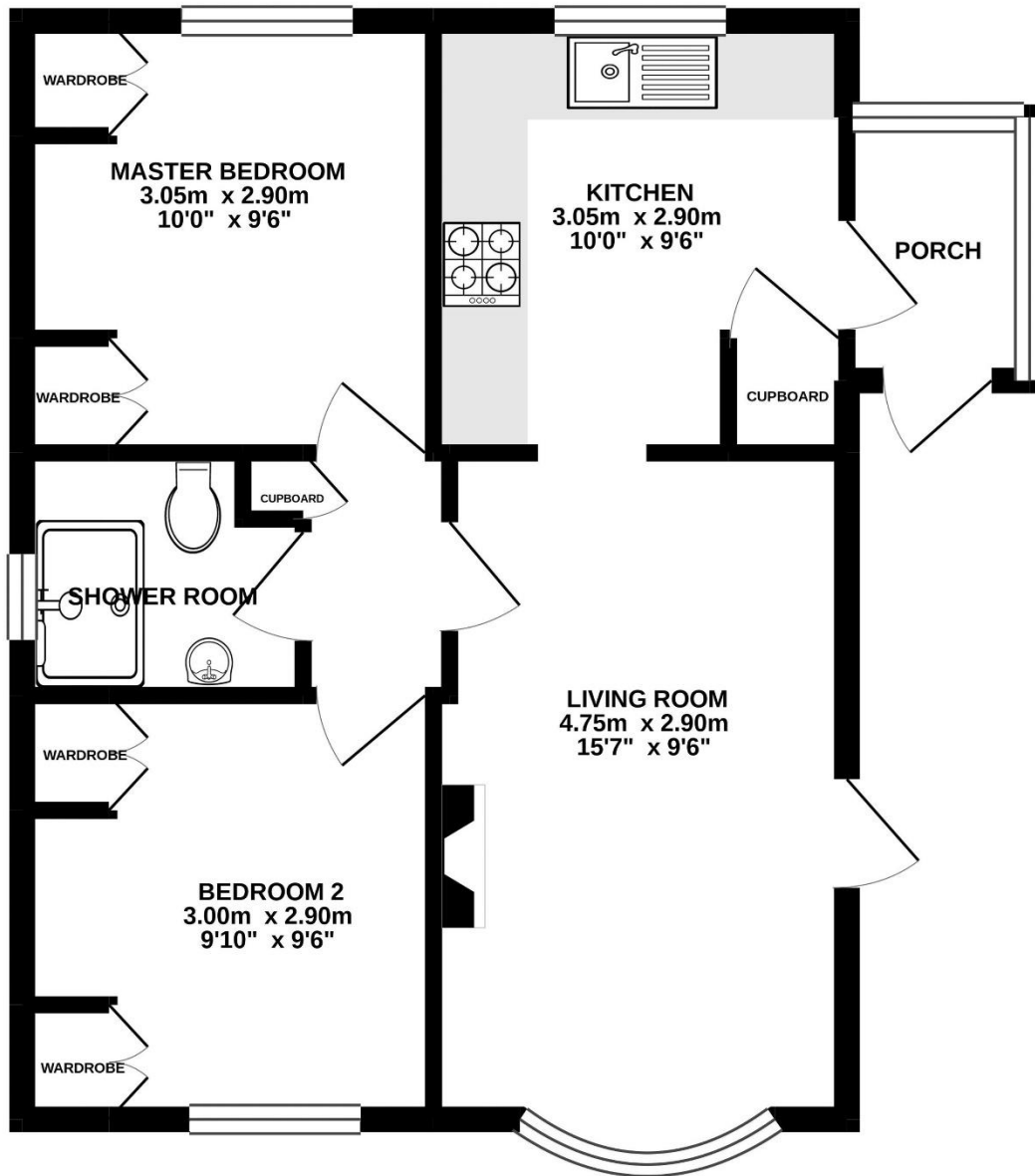
### **MORTGAGE**

We advise potential purchasers to speak to Financial Associates to discuss their financial requirements. Call us for further information.

### **AGENTS NOTE**

We wish to inform prospective purchasers that we have prepared these sales particulars as a general guide. We have not carried out a survey, nor have we tested any services, appliances or any specific fittings at the property. Room sizes should not be relied upon for carpets and furnishings.





Whilst every attempt has been made to ensure the accuracy of the floorplan contained here, measurements of doors, windows, rooms and any other items are approximate and no responsibility is taken for any error, omission or mis-statement. This plan is for illustrative purposes only and should be used as such by any prospective purchaser. The services, systems and appliances shown have not been tested and no guarantee as to their operability or efficiency can be given.  
Made with Metropix ©2020





