





Plot 3 Otters Walk, Cotswold Hoburne, Cirencester, Gloucestershire.

DIRECTIONS

Please use the postcode GL7 5UQ or call the office at any time for detailed directions from your location.

SUMMARY

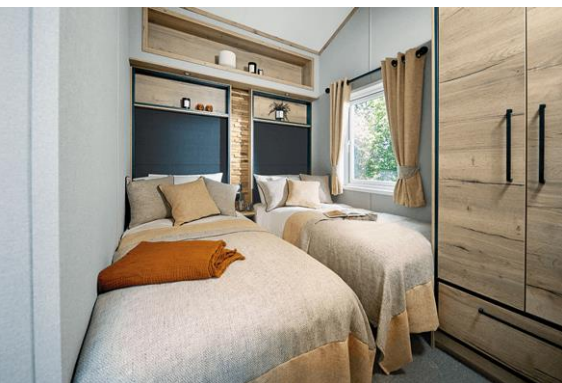
Brand new 'ABI Evadere' located on the exclusive Otters Walk development which forms part of the sought after Cotswold Hoburne holiday park. Style, substance, space, The Evadere's got it all. From striking wood feature walls to statement radiators, its design details break the mould. And with must-haves like a wine cooler and built-in wireless charging, it doesn't skip a beat on the features front either. The park itself has a range of leisure facilities onsite as well as being easily accessible to the remainder of this popular holiday destination.

PROPERTY

Style, substance, space, The Evadere's got it all. From striking wood feature walls to statement radiators, its design details break the mould. And with must-haves like a wine cooler and built-in wireless charging, it doesn't skip a beat on the features front either.

Further benefits include:

- Allocated parking space
- Built-in wardrobes
- Carpet underlay throughout
- Central heating
- Coffee table
- Double glazing
- Electric cooker with hob
- Electric fire
- En-suite from master bedroom
- Extractor hood
- Family bathroom
- Freestanding dining table and chairs
- Freestanding sofas
- Integrated kitchen appliances
- Wine cooler



GARDENS

The property benefits from allocated parking spaces and fully installed decking. It also takes advantage of this luxurious development with plenty of communal gardens, as well as leisure amenities, to enjoy.

LOCATION

The property is located on the exclusive Cotswold Hoburne resort in the heart of the Cotswold Water Park. As well as well stocked fishing lakes, facilities include an impressive entertainment complex which include cafe, bar, and restaurant, indoor and outdoor heated pools, boating and fishing lakes, adventure golf, tennis court, multi-use games area, adventure playground, amusement arcade, shop, and much more! It is located on the edge of South Cerney which is an attractive village with a further shops and popular pubs and is within easy reach of the many beautiful walks and leisure facilities that the Cotswold Water Park has to offer.

VIEWING

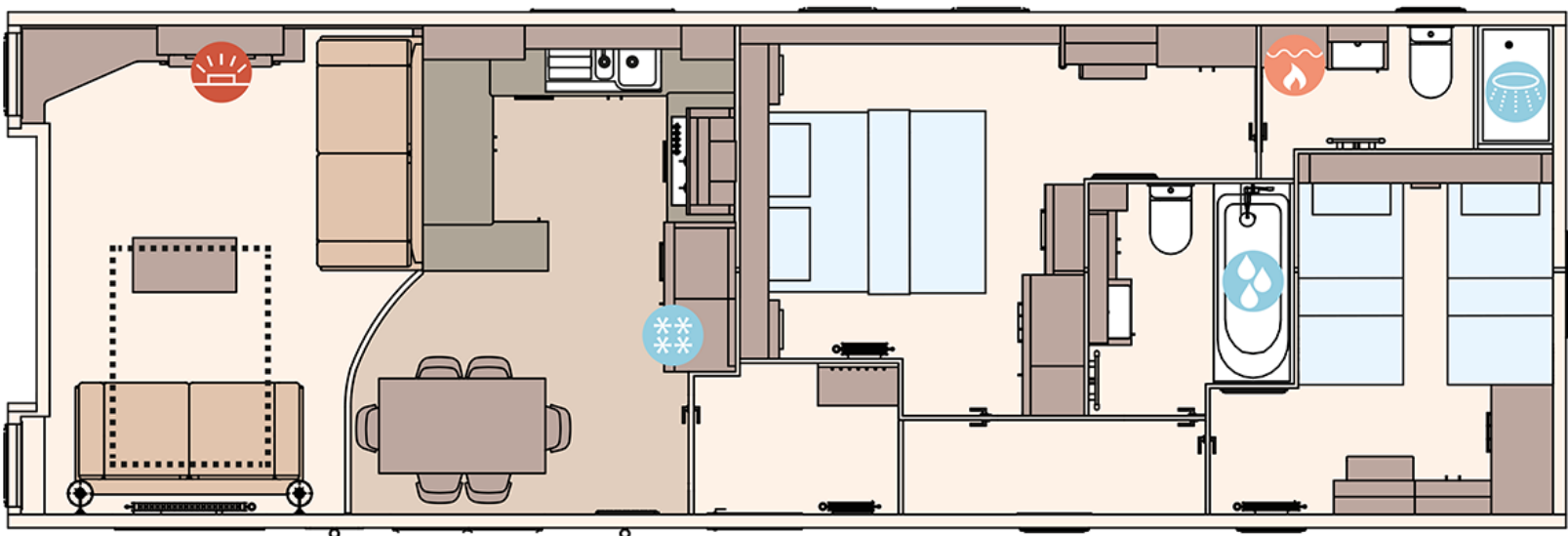
Viewing is available by appointment 7 days a week. Please call your local office to arrange.

MORTGAGE

We advise potential purchasers to speak to Financial Associates to discuss their financial requirements. Call us for further information.

AGENTS NOTE

We wish to inform prospective purchasers that we have prepared these sales particulars as a general guide. We have not carried out a survey, nor have we tested any services, appliances or any specific fittings at the property. Room sizes should not be relied upon for carpets and furnishings.



01285 641839
cirencester@cbslade.co.uk

01793 752382
cricklade@cbslade.co.uk

www.cbslade.co.uk

