



## Plot 10 Otters Walk, Cotswold Hoburne, Cirencester, Gloucestershire.

### DIRECTIONS

Please use the postcode GL7 5UQ or call the office at any time for detailed directions from your location.

### SUMMARY

Brand new 'Victory Faraday' located on the exclusive Otters Walk development which forms part of the sought after Cotswold Hoburne holiday park. The Faraday is the epitome of hygge (pronounced hoo-guh) which is Danish for 'mood of cosiness and comfort and feelings of wellness and contentment'. The Faraday is a home that'll make you the envy of your neighbours.. The park itself has a range of leisure facilities onsite as well as being easily accessible to the remainder of this popular holiday destination.

### PROPERTY

The Faraday is the epitome of hygge (pronounced hoo-guh) which is Danish for 'mood of cosiness and comfort and feelings of wellness and contentment'. The Faraday is a home that'll make you the envy of your neighbours..

Further benefits include:

Allocated parking space

Built-in wardrobes

Canexcel cladding

Coffee table

Curtains throughout

Double glazing

En-suite from master bedroom

Extractor hood

Family bathroom

Flat screen TV in lounge

Freestanding dining table and chairs

Freestanding sofas

King size bed in master bedroom

Wine cooler

### GARDENS

The property benefits from allocated parking spaces and fully installed decking. It also takes advantage of this luxurious development with plenty of communal gardens, as well as leisure amenities, to enjoy.

### LOCATION

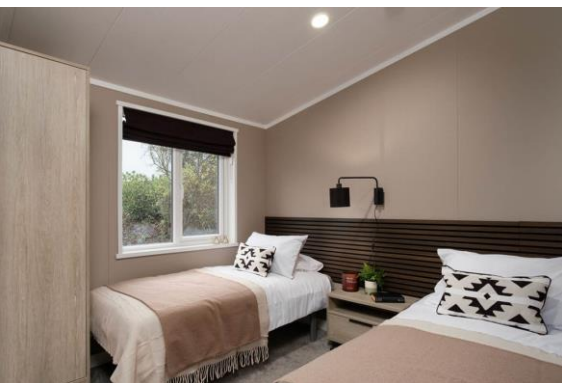
The property is located on the exclusive Cotswold Hoburne resort in the heart of the Cotswold Water Park. As well as well stocked fishing lakes, facilities include an impressive entertainment complex which include cafe, bar, and restaurant, indoor and outdoor heated pools, boating and fishing lakes, adventure golf, tennis court, multi-use games area, adventure playground, amusement arcade, shop, and much more! It is located on the edge of South Cerney which is an attractive village with a further shops and popular pubs and is within easy reach of the many beautiful walks and leisure facilities that the Cotswold Water Park has to offer.

### VIEWING

Viewing is available by appointment 7 days a week. Please call your local office to arrange.

### AGENTS NOTE

We wish to inform prospective purchasers that we have prepared these sales particulars as a general guide. We have not carried out a survey, nor have we tested any services, appliances or any specific fittings at the property. Room sizes should not be relied upon for carpets and furnishings.



01285 641839

cirencester@cbslade.co.uk

01793 752382

cricklade@cbslade.co.uk

[www.cbslade.co.uk](http://www.cbslade.co.uk)







