





14 Spring Meadow, Cotswold Hoburne, Cirencester, Gloucestershire.

DIRECTIONS

Please use the postcode GL7 5UQ or call the office at any time for detailed directions from your location.

SUMMARY

Beautifully presented, detached lodge, situated on the ever popular 'Meadows' development in this desirable holiday park. The property benefits from spacious, two bedroom accommodation combined with plentiful reception space, extended decking and parking for two cars. The development offers a range of leisure facilities including indoor and outdoor pools as well as dining options.



PROPERTY

This beautiful property is accessed via the entrance hall with storage for coats and shoes. To the right is a useful utility/cloakroom which provides a guest toilet as well as space for the washing machine. Turning to the left takes you into the open living space which comprises a large sitting area with patio doors out to the decking, a kitchen which is fitted with a range of storage and appliances, and a dining area as well. There is a partitioned off study area offering additional space as required. At the other end of the property are two large bedrooms which both benefit from built in wardrobes and ensembles.



GARDENS

The property benefits from an extended area of parking which allows parking for two cars at the property. There is an attractive area of southerly facing decking. It also takes advantage of this luxurious development with plenty of communal gardens, as well as leisure amenities, to enjoy.



LOCATION

The property is located on the exclusive Cotswold Hoburne resort in the heart of the Cotswold Water Park. Facilities include an impressive entertainment complex which include cafe, bar, and restaurant, indoor and outdoor heated pools, boating and fishing lakes, adventure golf, tennis court, multi-use games area, adventure playground, amusement arcade, shop, and much more! It is located on the edge of South Cerney which is an attractive village with a further shops and popular pubs and is within easy reach of the many beautiful walks and leisure facilities that the Cotswold Water Park has to offer.

VIEWING

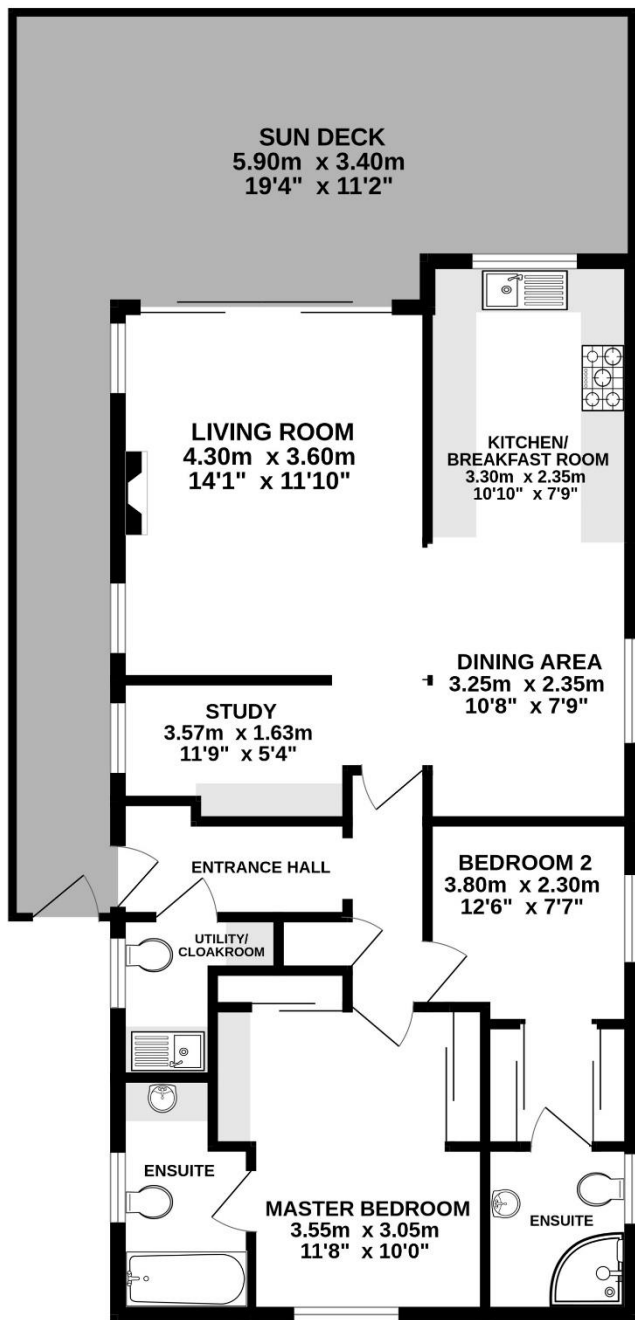
Viewing is available by appointment 7 days a week. Please call your local office to arrange.

MORTGAGE

We advise potential purchasers to speak to Financial Associates to discuss their financial requirements. Call us for further information.

AGENTS NOTE

We wish to inform prospective purchasers that we have prepared these sales particulars as a general guide. We have not carried out a survey, nor have we tested any services, appliances or any specific fittings at the property. Room sizes should not be relied upon for carpets and furnishings.



Whilst every attempt has been made to ensure the accuracy of the floorplan contained here, measurements of doors, windows, rooms and any other items are approximate and no responsibility is taken for any error, omission or mis-statement. This plan is for illustrative purposes only and should be used as such by any prospective purchaser. The services, systems and appliances shown have not been tested and no guarantee as to their operability or efficiency can be given.
Made with Metropix ©2023

