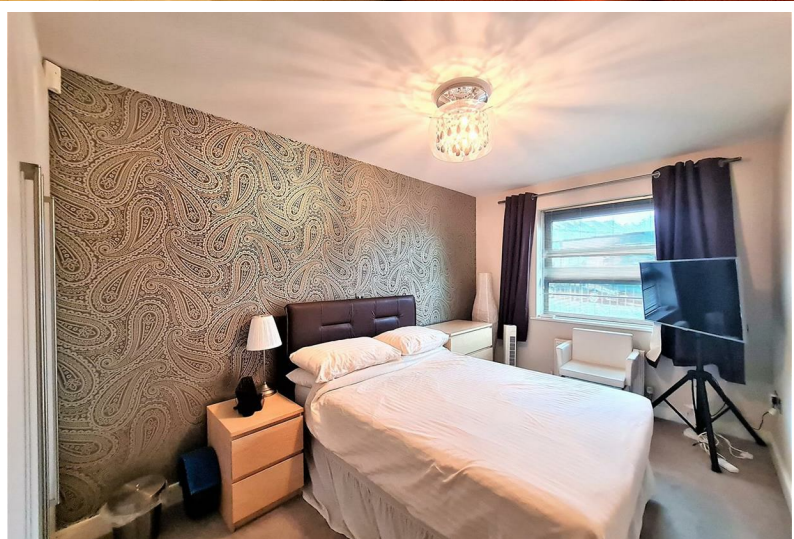


411 Battersea Park Road | London, SW11



£2,000 PCM

- Modern Apartment in Great Location • Two Double Bedrooms • Large Open Plan Reception and Kitchen • Ground Floor • Short Walk To Battersea Park • Close To Shops, Bars And Restaurants • Wandsworth Council Tax Band E • Good Transport Links • Part Furnished • Available August 8th

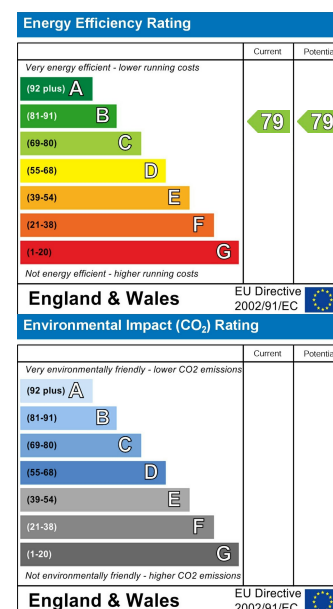
411 Battersea Park Road | London, SW11



Well presented modern flat with a large open plan reception room and kitchen with fully integrated SMEG appliances, two large double bedrooms (master with fitted wardrobes), modern bathroom with over bath shower and fitted storage cupboards in the hallway.

Located on Battersea Park Road just moments from Battersea Park the development benefits from good choice of shops, bars and restaurants, as well as a range of Transport links with a network of Local buses and train/underground stations including Battersea Park (5 minutes to Victoria), Queenstown Road (10 minutes to Waterloo) and Battersea Power Station (Northern Line) all within walking distance.

Perfect for a couple or two professional sharers. Wandsworth Council tax band E. Part-Furnished. available 8th August 2025.



These particulars are designed to provide a guideline only and cannot be relied upon as a statement of fact. The description represents the opinion of the author and is not intended to provide false or misleading information. Any prospective purchaser should make further checks on its accuracy. All measurements are approximate and floorplans are for representation only.



Eden Harper
64 Battersea Park Road, London, SW11 4JP
0207 720 1116
info@edenharper.com
www.edenharper.com