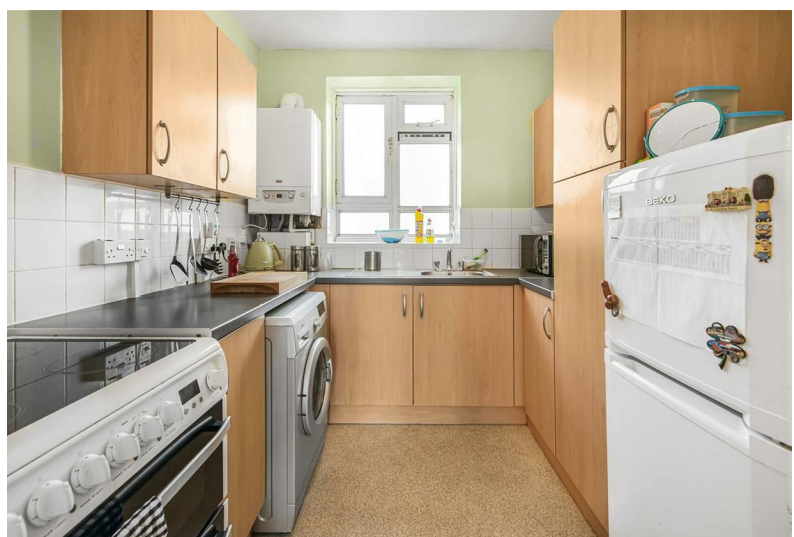


Strasburg Road | London, SW11



£310,000
Leasehold

- Top Floor One Bedroom Flat • 115 Years Lease • Private South Facing Balcony • Good Size Reception Room • Separate Kitchen • Top Floor - Lift Access • Wandsworth Council Tax Band B • Great Transport Links To Central London and the Surrounding Boroughs • Close to Battersea Park • Ideal First Time Buy

Strasburg Road | London, SW11

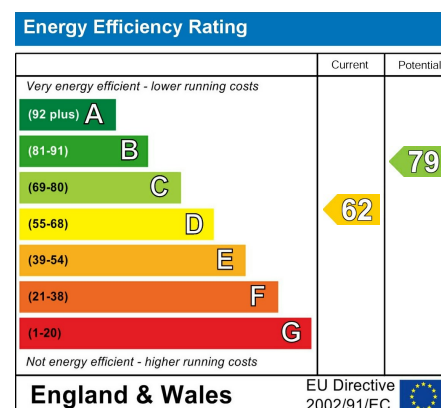
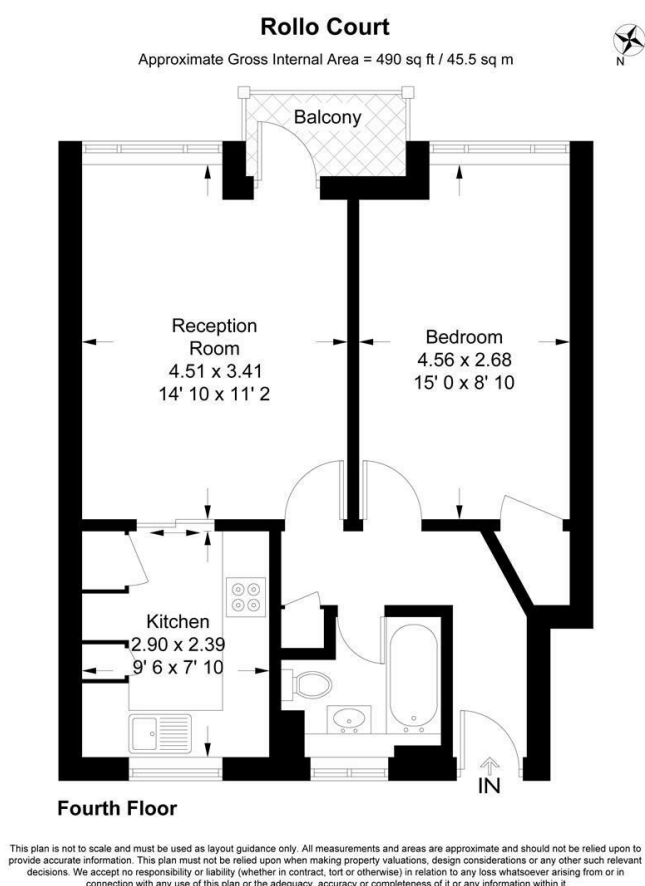


Lovely 4th floor 1 bedroom flat with 115 years lease. The accommodation has masses of natural light and comprises good sized reception room, separate kitchen, double bedroom with fitted storage and bathroom with shower over bath. A private south facing balcony is accessible from the reception room and overlooks the grass area behind the building.

Forming part of a well-maintained low-rise brick building with lift access which has just been renovated and residential parking permits can be applied for from Wandsworth Council.

The location benefits from superb transport links with both Queenstown Road and Battersea Park Stations within 5 minutes' walk (10 minutes to Waterloo and 5 minutes to Victoria) as well as the new Northern Line Tube Stop at Battersea Power Station. There are good bus routes into the West End, Westminster and the City. Just a few minutes walk from the wide open spaces of Battersea Park and also well placed for Chelsea Bridge.

Ideal First Time Buy or Letting Investment. EPC rating D. Wandsworth Council Tax band B. Lease has 115 years unexpired. Service Charge £1,100-£1,200 per annum.



These particulars are designed to provide a guideline only and cannot be relied upon as a statement of fact. The description represents the opinion of the author and is not intended to provide false or misleading information. Any prospective purchaser should make further checks on its accuracy. All measurements are approximate and floorplans are for representation only.



Eden Harper
64 Battersea Park Road, London, SW11 4JP
0207 720 1116
info@edenharper.com
www.edenharper.com