

4 Riverlight Quay | London, SW11



£4,500 Per Month

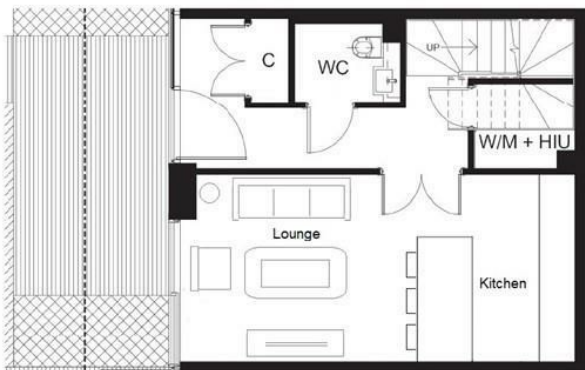
4 Riverlight Quay | London, SW11

Stunning ground floor, split level apartment with two bedrooms, one with adjoining office. Reception area includes fully fitted kitchen and breakfast bar, patio doors leading onto a front terrace. 2 bathrooms with separate W.C on the ground floor.

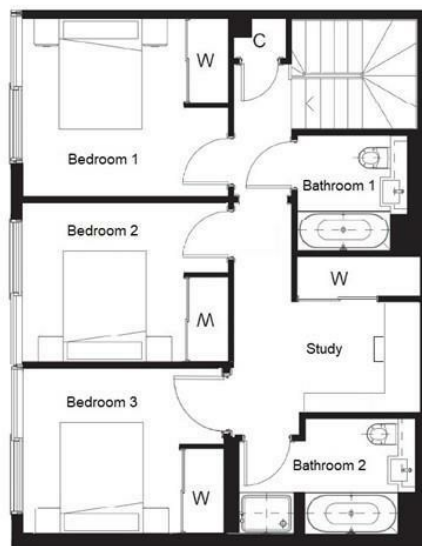
Residents of Riverlight Quay benefit from the residents exclusive clubhouse, a sunlit atrium swimming pool and holistic spa, a gymnasium, residents reception lounge and library, virtual golf, private film screening room, digital games room, and 24 hour concierge service.

Riverlight Quay sits 0.3 miles from Battersea Power Station, allowing easy access to Northern Line underground services. Battersea Power Station has a wealth of riverside bars, restaurants and coffee shops to enjoy, as well as the newly opened shopping centre.

DUPLEX 9 . RIVERLIGHT FOUR . SW8 SDG



1 Duplex Type C03b - Ground Floor
1 : 50



2 Duplex Type C03b - Mezzanine
1 : 50

Energy Efficiency Rating		Current	Potential
Very energy efficient - lower running costs			
(92 plus) A			
(81-91) B			
(69-80) C			
(55-68) D			
(39-54) E			
(21-38) F			
(1-20) G			
Not energy efficient - higher running costs			
England & Wales		EU Directive 2002/91/EC	
Environmental Impact (CO ₂) Rating		Current	Potential
Very environmentally friendly - lower CO ₂ emissions			
(92 plus) A			
(81-91) B			
(69-80) C			
(55-68) D			
(39-54) E			
(21-38) F			
(1-20) G			
Not environmentally friendly - higher CO ₂ emissions			
England & Wales		EU Directive 2002/91/EC	

These particulars are designed to provide a guideline only and cannot be relied upon as a statement of fact. The description represents the opinion of the author and is not intended to provide false or misleading information. Any prospective purchaser should make further checks on its accuracy. All measurements are approximate and floorplans are for representation only.